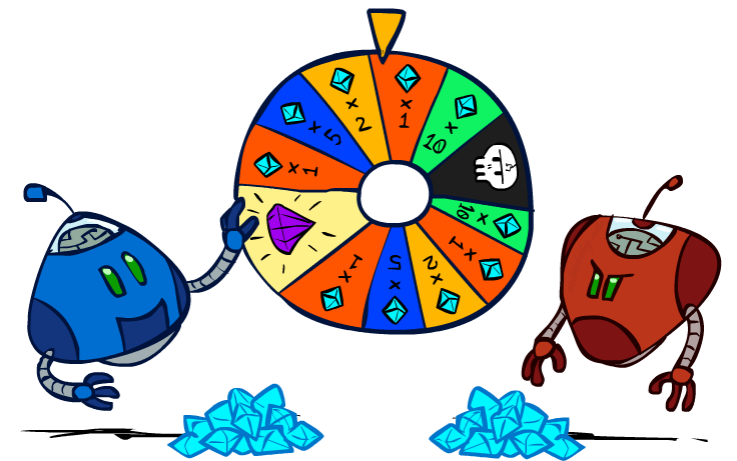


---

Hanna Hajishirzi  
Expectimax – Complex Games

CSE 573:  
Artificial Intelligence

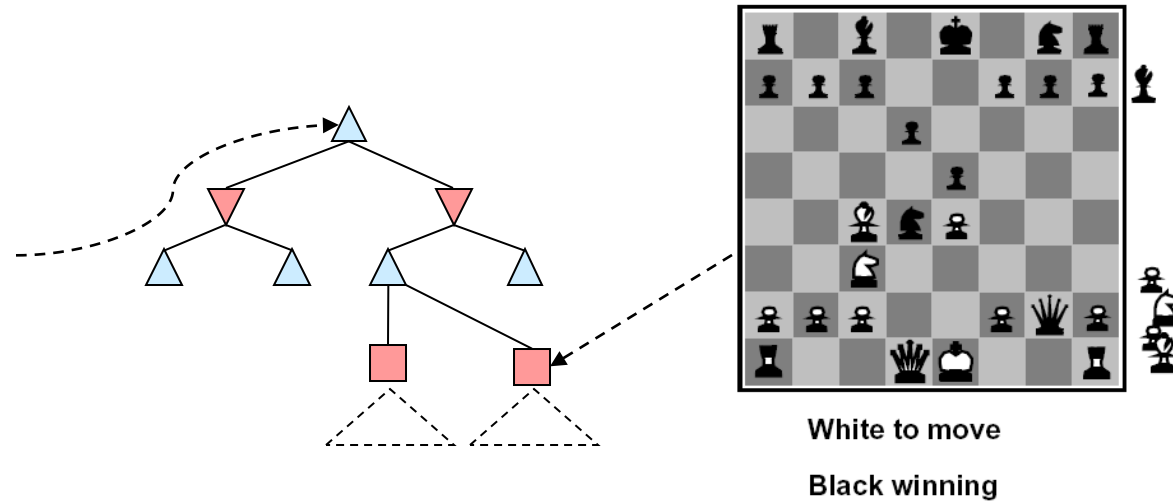
slides adapted from  
Dan Klein, Pieter Abbeel [ai.berkeley.edu](http://ai.berkeley.edu)  
And Dan Weld, Luke Zettlemoyer



# Recap: Adversarial Search

- Resource Limitation

- Alpha Beta Pruning
- Depth-limited Search
- Evaluation function



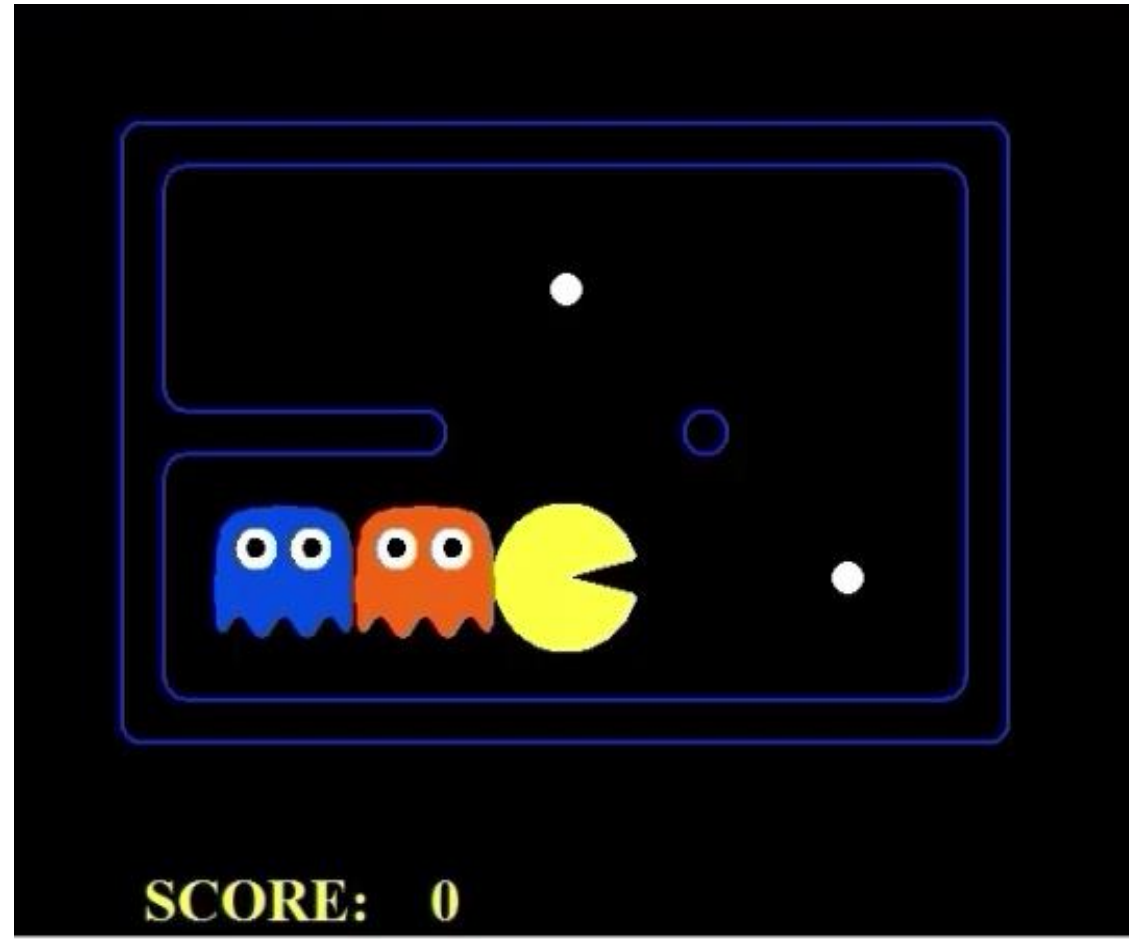
- Ideal function: returns the actual minimax value of the position
- In practice: typically weighted linear sum of features:

$$Eval(s) = w_1 f_1(s) + w_2 f_2(s) + \dots + w_n f_n(s)$$

- e.g.  $f_1(s) = (\text{num white queens} - \text{num black queens})$ , etc.

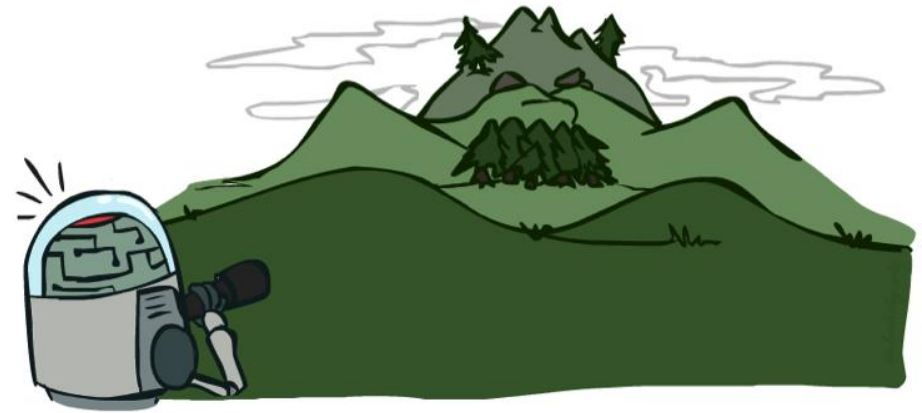
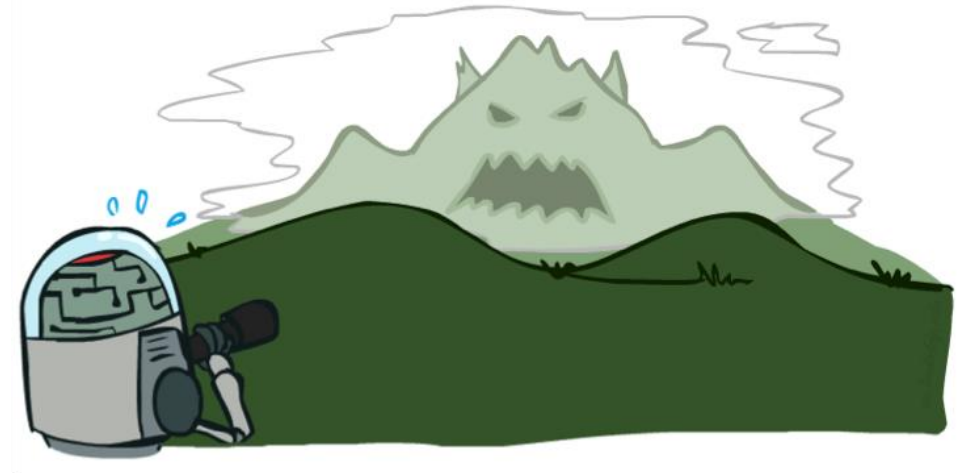
# Video of Demo Smart Ghosts (Coordination) – Zoomed In

---



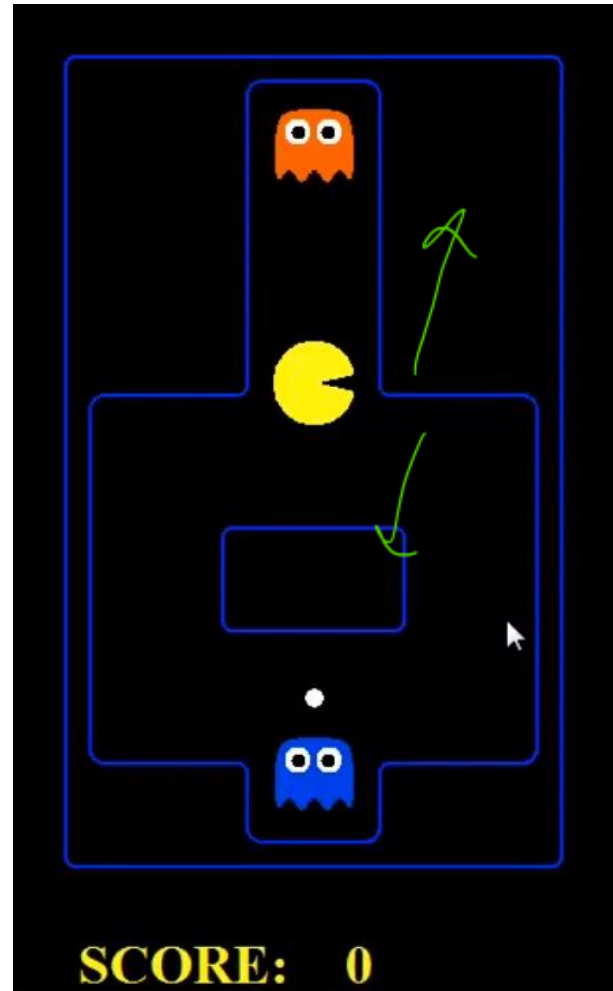
# Depth Matters

- Evaluation functions are always imperfect
- The deeper in the tree the evaluation function is buried, the less the quality of the evaluation function matters
- An important example of the tradeoff between complexity of features and complexity of computation



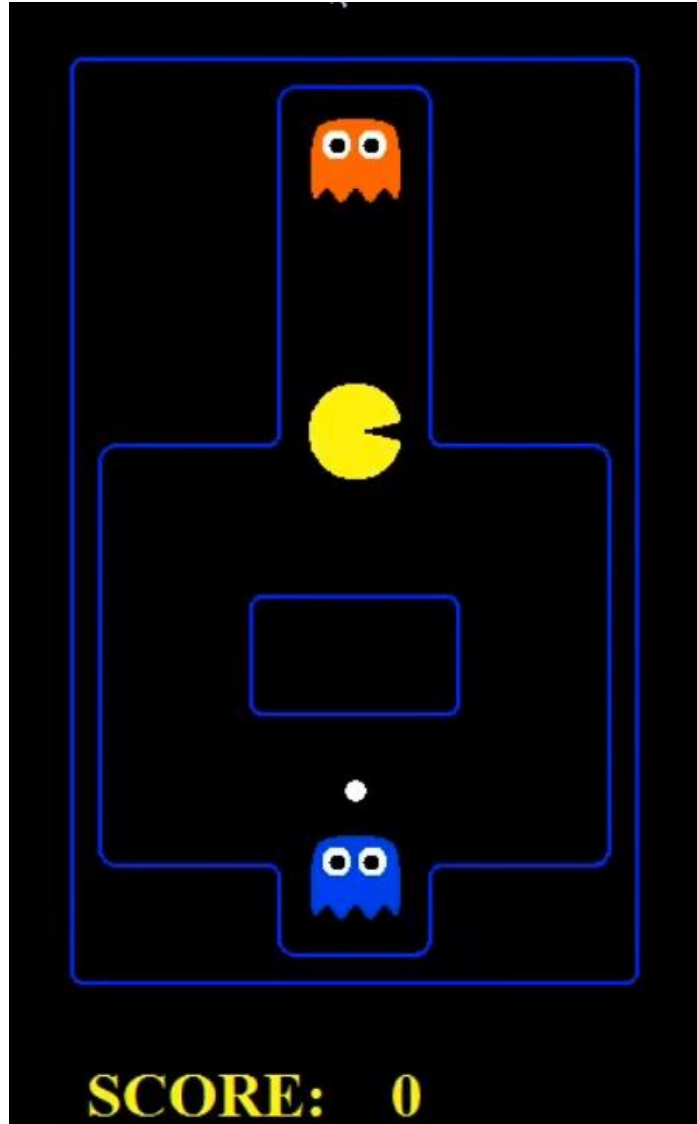
# Video of Demo Limited Depth (2)

---



# Video of Demo Limited Depth (10)

---



# Synergies between Alpha-Beta and Evaluation Function

---

- Alpha-Beta: amount of pruning depends on expansion ordering
  - Evaluation function can provide guidance to expand most promising nodes first
- Alpha-beta:
  - Value at a min-node will only keep going down
  - Once value of min-node lower than better option for max along path to root, can prune
  - Hence, IF evaluation function provides upper-bound on value at min-node, and upper-bound already lower than better option for max along path to root THEN can prune

# Where are we?

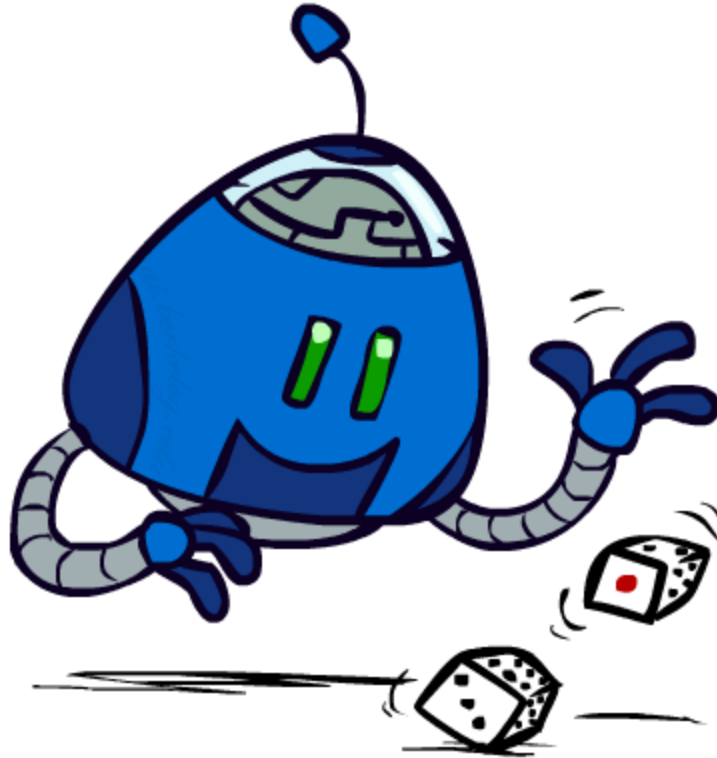
---

- Deterministic single agent environments
- Deterministic multi-agent environments
- Moving on -> Probabilistic environments

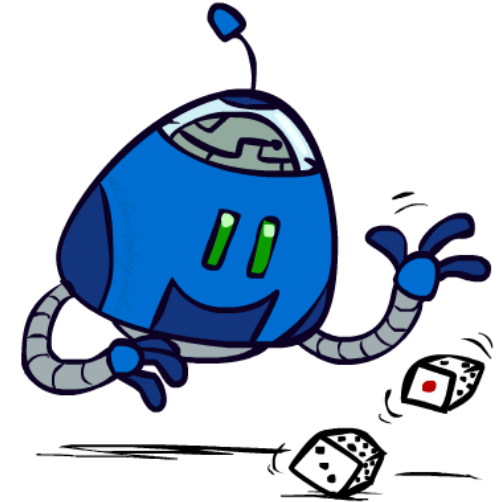
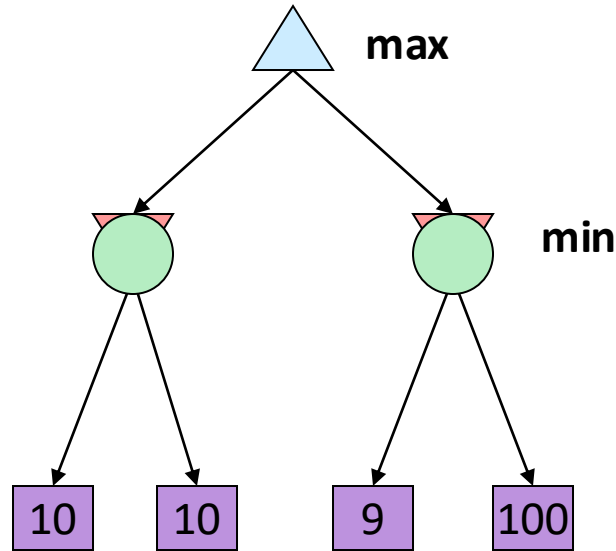
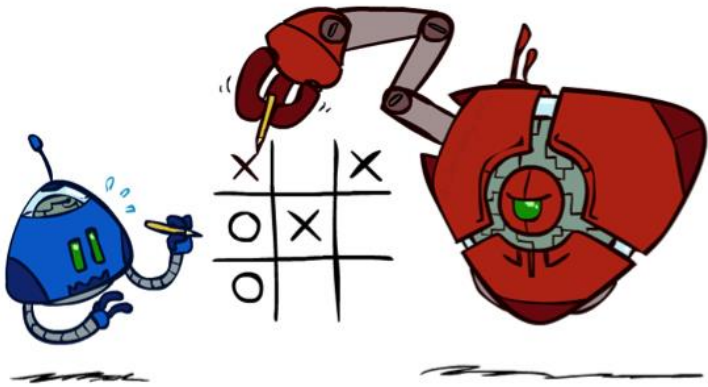


# Uncertain Outcomes

---



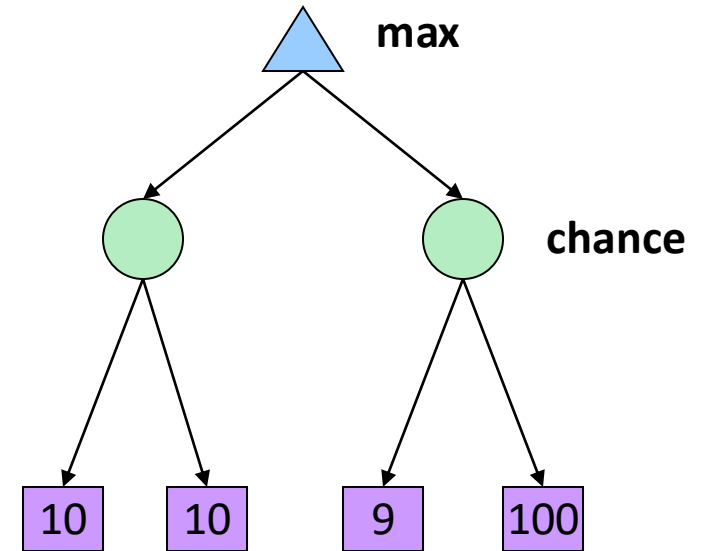
# Worst-Case vs. Average Case



Idea: Uncertain outcomes controlled by chance, not an adversary!

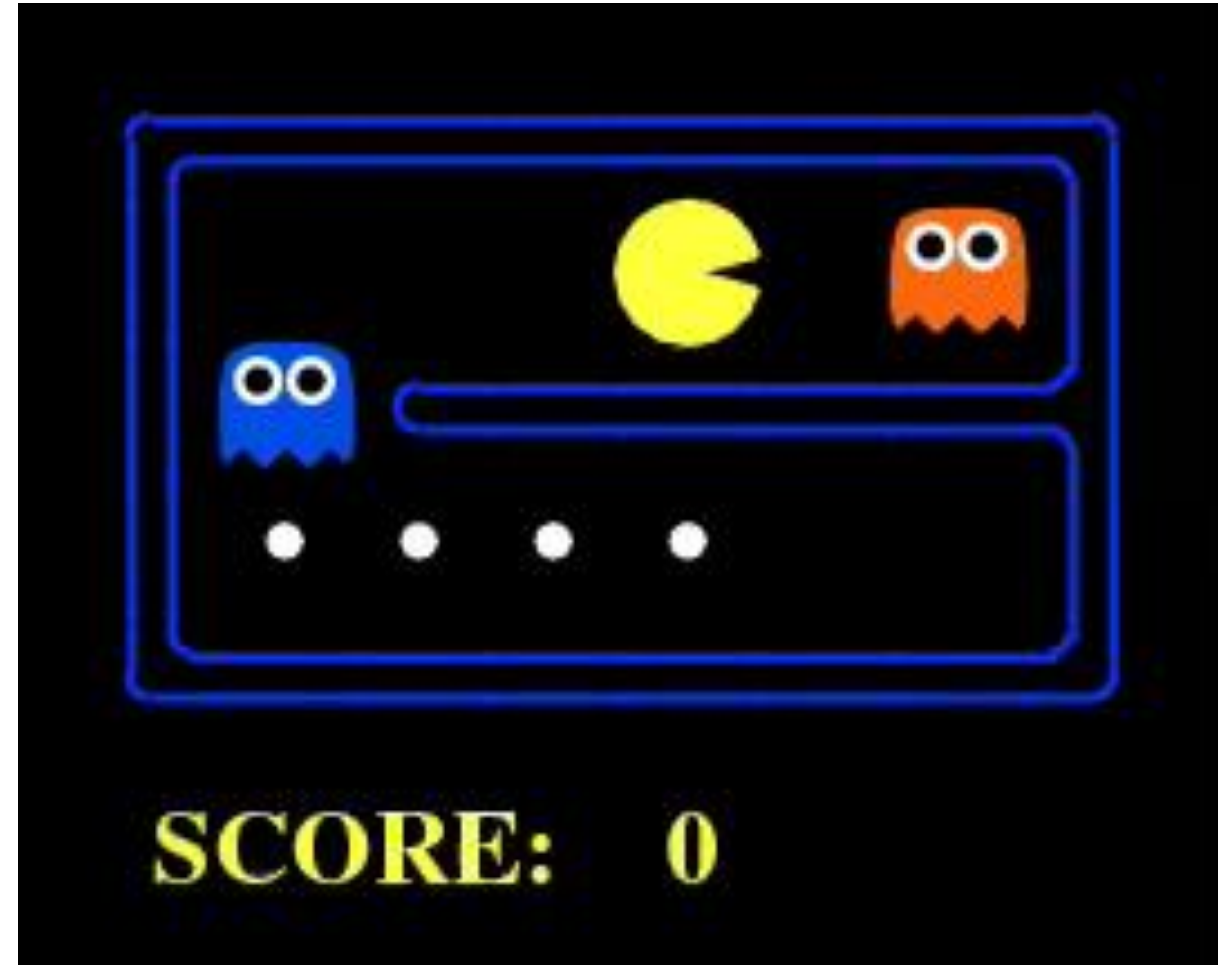
# Expectimax Search

- Why wouldn't we know what the result of an action will be?
  - Explicit randomness: rolling dice
  - Unpredictable opponents: the ghosts respond randomly
  - Unpredictable humans: humans are not perfect
  - Actions can fail: when moving a robot, wheels might slip
- Values should now reflect average-case (expectimax) outcomes, not worst-case (minimax) outcomes
- **Expectimax search**: compute the average score under optimal play
  - Max nodes as in minimax search
  - Chance nodes are like min nodes but the outcome is uncertain
  - Calculate their **expected utilities**
  - I.e. take weighted average (expectation) of children
- Later, we'll learn how to formalize the underlying uncertain-result problems as **Markov Decision Processes**



# Video of Demo Min vs. Exp (Min)

---



# Expectimax Pseudocode

---

```
def value(state):
```

```
    if the state is a terminal state: return the state's utility
```

```
    if the next agent is MAX: return max-value(state)
```

```
    if the next agent is EXP: return exp-value(state)
```

```
def max-value(state):
```

```
    initialize v =  $-\infty$ 
```

```
    for each successor of state:
```

```
        v = max(v, value(successor))
```

```
    return v
```

```
def exp-value(state):
```

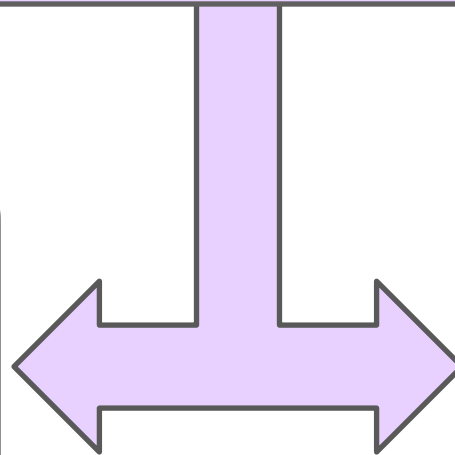
```
    initialize v = 0
```

```
    for each successor of state:
```

```
        p = probability(successor)
```

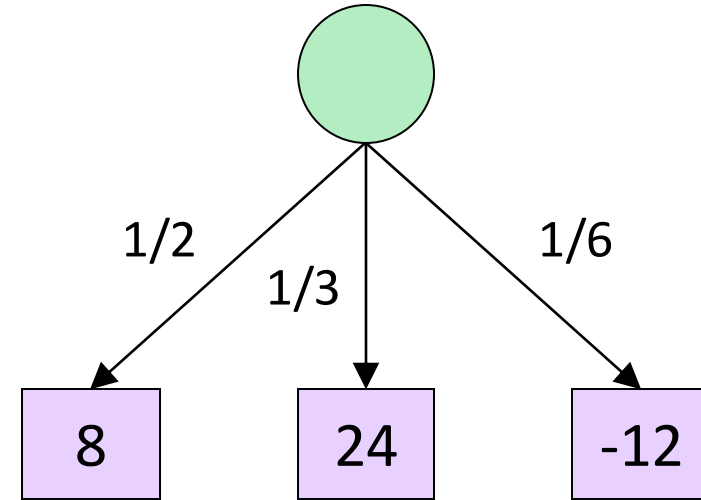
```
        v += p * value(successor)
```

```
    return v
```



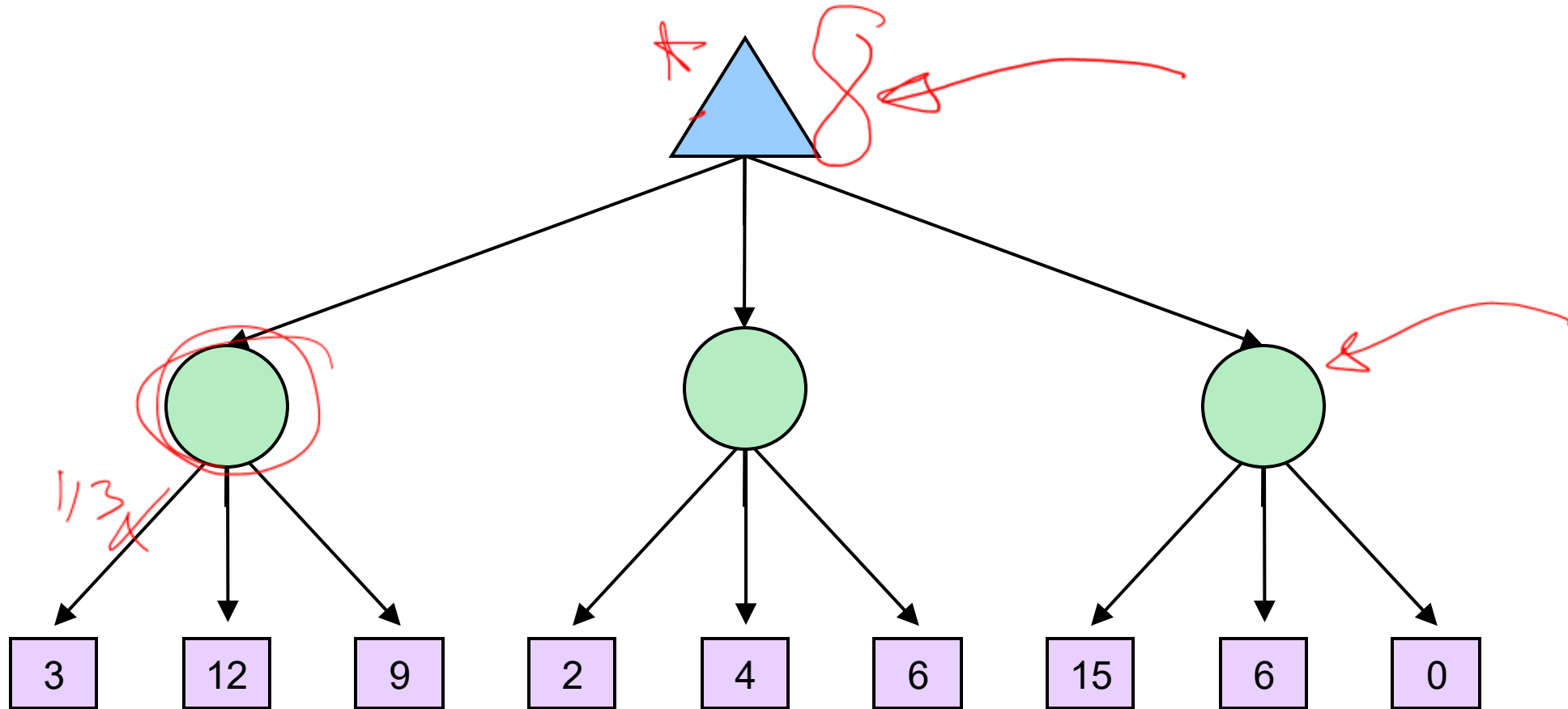
# Expectimax Pseudocode

```
def exp-value(state):  
    initialize v = 0  
    for each successor of state:  
        p = probability(successor)  
        v += p * value(successor)  
    return v
```

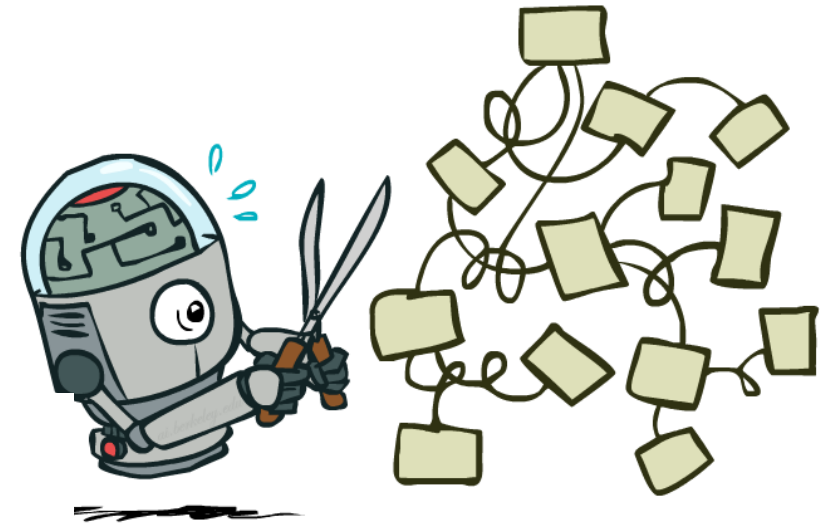
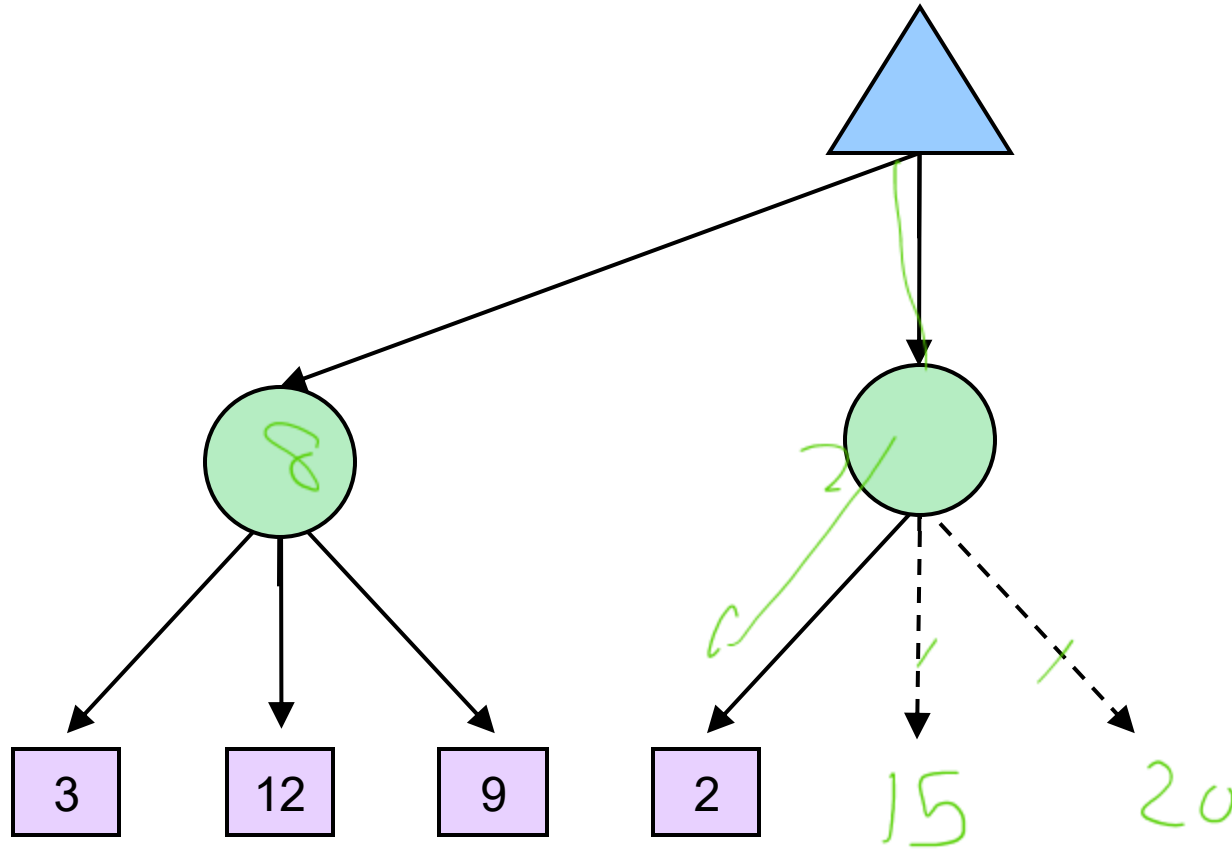


$$v = (1/2) (8) + (1/3) (24) + (1/6) (-12) = 10$$

# Expectimax Example

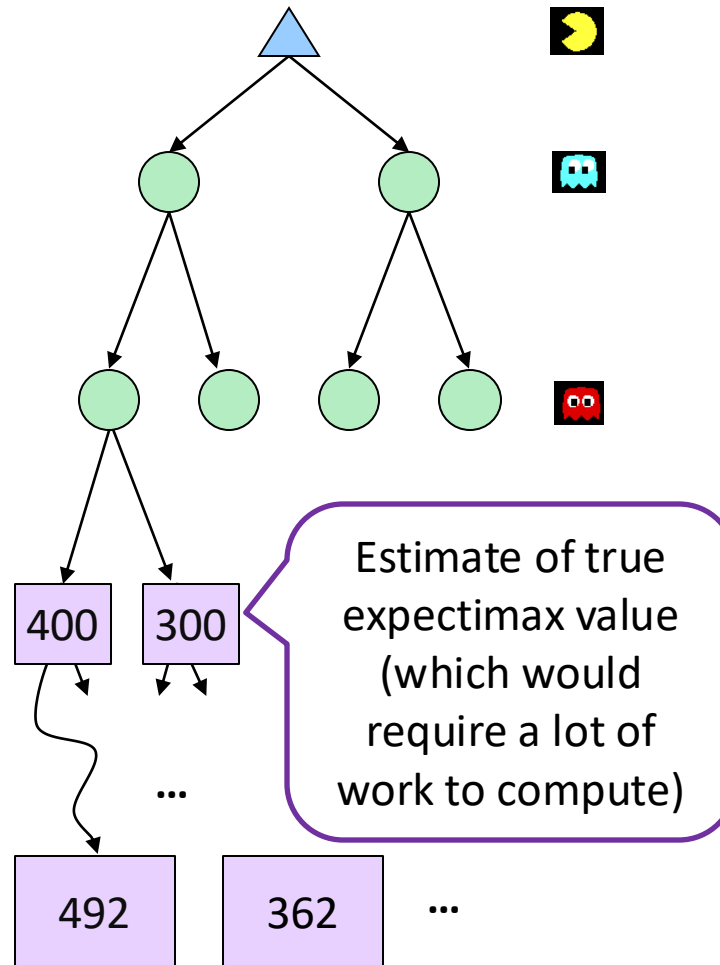


# Expectimax Pruning?



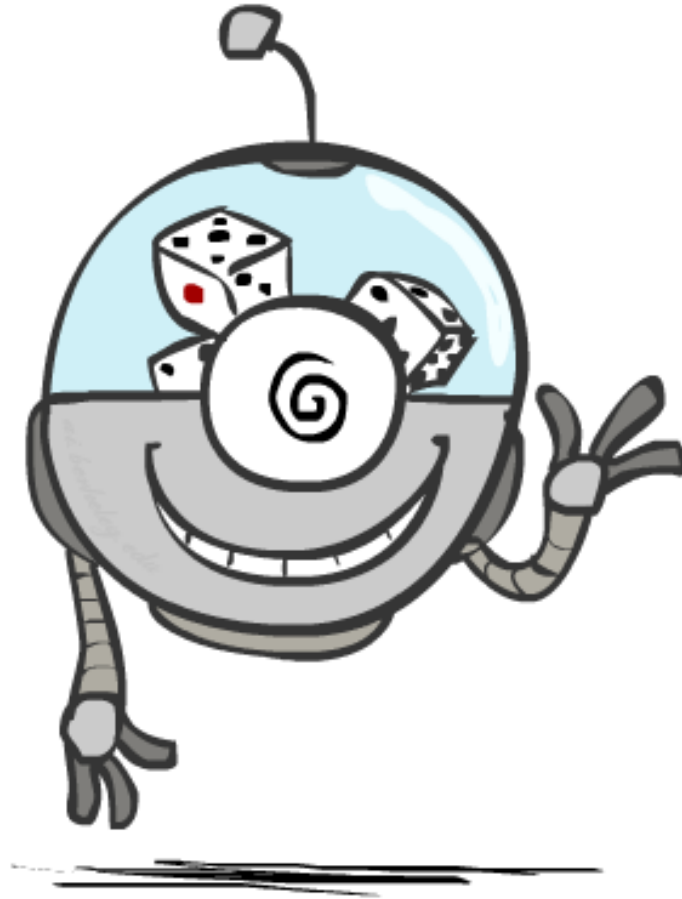


# Depth-Limited Expectimax



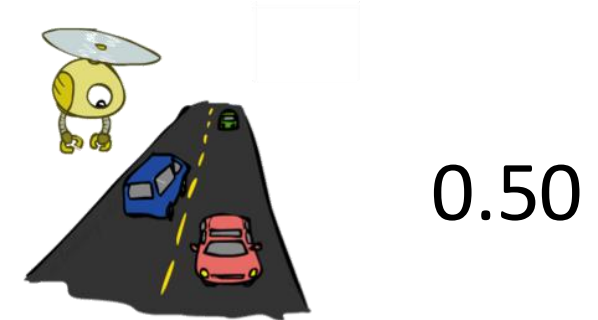
# Probabilities

---



# Reminder: Probabilities

- A **random variable** represents an event whose outcome is unknown
- A **probability distribution** is an assignment of weights to outcomes
- Example: Traffic on freeway
  - Random variable:  $T$  = whether there's traffic
  - Outcomes:  $T$  in {none, light, heavy}
  - Distribution:  $P(T=\text{none}) = 0.25$ ,  $P(T=\text{light}) = 0.50$ ,  $P(T=\text{heavy}) = 0.25$
- Some laws of probability (more later):
  - Probabilities are always non-negative
  - Probabilities over all possible outcomes sum to one
- As we get more evidence, probabilities may change:
  - $P(T=\text{heavy}) = 0.25$ ,  $P(T=\text{heavy} \mid \text{Hour}=8\text{am}) = 0.60$
  - We'll talk about methods for reasoning and updating probabilities later

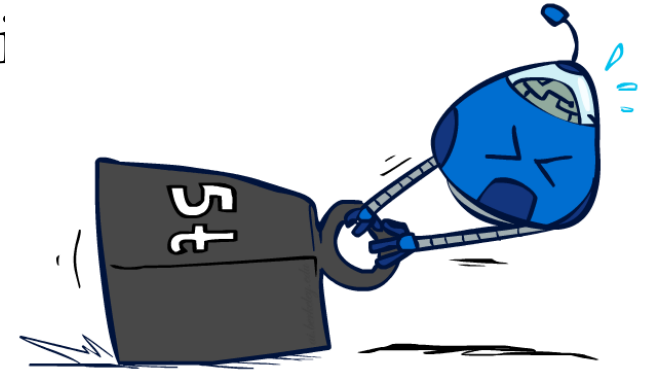
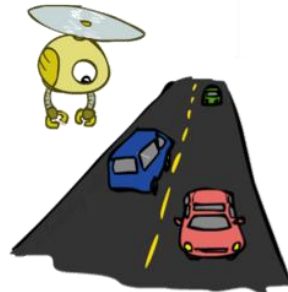
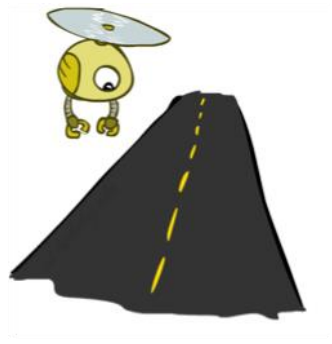


# Reminder: Expectations

- The expected value of a function of a random variable is the average, weighted by the probability distribution over outcomes
- Example: How long to get to the airport?

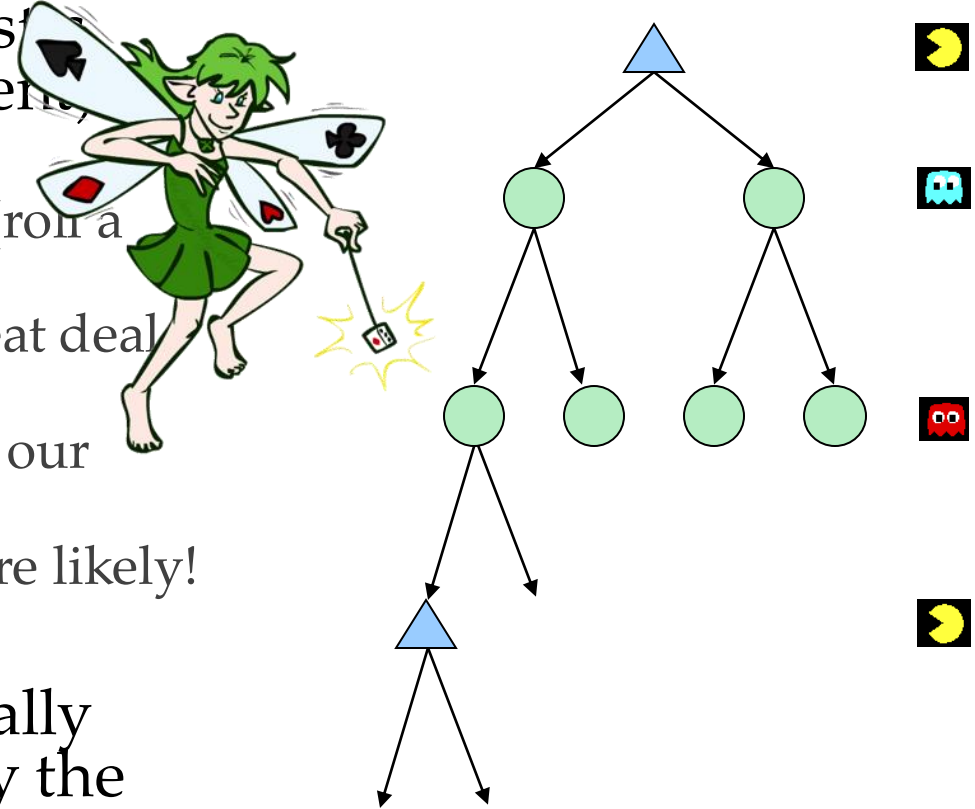
Time:	20 min		30 min		60 min
	x	+	x	+	x
Probability:	0.25		0.50		0.25

→ 35 min



# What Probabilities to Use?

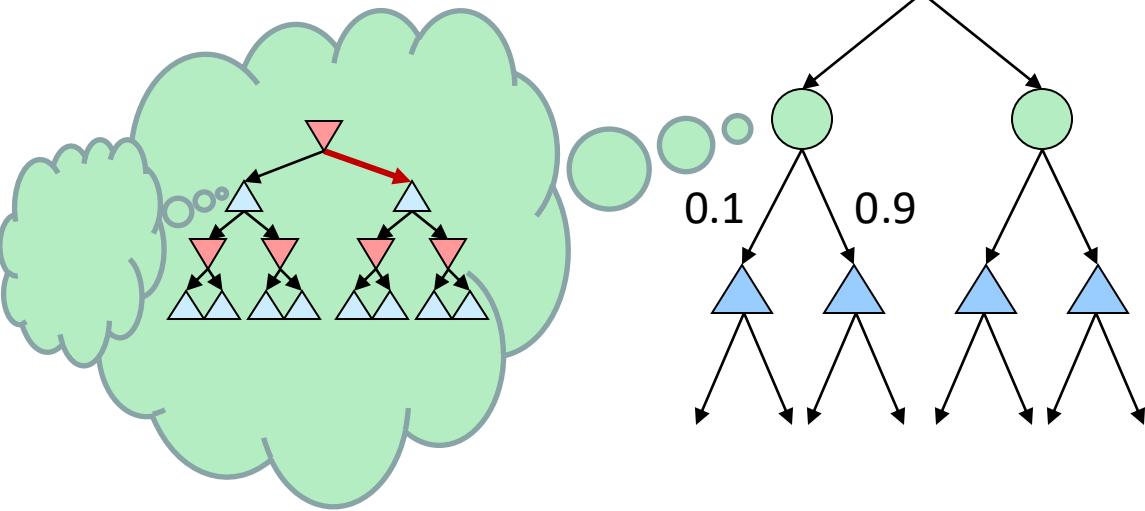
- In expectimax search, we have a probabilistic model of how the opponent (or environment) will behave in any state
  - Model could be a simple uniform distribution (roll a die)
  - Model could be sophisticated and require a great deal of computation
  - We have a chance node for any outcome out of our control: opponent or environment
  - The model might say that adversarial actions are likely!
- For now, assume each chance node magically comes along with probabilities that specify the distribution over its outcomes



*Having a probabilistic belief about another agent's action does not mean that the agent is flipping any coins!*

# Quiz: Informed Probabilities

- Let's say you know that your opponent is actually running a depth 2 minimax, using the result 80% of the time, and moving randomly otherwise
- Question: What tree search should you use?

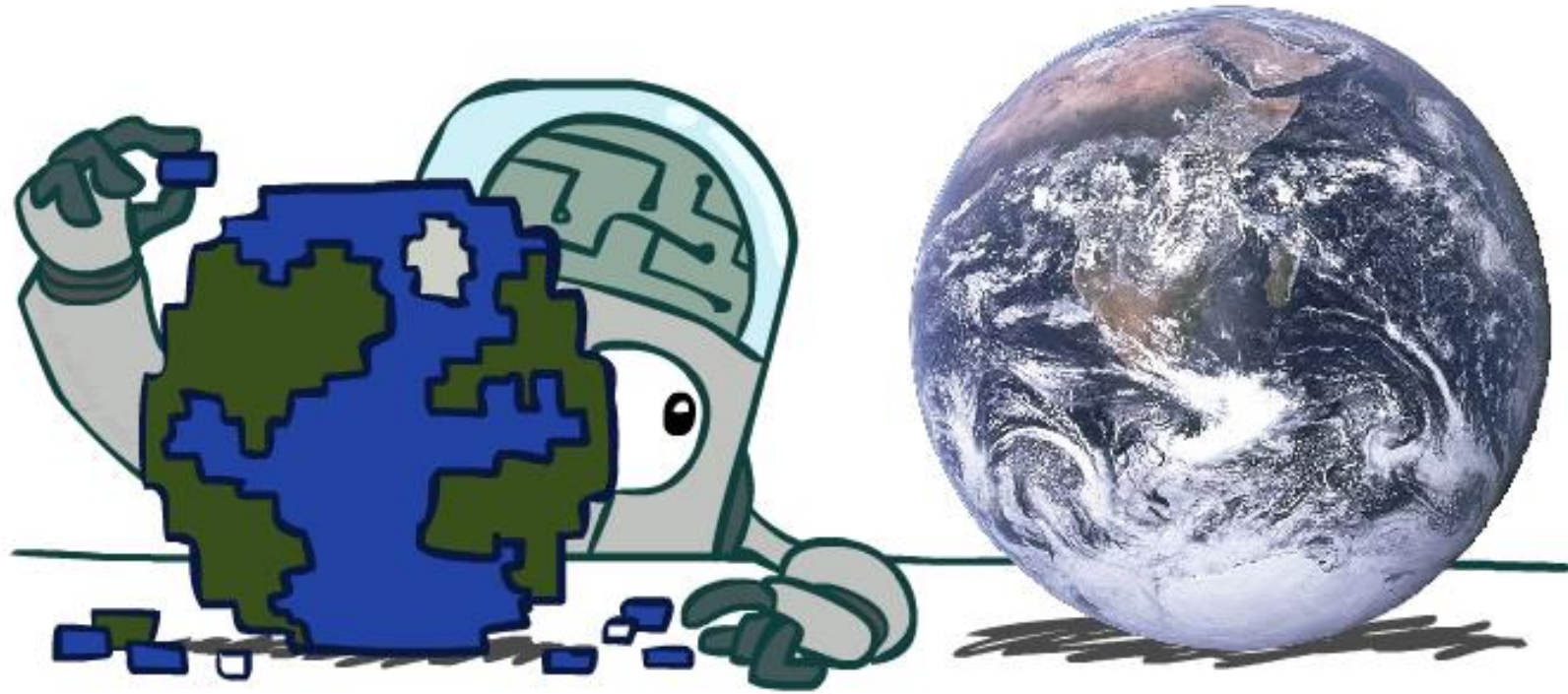


- **Answer: Expectimax!**

- To figure out EACH chance node's probabilities, you have to run a simulation of your opponent
- This kind of thing gets very slow very quickly
- Even worse if you have to simulate your opponent simulating you...
- ... except for minimax and maximax, which have the nice property that it all collapses into one game tree

# Modeling Assumptions

---





# The Dangers of Optimism and Pessimism

---

## Dangerous Optimism

Assuming chance when the world is adversarial



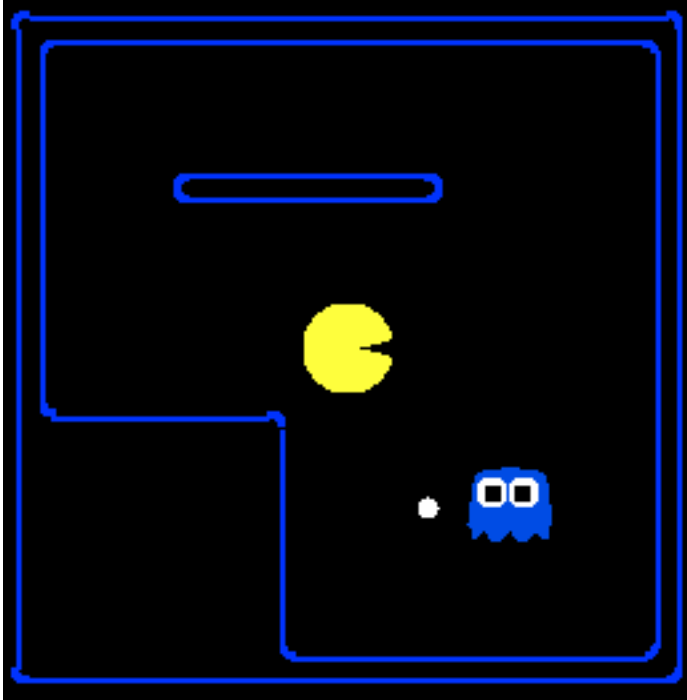
## Dangerous Pessimism

Assuming the worst case when it's not likely





# Assumptions vs. Reality



	Adversarial Ghost	Random Ghost
Minimax Pacman		
Expectimax Pacman		

Results from playing 5 games

Pacman used depth 4 search with an eval function that avoids trouble  
Ghost used depth 2 search with an eval function that seeks Pacman

# Video of Demo World Assumptions

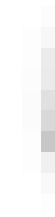
## Random Ghost – Expectimax Pacman

---

# Video of Demo World Assumptions

## Adversarial Ghost – Minimax Pacman

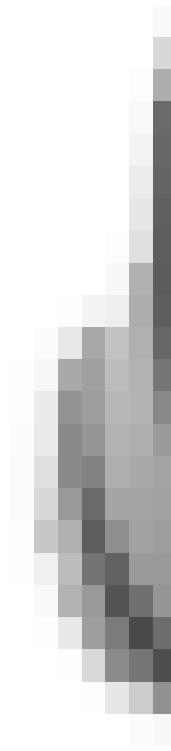
---



# Video of Demo World Assumptions

## Random Ghost – Minimax Pacman

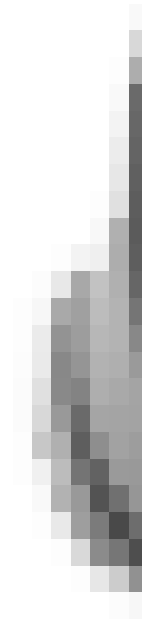
---



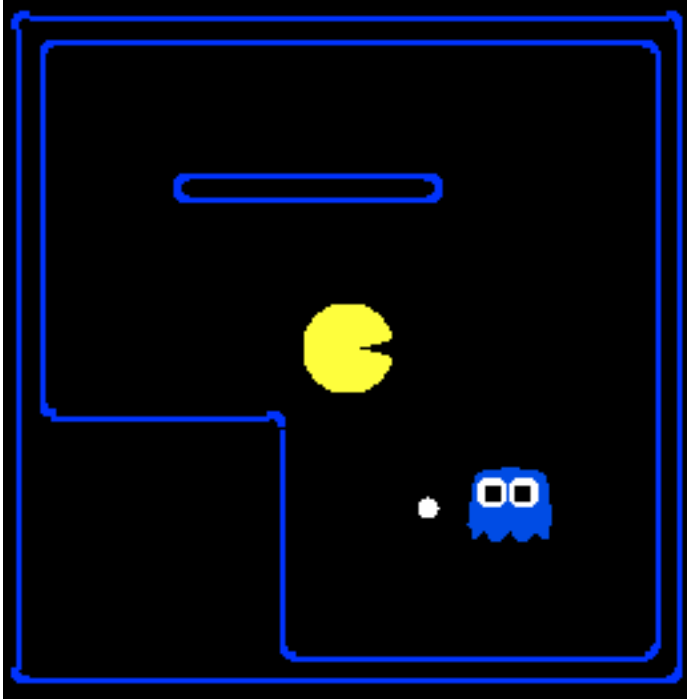
# Video of Demo World Assumptions

## Adversarial Ghost – Expectimax Pacman

---



# Assumptions vs. Reality



	Adversarial Ghost	Random Ghost
Minimax Pacman	Won 5/5 Avg. Score: 483	Won 5/5 Avg. Score: 493
Expectimax Pacman	Won 1/5 Avg. Score: -303	Won 5/5 Avg. Score: 503

Results from playing 5 games

Pacman used depth 4 search with an eval function that avoids trouble  
Ghost used depth 2 search with an eval function that seeks Pacman

# Why not minimax?

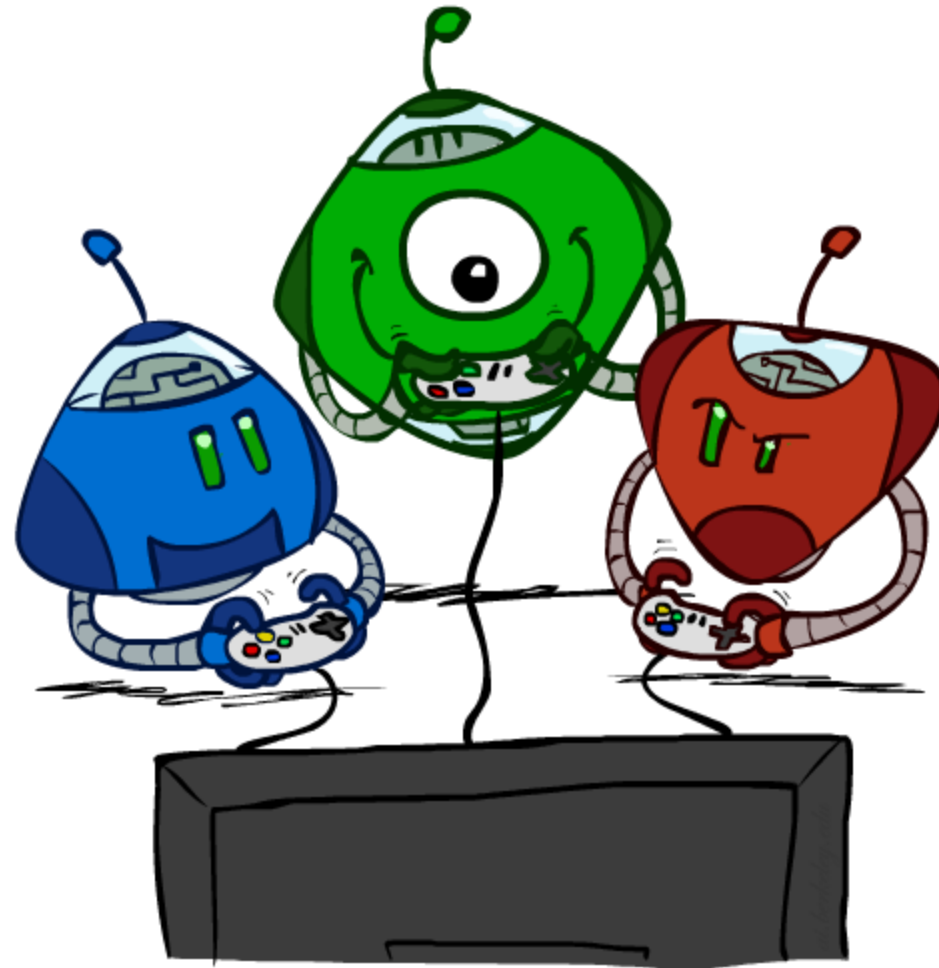
---

- Worst case reasoning is too conservative
- Need average case reasoning



# Other Game Types

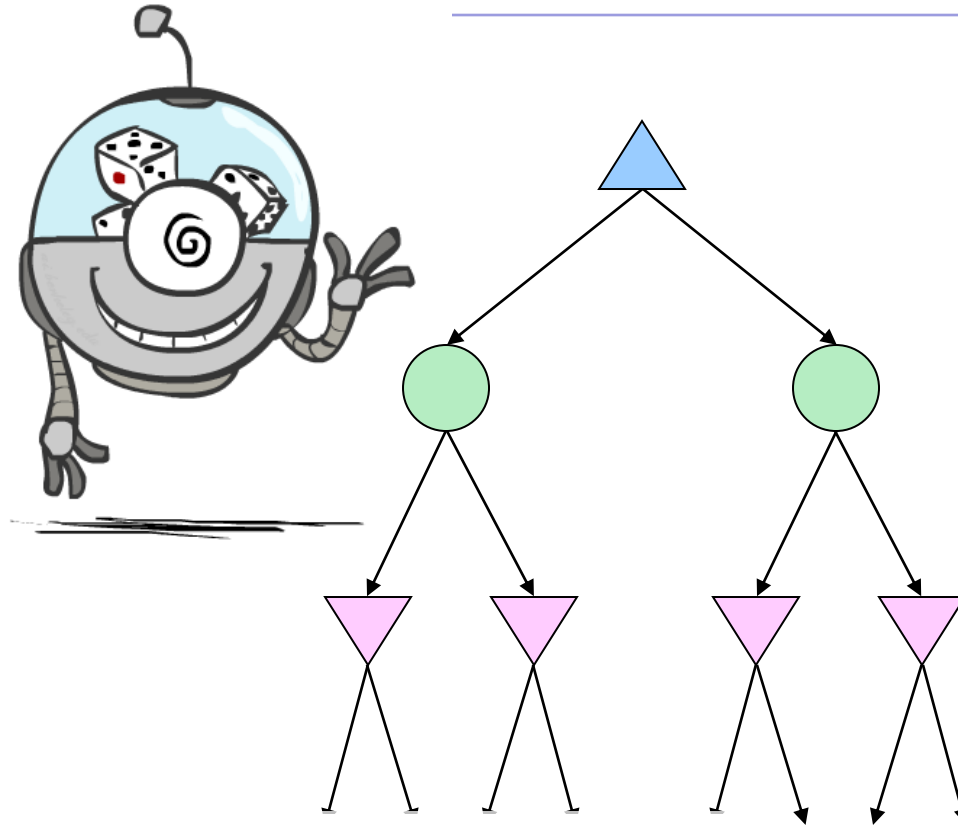
---





# Mixed Layer Types

- E.g. Backgammon
- Expecti-minimax
  - Environment is an extra “random agent” player that moves after each min/max agent
  - Each node computes the appropriate combination of its children



```
if state is a MAX node then
    return the highest EXPECTIMINIMAX-VALUE of SUCCESSORS(state)
if state is a MIN node then
    return the lowest EXPECTIMINIMAX-VALUE of SUCCESSORS(state)
if state is a chance node then
    return average of EXPECTIMINIMAX-VALUE of SUCCESSORS(state)
```

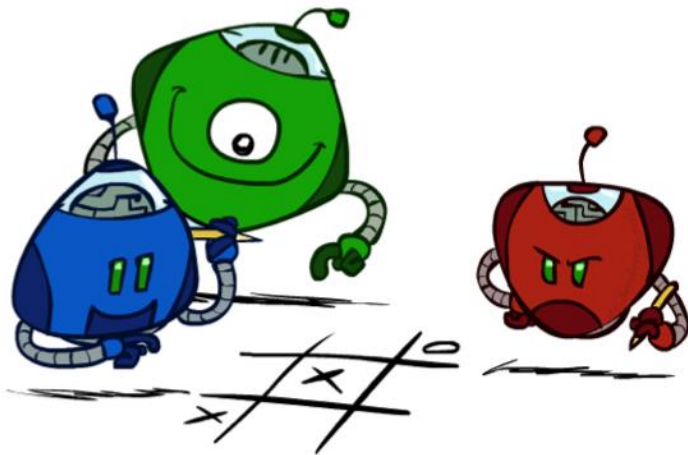
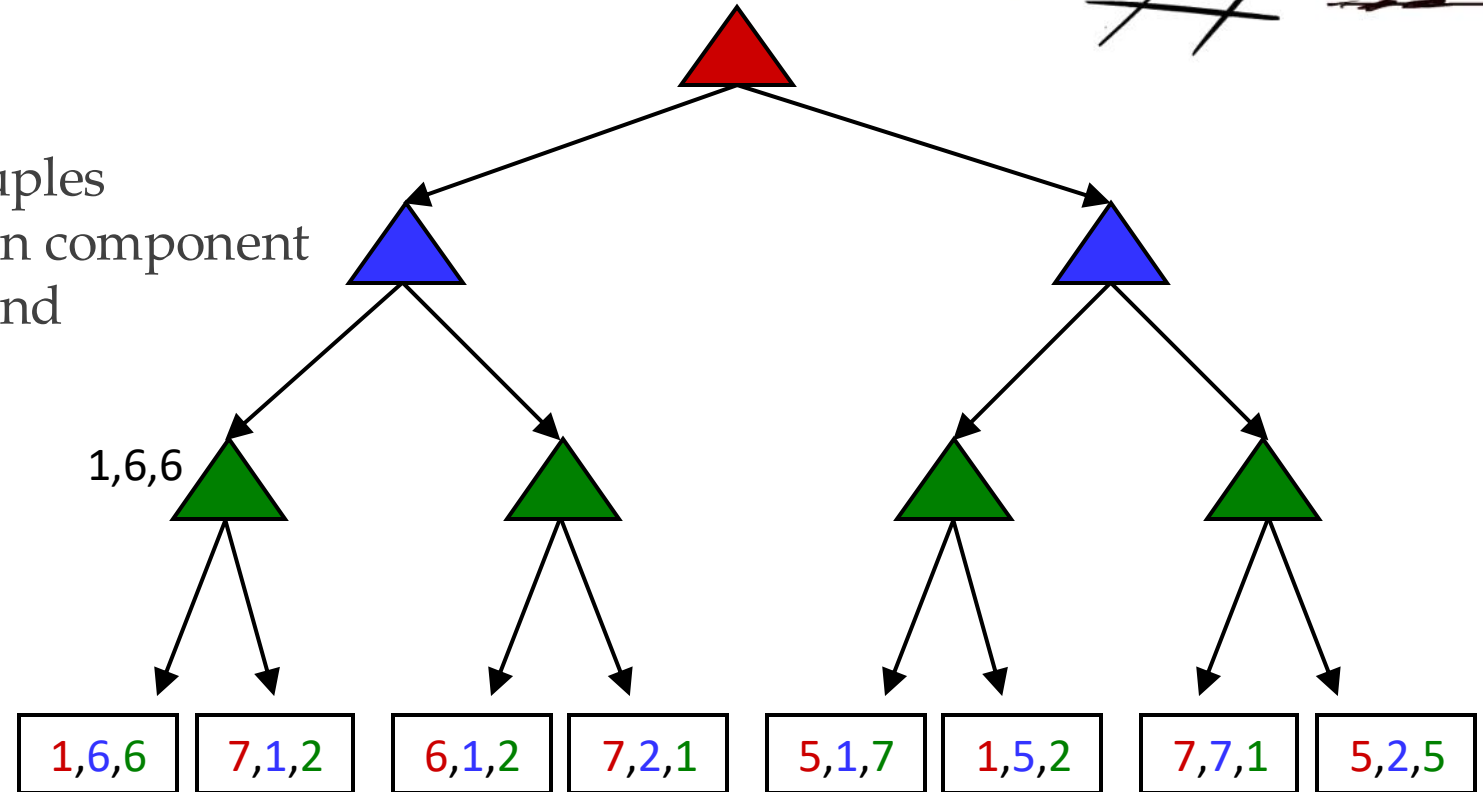
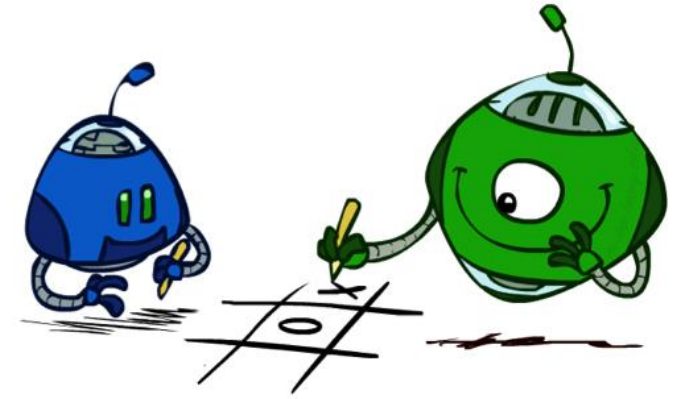
# Example: Backgammon

- Dice rolls increase  $b$ : 21 possible rolls with 2 dice
  - Backgammon  $\approx 20$  legal moves
  - $\text{Depth } 2 = 20 \times (21 \times 20)^3 = 1.2 \times 10^9$
- As depth increases, probability of reaching a given search node shrinks
  - So usefulness of search is diminished
  - So limiting depth is less damaging
  - But pruning is trickier...
- Historic AI: TDGammon uses depth-2 search + very good evaluation function + reinforcement learning:  
world-champion level play
- 1<sup>st</sup> AI world champion in any game!



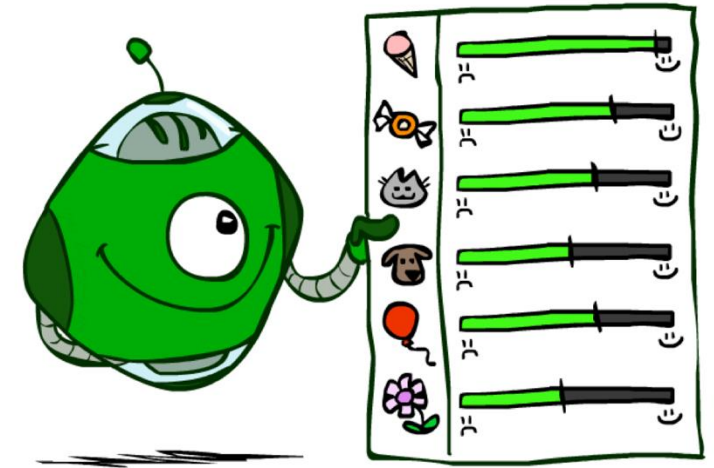
# Multi-Agent Utilities

- What if the game is not zero-sum, or has multiple players?
- Generalization of minimax:
  - Terminals have utility tuples
  - Node values are also utility tuples
  - Each player maximizes its own component
  - Can give rise to cooperation and competition dynamically...



# Utilities

- Utilities: values that we assign to every state
- Why should we average utilities? Why not minimax?
- Principle of maximum expected utility:
  - A rational agent should choose the action that **maximizes its expected utility, given its knowledge**



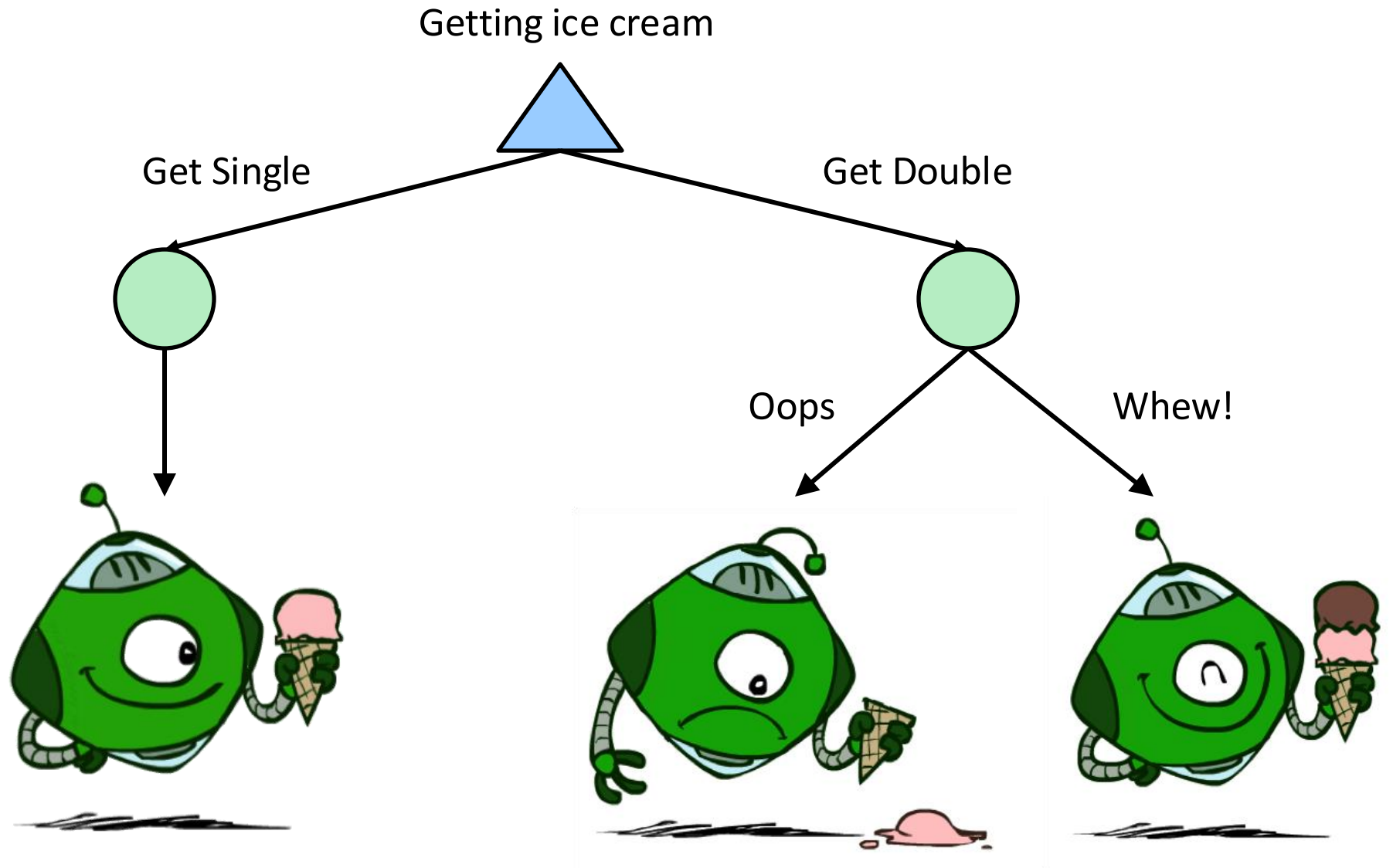
# Utilities

---

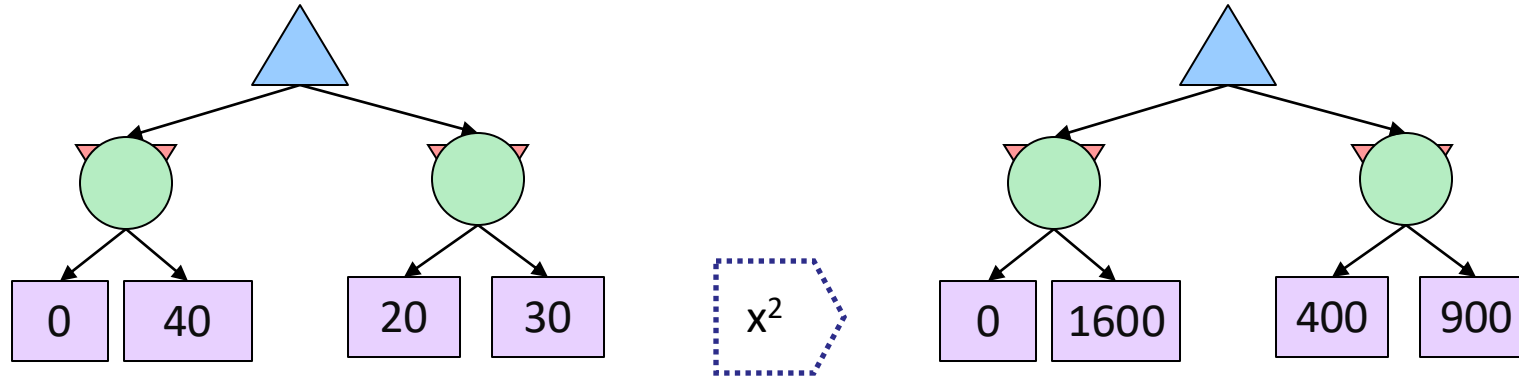
- Utilities are functions from outcomes (states of the world) to real numbers that describe an agent's preferences
- Where do utilities come from?
  - In a game, may be simple (+1/-1)
  - Utilities summarize the agent's goals
- We hard-wire utilities and let behaviors emerge



# Utilities: Uncertain Outcomes



# What Utilities to Use?



- For worst-case minimax reasoning, terminal function scale doesn't matter
  - We just want better states to have higher evaluations (get the ordering right)
  - We call this **insensitivity to monotonic transformations**
- For average-case expectimax reasoning, we need *magnitudes* to be meaningful

# Next Topic: MDPs!

---