

Welcome to

Cse490ra - Tablet PC Independent Study Course

Schindler

Corporate R&D

Cse490ra - Tablet PC Independent Study Course

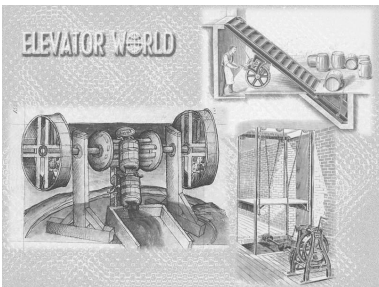
- Introduction
 - Elevators:- on the way up
 - Schindler what?
 - Who am I?
- Today's Elevator : A Subsystem Overview
- Commissioning & Maintenance Activities
- Tool Demo
- Project Goals

Schindler

Research & Development

File/Source/Jan-2012

Cse490ra - Elevators:- on the way up




Schindler

Research & Development

File/Source/Jan-2013

Cse490ra - Elevators:- on the way up




Schindler

Research & Development

File/Source/Jan-2014

Cse490ra - Elevators:- on the way up




Schindler

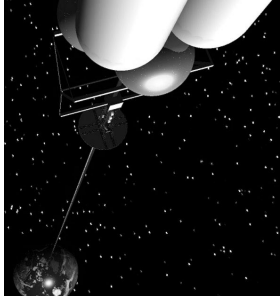
Research & Development

File/Source/Jan-2015

Cse490ra - Elevators:- on the way up



The Space Elevator



Schindler

Research & Development

File/Source/Jan-2015

Cse490ra - Schindler what?

- Schindler Elevator Corp.
- Swiss based, family owned company
- #1 in escalators, #2 overall
- 43,000 Employees worldwide
- 150+ Countries
- 15,000 Elevators sold per year
- Maintenance Portfolio > 250,000 units
- Turnover \$6 billion per year

Research & Development

File:Shindl-2011-01-03

Schindler

Cse490ra - Who am I ?

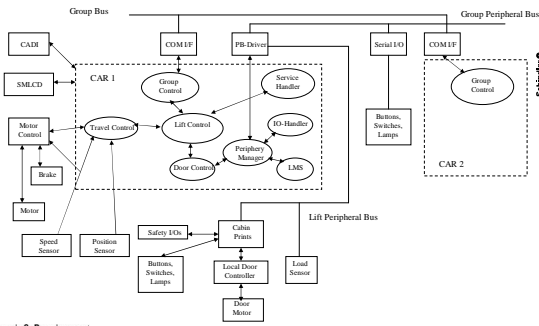
- Name: Chris Mason
- Degree: MS Computer Science - Major in AI and Diagnostic Applications
- Occupation: Chief Architect SW Devt for Schindler R&D
- Office: 15413 NE 95th St., Redmond, WA
Tel: 1 206 291 3011
- Email: chris_mason@us.schindler.com

Research & Development

File:Shindl-2011-01-03

Schindler

Cse490ra - Today's Elevator: A Subsystem Overview



Research & Development

File:Shindl-2011-01-03

Schindler

Cse490ra - Commissioning & Maintenance Activities

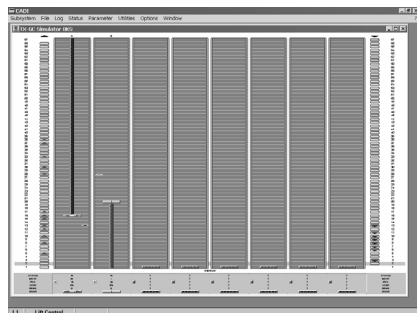
- Commissioning
 - Parameter adjustment prior to testing and final inspection.
 - Access to inspection specific commands and modes of operation.
- Preventative
 - Today mostly restricted to mechanical servicing of components including lubrication, adjustment, inspection and replacement.
- Restorative
 - Error detection & display
 - Problem analysis
 - Error elimination

Research & Development

File:Shindl-2011-01-03

Schindler

Cse490ra - Tool Demo: Group Overview



Research & Development

File:Shindl-2011-01-03

Schindler

Cse490ra - Tool Demo: Error Log

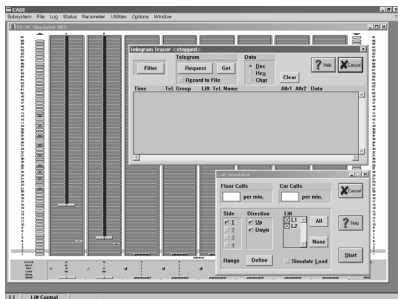
ID	Description	Category	Severity	Date	Time	Phs	Dir	Dir	Owner	Source	Extra Param.
403	SubsysStart	LIFT	ERROR	14-11-2002	17:55:25	2/3	dir	dir		STOPPED	10/0000000
403	SubsysStart	LIFT	ERROR	14-11-2002	17:55:25	2/3	dir	dir		LOCKED	10/0000000
403	PowerUp	LIFT	ERROR	14-11-2002	17:52:41	0					10/0000000
403	PowerUp	LIFT	ERROR	24-11-2002	18:22:14	0					10/0000000
403	PowerUp	LIFT	ERROR	17-11-2002	14:36:27	0					10/0000000
403	PowerUp	LIFT	ERROR	17-10-2002	14:45:23	0					10/0000000
403	PowerUp	LIFT	ERROR	17-10-2002	14:40:33	0					10/0000000
403	PowerUp	LIFT	ERROR	17-10-2002	17:45:51	0					10/0000000
403	PowerUp	LIFT	ERROR	15-10-2002	11:52:36	0					10/0000000
403	PowerUp	LIFT	ERROR	15-10-2002	17:45:51	0					10/0000000
403	PowerUp	LIFT	ERROR	4-10-2002	8:31:51	0					10/0000000
403	PowerUp	LIFT	ERROR	28-9-2002	12:22:28	0					10/0000000
403	PowerUp	LIFT	ERROR	17-9-2002	13:47:45	0					10/0000000
14	MasterCom	DRIVE	ERROR	17-9-2002	13:47:18	2/8	dir	dir		STOPPED	14/0000000
15	MasterCom	DRIVE	ERROR	17-9-2002	13:47:12	2/8	dir	dir		STOPPED	14/0000000
14	MasterCom	DRIVE	ERROR	17-9-2002	13:46:54	2/8	dir	dir		STOPPED	14/0000000
200	MasterCom	DRIVE	ERROR	17-9-2002	13:46:55	2/8	dir	dir		STOPPED	10/0000000
14	MasterCom	DRIVE	ERROR	17-9-2002	13:46:49	2/8	dir	dir		STOPPED	14/0000000
15	MasterCom	DRIVE	ERROR	17-9-2002	13:46:24	2/8	dir	dir		STOPPED	14/0000000
14	MasterCom	DRIVE	ERROR	17-9-2002	13:46:18	2/8	dir	dir		STOPPED	14/0000000
15	MasterCom	DRIVE	ERROR	17-9-2002	13:46:52	2/8	dir	dir		STOPPED	14/0000000
14	MasterCom	DRIVE	ERROR	17-9-2002	13:46:25	2/8	dir	dir		STOPPED	14/0000000
15	MasterCom	DRIVE	ERROR	17-9-2002	13:46:19	2/8	dir	dir		STOPPED	14/0000000
14	MasterCom	DRIVE	ERROR	17-9-2002	13:46:11	2/8	dir	dir		STOPPED	14/0000000
403	PowerUp	LIFT	ERROR	17-9-2002	13:44:52	0					200/0000001

Research & Development

File:Shindl-2011-01-03

Schindler

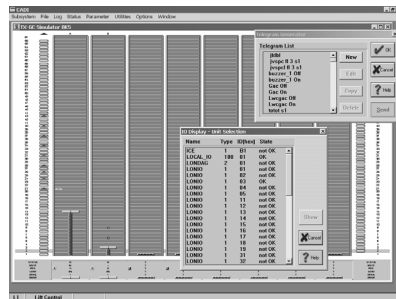
Cse490ra - Tool Demo: Call Simulation and telegram trace



Research & Development

File/Show8-Jan-23/13

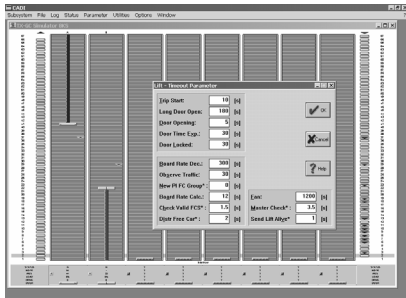
Cse490ra - Tool Demo: IO-Display and telegram generator



Research & Development

File/Show8-Jan-23/14

Cse490ra - Tool Demo : Parameter Adjustment



Research & Development

File/Show8-Jan-23/15

Cse490ra - Project Goals

- Research information on the subject of diagnostics
- Gather a basic set of User Reqts through interaction with field personnel.
- Analyze existing Diagnostic Tool I/F in light of these requirements and current technologies available.
- Propose new Diagnostic Tool I/F using current technologies and GUI paradigms.
- Execute two design and implementation cycles with a prototype Diagnostic Tool I/F as end result.
- Have fun and gain practical experience with the project process, elevators, diagnostics and the Tablet PC.

Research & Development

File/Show8-Jan-23/16