



# GroundMemo

Intelligent Home System for Seniors with Memory Loss



Shadman Abedin, Allison Chou,  
Celina Hipolito, Will Wang



## Overall Problem

Senior has mild memory loss issue

Home as the primary design space

Influence on the daily routines and tasks

Caretaker and family member as the stakeholders





Memory loss is diverse



Familiarity is key



Caretakers want  
peace of mind



## 6 Tasks

Keeping track of where things are

Giving peace of mind to traveling caretakers

Helping remember routine activities such as medicine

Allowing family members to set reminders

Checking up after a fall

Having your info automatically sent to a doctor

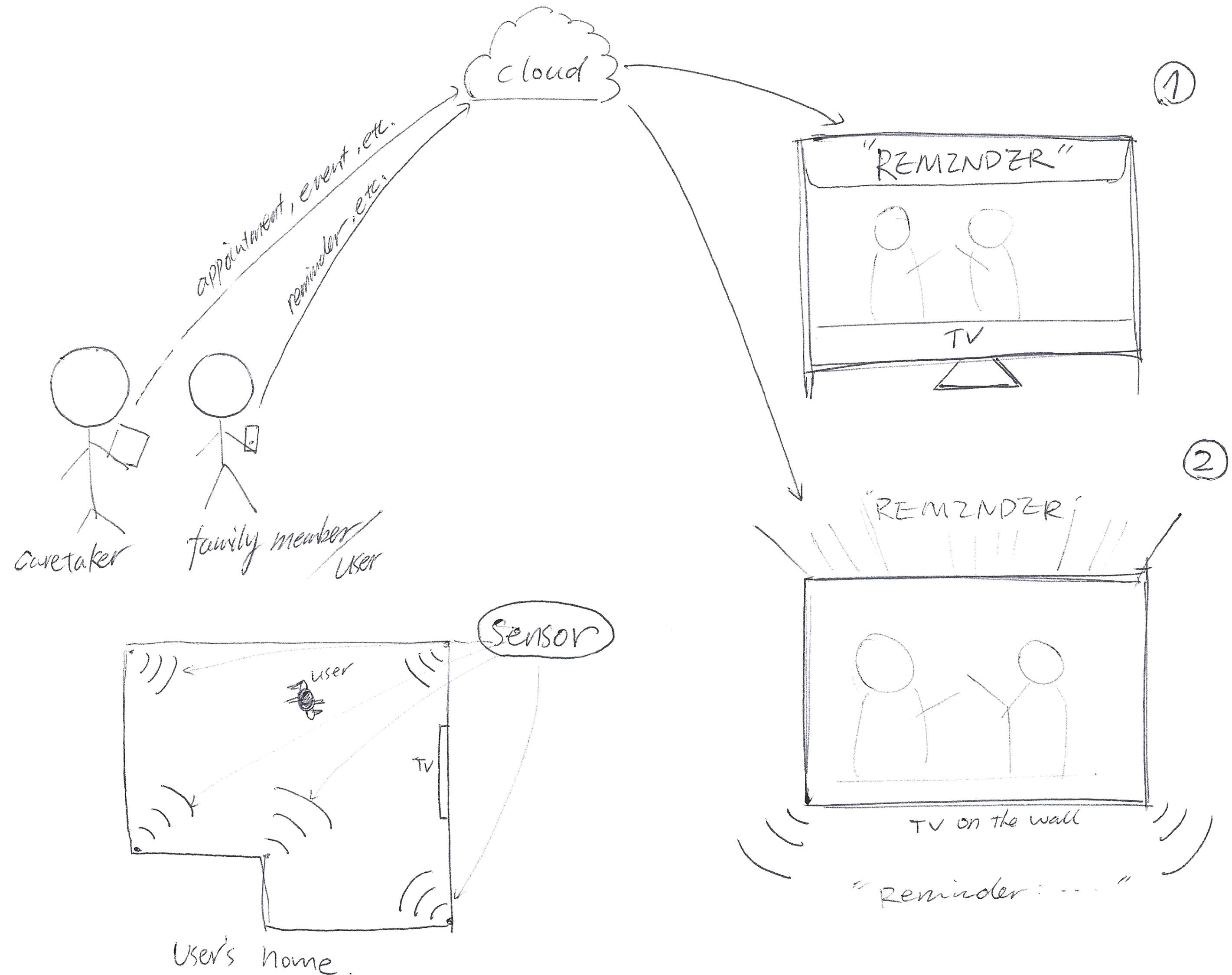




# 3 Design Sketches

## Television Notification System

- Visual and audio reminders
- Replacing ads with reminders
- Projecting behind the TV



# 3 Design Sketches

## Home Sensor System

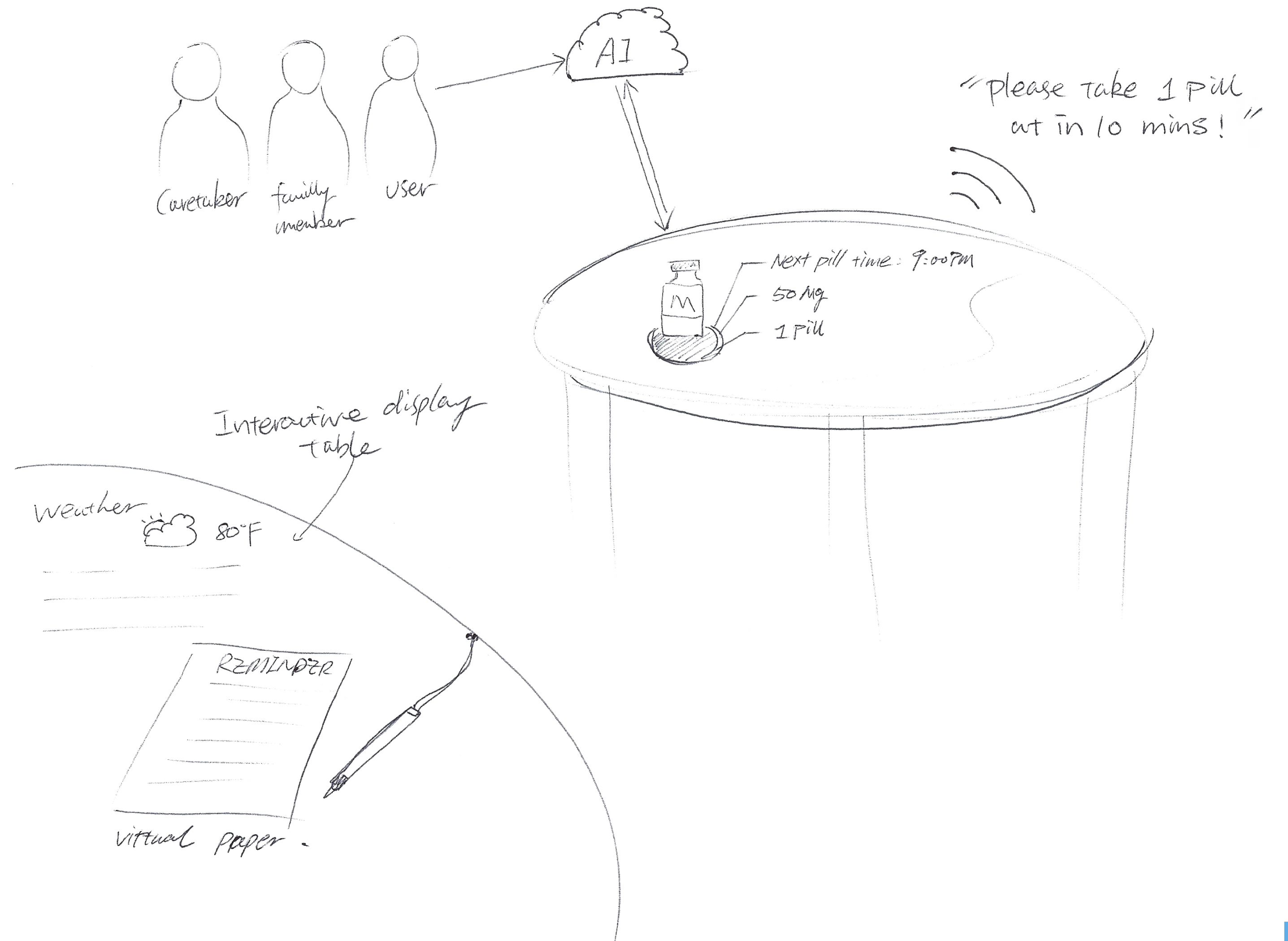
- Multiple sensors
- Interactive photo album
- Detecting emergencies and alert the caretaker/ family members



# 3 Design Sketches

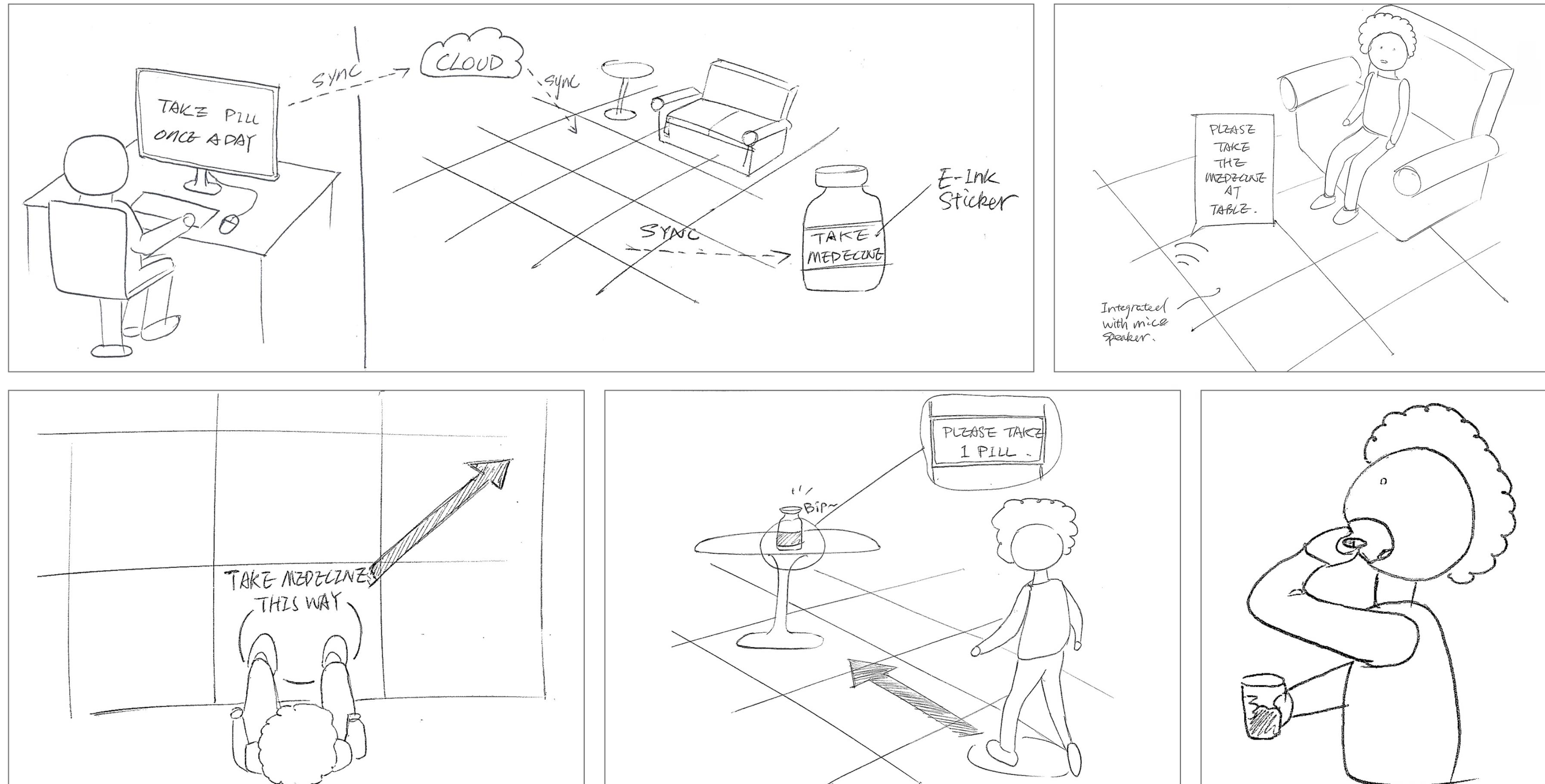
## Smart Table

- Voice assistant
- Virtual paper and a smartpen
- Detecting the use of medication





# Selected Design Storyboards and Tasks

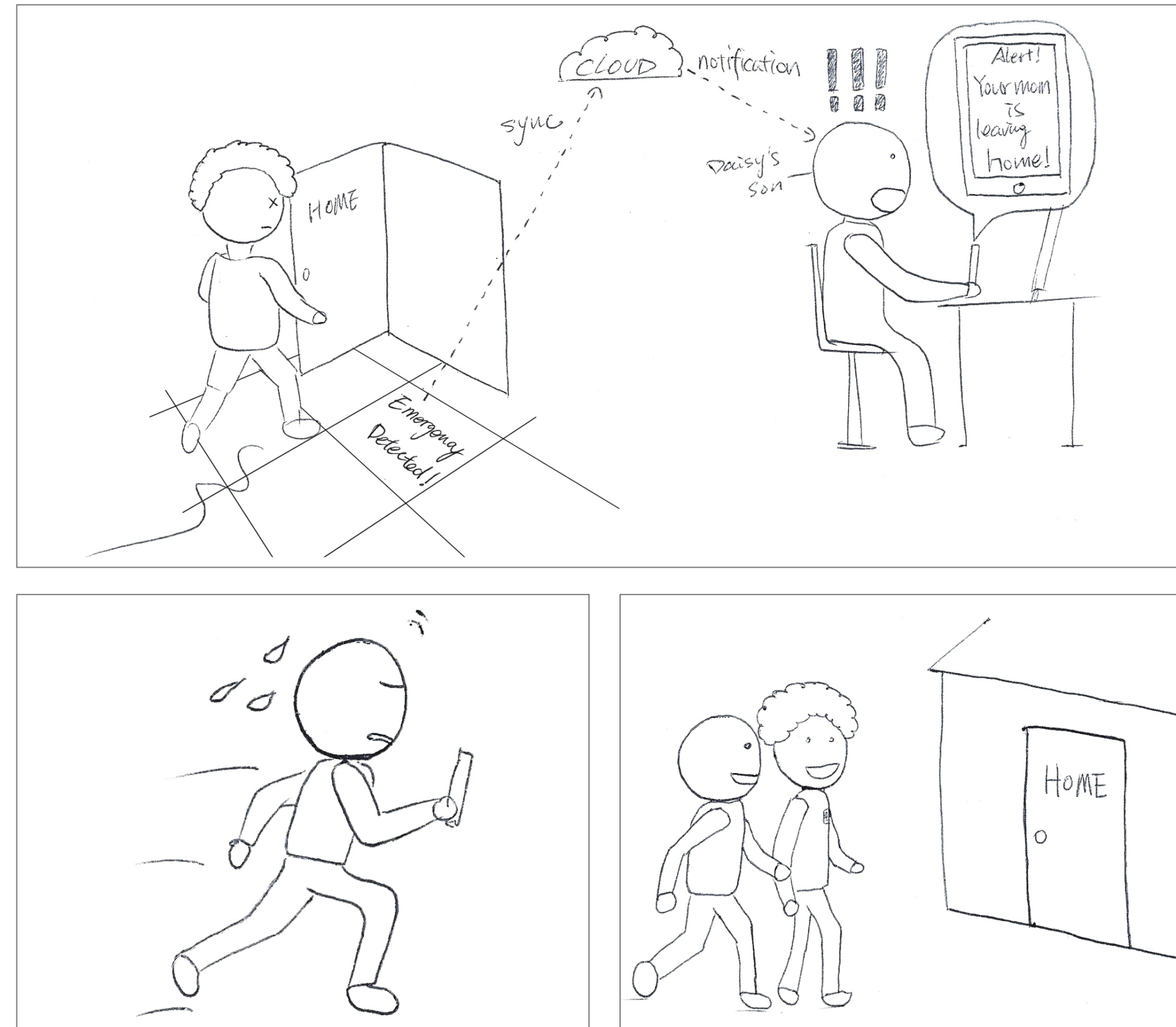


Scenario 1: GroundMemo helping with reminders





# Selected Design Storyboards and Tasks



Scenario 2: GroundMemo notifying caretakers when wandering occurs





## Key Takeaways

Research drives the iterative design

Actively ask for the critique and feedback

Design should be inclusive and intuitive

Design within the user's context

Less is more





**Thank you.**



Questions?