

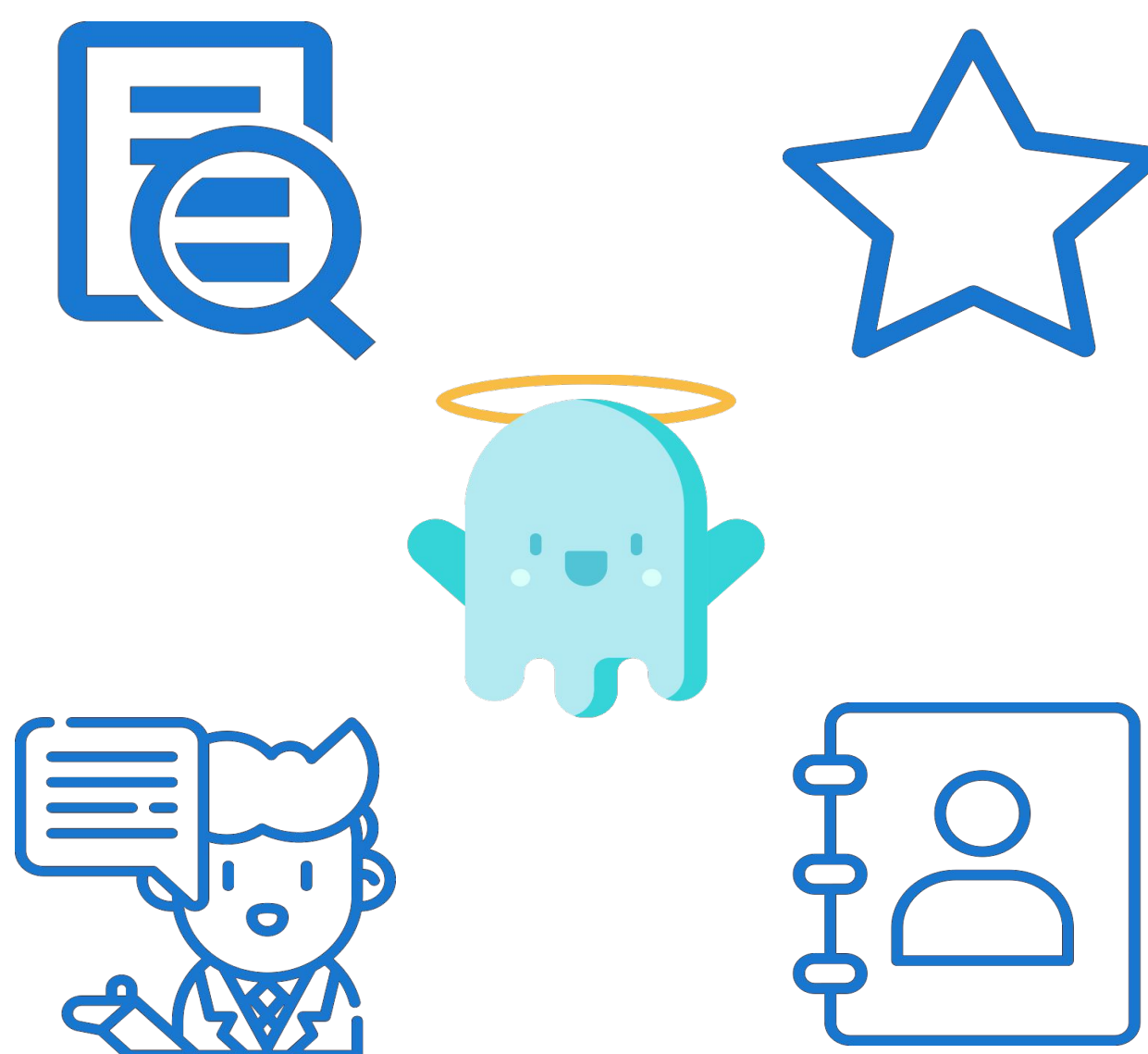
Career Coach

Enabling introverts to ace the career fair



Problem

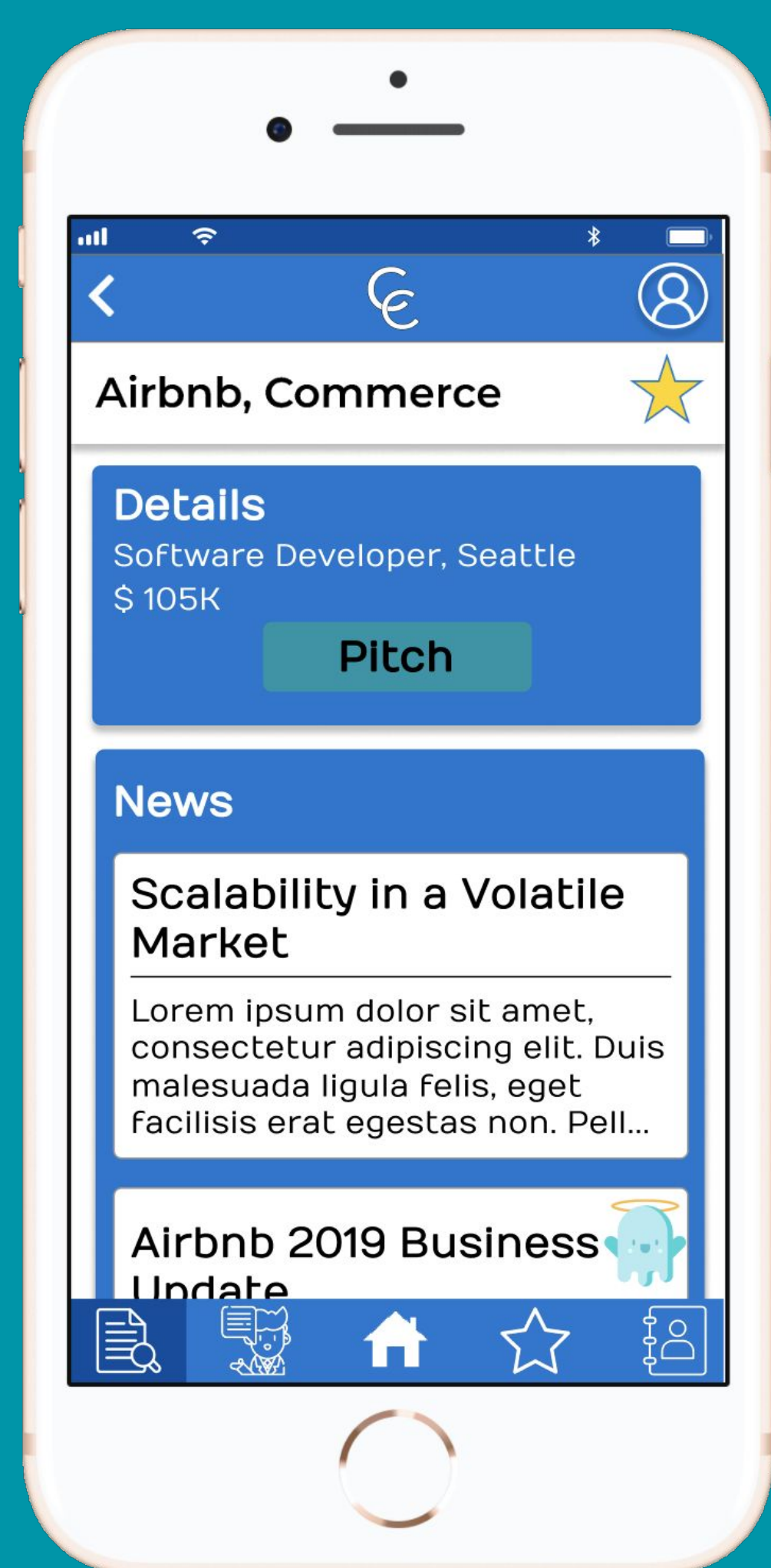
Career fairs are particularly difficult for introverts. Introverts experience emotional overwhelm and the pressure to act like extroverts at career fairs.



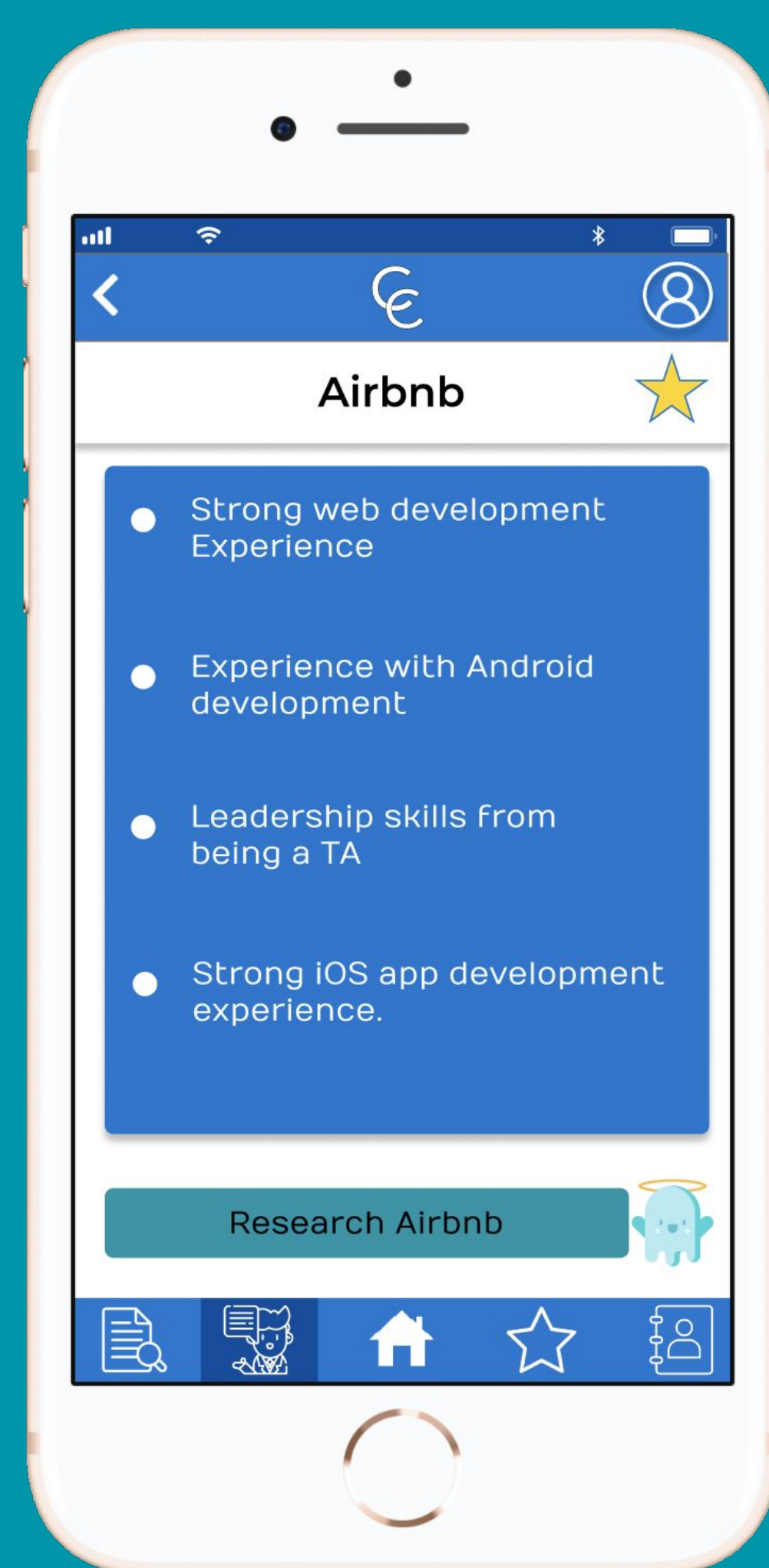
Value Proposition

Career Coach provides **networking preparation tools** at every step of the career fair and **mood boosting tips** to keep introverts in the game.

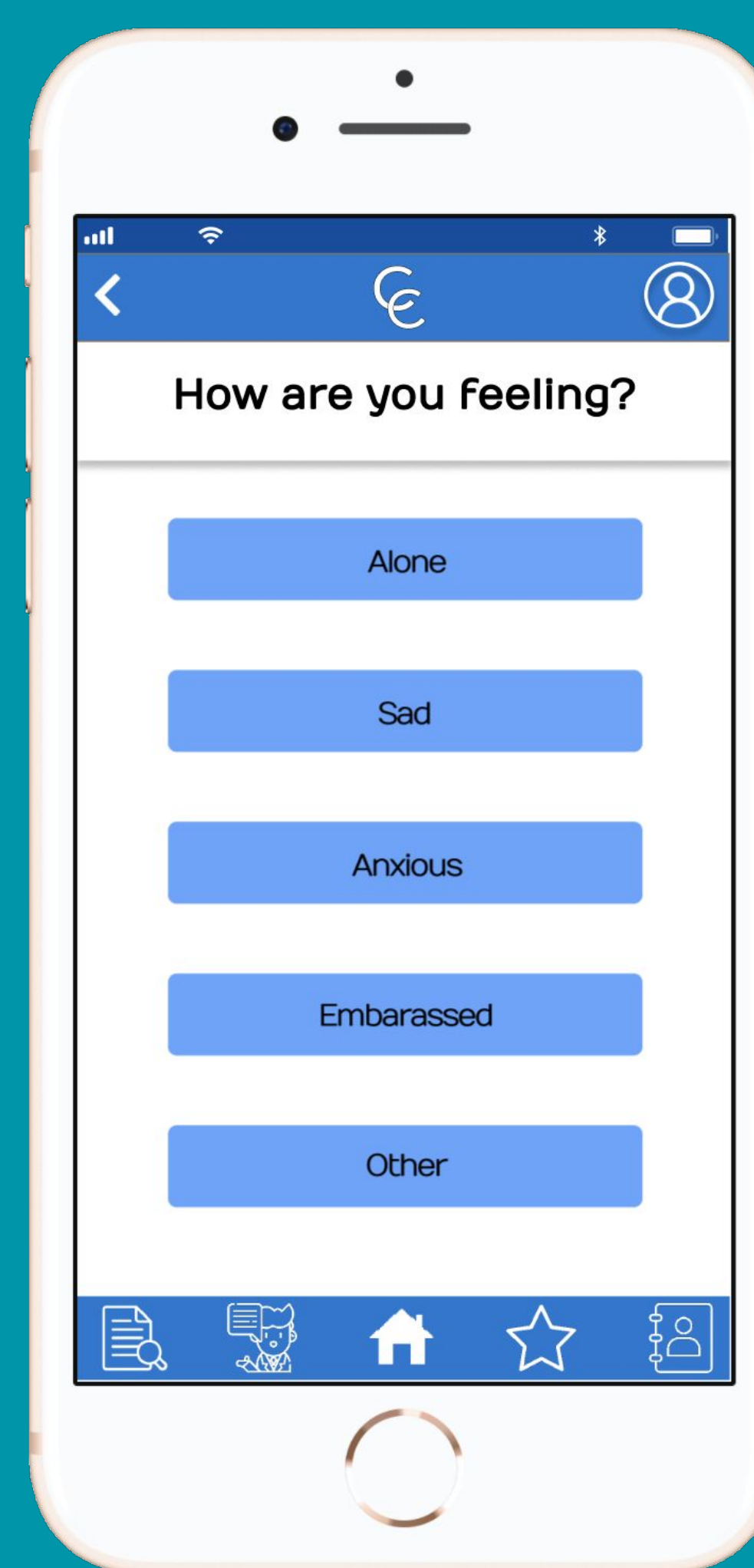
Key Features



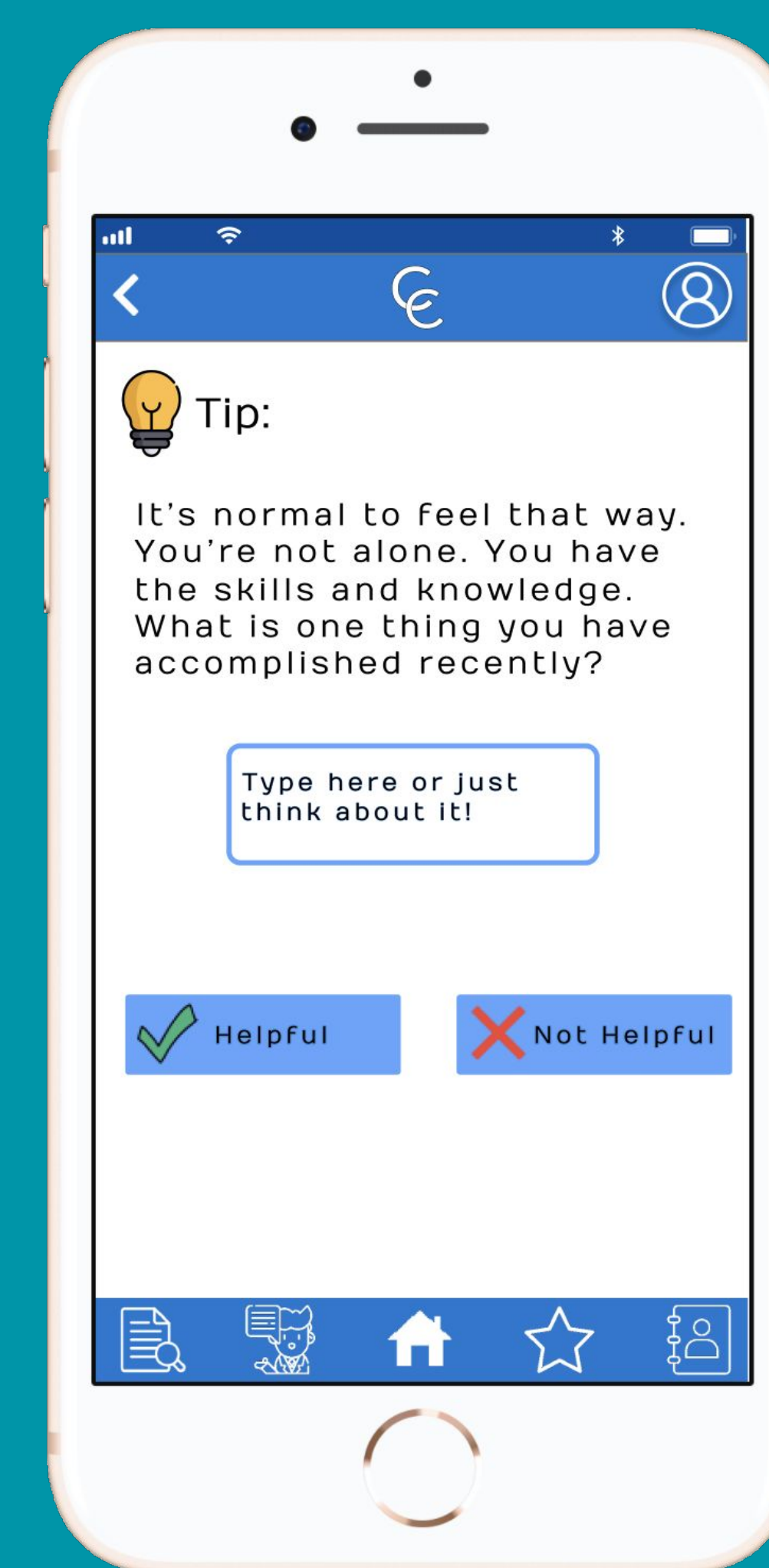
Research Companies



Generate Custom Pitches

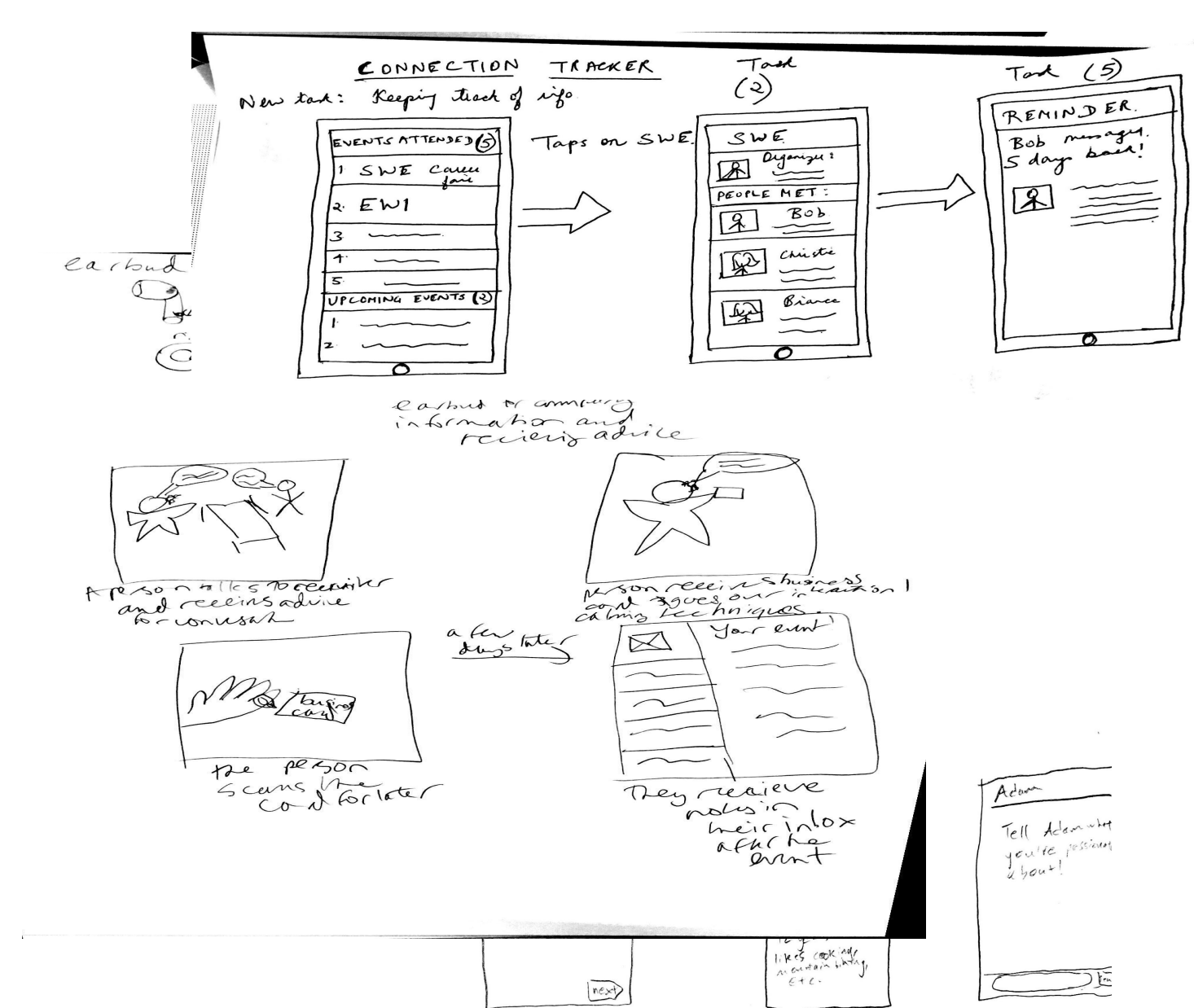


Evaluate Emotions



Generate Custom Tips

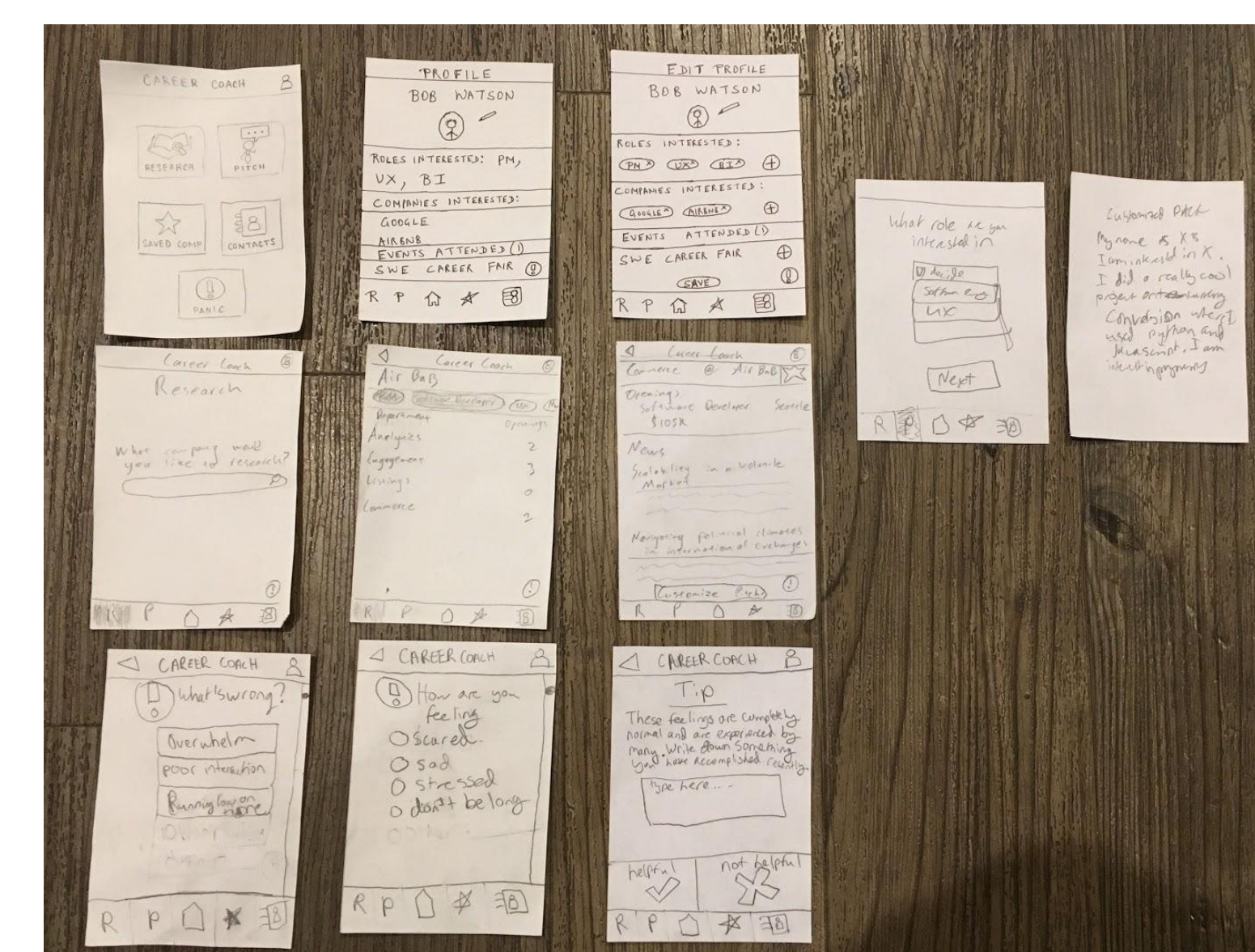
Design Iteration



Sketches



Heuristic Evaluation



Paper Prototype