

## Section 3

### Contextual Inquiry Checkin



# Critique setup

One interview completed-how did it go?

Potential emergent tasks or problems

Open questions

Changes to interview protocol

# Logistics

We will split the class in half (3 groups per half)  
Each group gets 15 minutes (5 to present, 10 for critique)

# Critique rules

When receiving critique:

- Try not to get defensive (we know it's hard)
- Take notes
- Invite constructive criticism

When giving critique:

- Explain why
- Give actionable suggestions
- Hamburger method (nice, criticism, nice)

# Morning Section



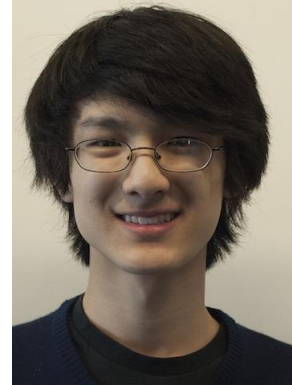
Running with Friends  
Mood Tracking  
Household Grocery Shopping

Distraction Tracking  
Subscription Management

# Afternoon Section



Joint Pain  
Noise Exposure  
Water & Dehydration



Discretionary Spending  
IEP Tracking