

So you want to get started with a new text editor?

Here's a list of editors we've seen used in the past:

- **Vim**

- Basic text editor with widespread popularity
- Pretty powerful if you learn the shortcuts well
 - Look at <https://courses.cs.washington.edu/courses/cse374/22sp/resources/vimcheatsheet.html> for a .vimrc that follows the 333 style guidelines
- Built in on cancan, and has a nice GUI on the CSE VM
- Most TAs have experience with this

- **Emacs**

- Traditional Linux text editor along with vim
- Built in on cancan, has a nice GUI on the CSE VM
- Is very powerful if you learn the shortcuts well
- Not all the TAs will have experience with this

- **Visual Studio Code**

- Popular choice in CSE 374
- Easier to learn than the above two
- Can be opened from your computer's OS and stores files remotely on cancan
- The rest of this document has a guide on how to set it up 😊
- Not all the TAs will have experience with this

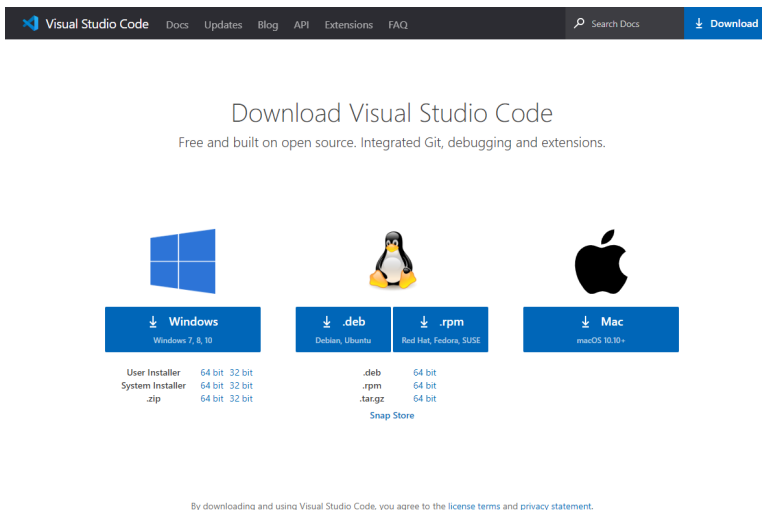
Opening files from Linux on a Windows machine sometimes breaks the line endings so it's recommended you go with Vim, Emacs, or VSCode and use SCP to transfer files to avoid that from happening.

If you have any questions, feel free to post on the Ed discussion board

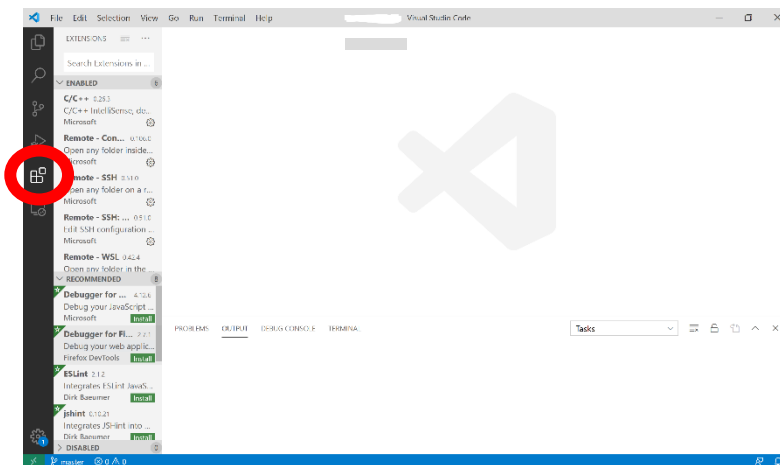
How to Connect Visual Studio Code to Cancun

Prerequisite: Before you start, you need to log on to your Cancun account to create your home directory.

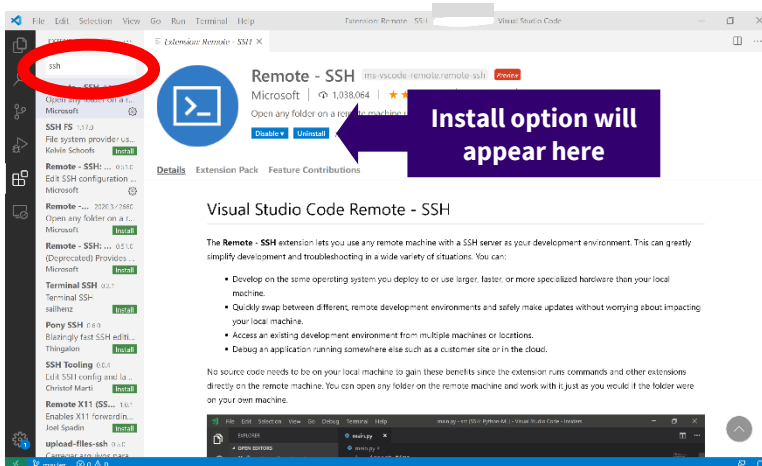
1. Download VSCode from <https://code.visualstudio.com/Download>



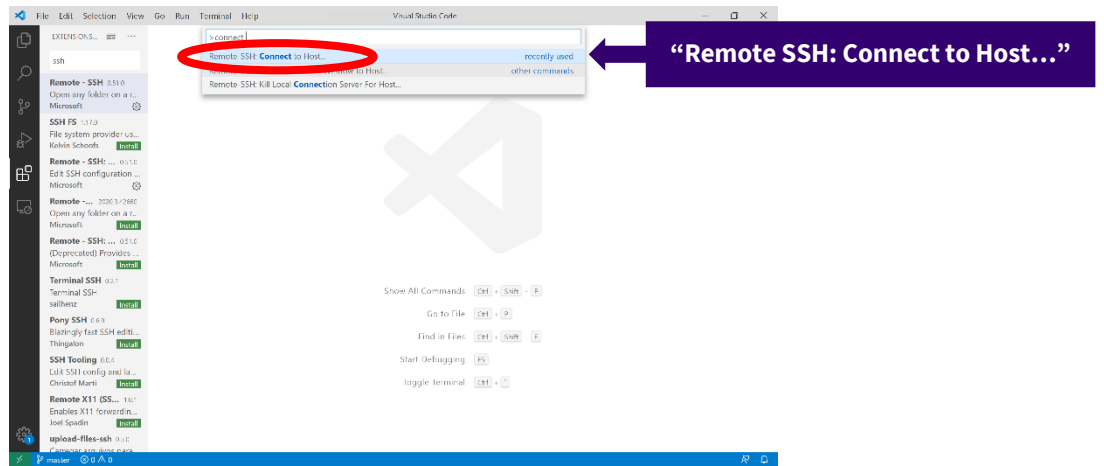
2. Click on the Extensions tab on the side (looks like three blocks with a fourth being added).



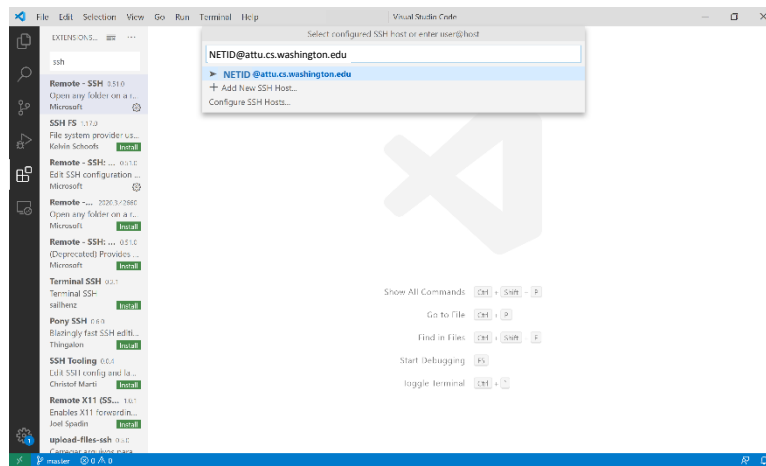
3. Search for "Remote - SSH" and install.



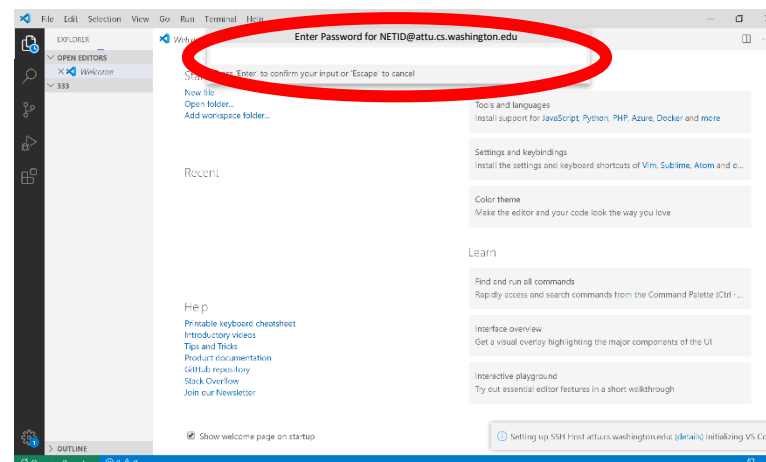
4. Open the command palette with one of the following:
 - a. F1
 - b. Cmd-Shift-P or Ctrl-Shift-P
 - c. Go to View tab at the top → Command Palette
5. Type in “Connect to Host” and select the “Remote SSH: Connect to Host...” option.
 - a. It may not be the first one in the list



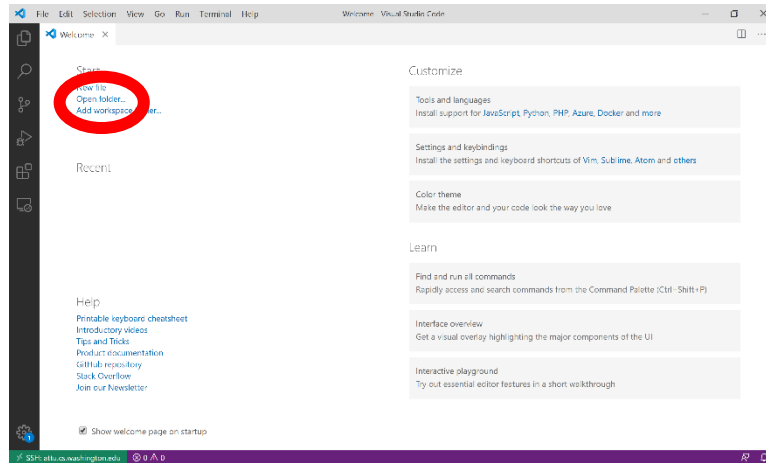
6. Type the path to ssh into cancan with your NetID, “[NetID]@cancun.cs.washington.edu” without the square brackets or quotations marks, then press enter
 - a. If a popup appears asking “Choose a platform”, click on Linux



7. Enter your password, then press enter.

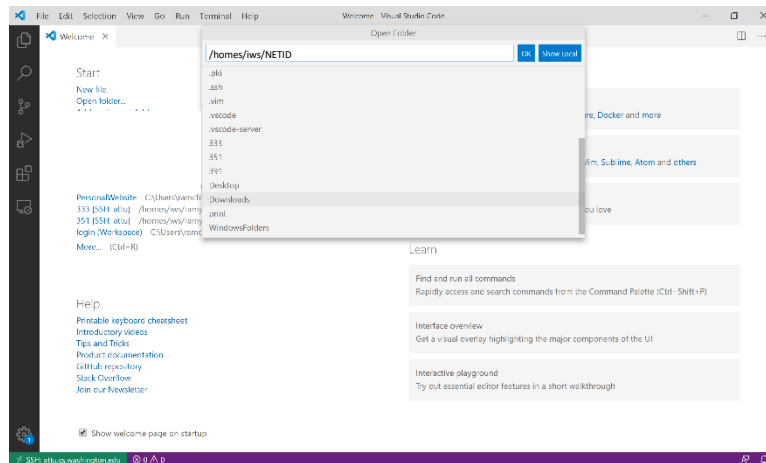


8. Click on Open Folder

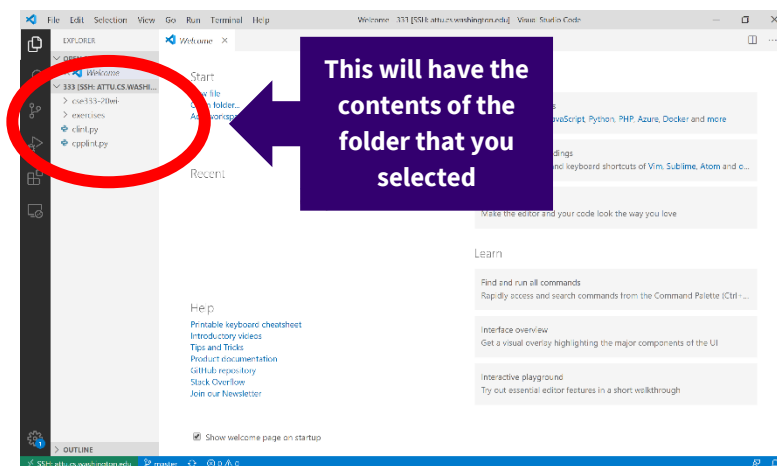


9. Select the folder you would like to work in (the default should be your home directory on Cancun).

- a. Folders are nested so if the folder you want to use is inside another folder you can click to it as you would cd using Cancun



10. You did it!



If you have any issues, feel free to reach out on the Ed discussion board. Some of the TAs have experience setting this up and can help you troubleshoot.