

URBAN GROWTH AND UNEMPLOYMENT

Thomas Nolan

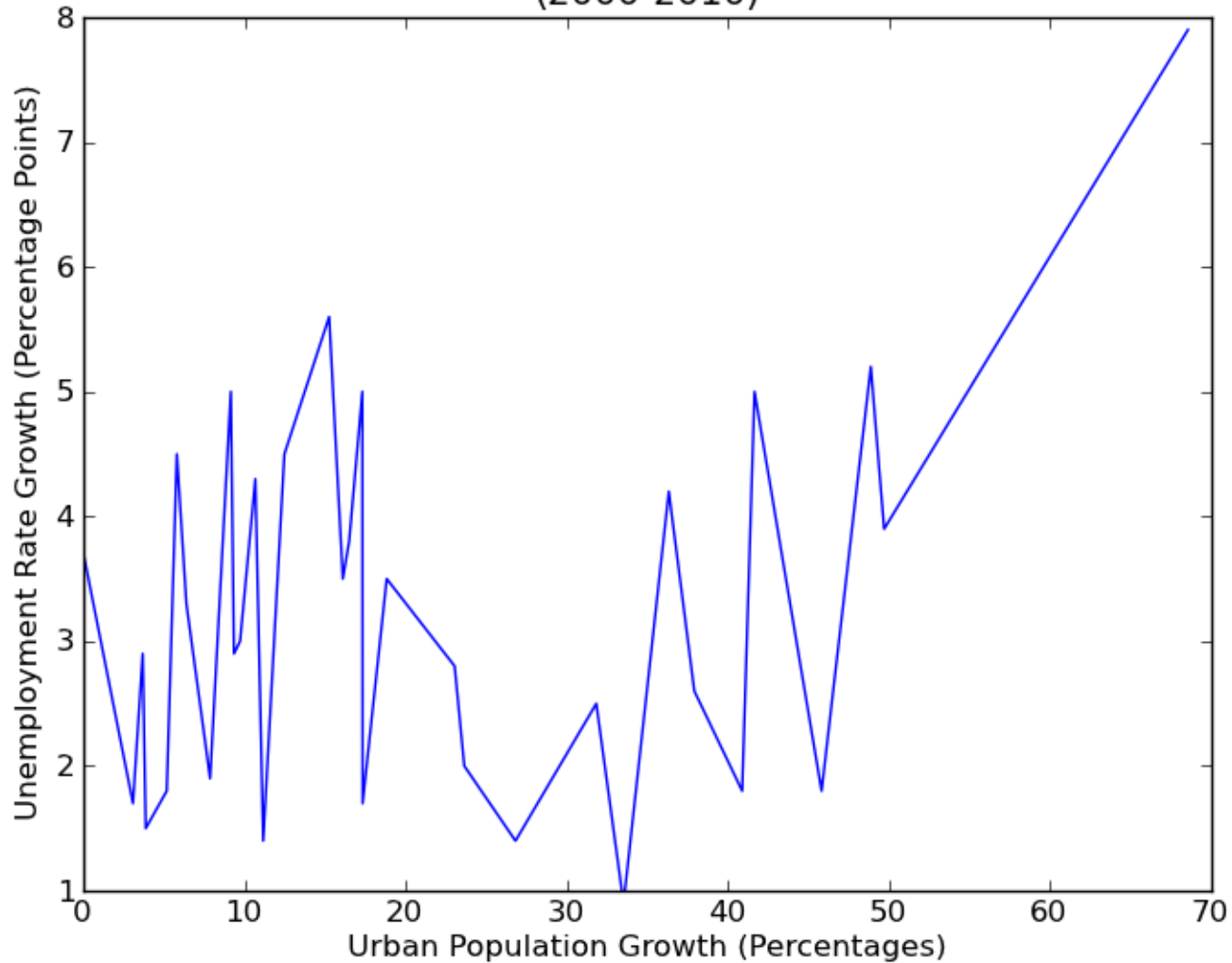
Motivation: Based on trends in the growth of cities, is it possible to plan for concomitant unemployment increases?

Research Question (Primary): *How can we describe the relationship between urban growth and unemployment in Washington State?*

Research Question (Secondary): *How could this research be refined in terms of time-scale?*

Research Question (Primary): Results

Unemployment and Urban Growth in Washington Counties (2000-2010)



Pearson Correlation Coefficient: 0.26034262481174902

Research Question (Secondary): Results

Unemployment in Washington Counties (2000-2010)

