

Searching for the Right Stuff

**FIT
100**

Locating information on the Internet is difficult, because there are so many places to look. To improve the chances of finding exactly the right stuff, look in the right places.

© University of Washington, 2001

**FIT
100**

For Tax Information ... Visit IRS

Principle: *Look for information where it is likely to be found*

<http://www.irs.ustreas.gov>

You were told you need some IRS form to apply for financial aid but where do you get it?

[Tax Stats](#) | [Tax Info For You](#) | [Tax Info For Business](#)
[Electronic Services](#) | [Taxpayer Help & Ed](#) | [Tax Regs In English](#)
[IRS Newsstand](#) | [Forms & Pubs](#) | [What's Hot](#) | [Meet The Commissioner](#)
[Comments & Help](#) | [How to Contact Us](#) | [Site Tree](#) | [IRS Jobs](#)
[Preview Our New Look](#)



IRS - The Digital Daily: Income Tax Forms, Instructions, Publications, Regulations, and other stuff - Netscape

File Edit View Go Communicator Help

Back Forward Reload Home Search Netscape Print Security

Bookmarks Netsite <http://www.irs.ustreas.gov/>

Instant Message Members WebMail Connections Baljournal SmartUpdate Myplace RealPlayer

PRINTED: ENVIRONMENTAL AND IT'S FREE! DEPARTMENT OF THE TREASURY INTERNAL REVENUE SERVICE AND YOU DON'T HAVE TO RECYCLE! Presenting The Fastest, Easiest Tax Publication On The Planet

THE DIGITAL DAILY

FASTER THAN A SPEEDY 1040 EZ ... APR 2, 2001 (3 DAYS UNTIL APRIL 15TH) ... It's an extra day to file your 2000 income tax return, but the April 15, 2001

Siblings Score Science Scholarship, Parents Get Extra Credit

IRS Hiring Hundreds Now!

Small Business and Self Employed COMMUNITY

Abusive Tax Shelter? Watch out for the Red Flags!

e-file
Your Direct Link To Electronic Filing.

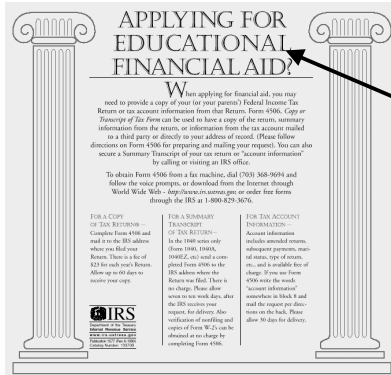
TWINSBURG, OH Twin brothers Alan and Andre Merano took top honors for their Science Fair project, *Differences and Similarities Between Children of Multiple Births*. The brothers will share the first place science scholarship award.

© University of Washington, 2001

FIT 100

Navigate the IRS Page

❖ Well-designed pages should facilitate search



This probably won't help you organize your birthday card list, but our Tax Calendar will help you find important individual, business, and excise tax dates for 2001.

W-4 Calculator

Figure your Federal income tax withholding so your employer can withhold the correct amount from your pay. Because your tax situation may change, you may want to refigure your withholding each year.

Taxpayer Rights Corner

This is your one-stop shop for taxpayer rights information.

Taxpayer Advocate Service

Find out about your rights as a taxpayer and how to get help with a problem.

IRS Appeals and Dispute Resolution

If you disagree with the results of an audit or IRS Collection actions, you may have the right to an appeal.

Earned Income Tax Credit (EITC)

Learn about the earned income tax credit and find out if you are eligible.

Taxpayer Relief Act of 1997

Notice 97-60, *The Taxpayer Relief Act of 1997*, established tax incentives for certain higher education expenses. This Notice contains questions and answers on the Hope Scholarship Credit and Lifetime Learning Credit, a deduction for student loan interest, and creating Education Individual Retirement Accounts. Get your questions answered here.

Educational Financial Aid

If you're applying for educational financial aid you may need IRS Pub 1577 and Form 4506.

Do You need to File a Federal Income Tax Return?

Every year millions of people file Federal Income Tax returns even though they are not required to. Find out if your income is below the filing requirement.

FIT 100

Can Search Locally, at IRS

**FIT
100**

Search Engines

- ❖ A Search Engine is a program that performs two basic functions:
 - “Crawls the Internet” building an index of URLs and key terms that characterize the content of the page
 - “Lists the URLs” associated with a given set of key word terms according to the index
- ❖ Crawling is an ongoing activity to keep up with newly added pages and to prune broken links
- ❖ Listing is performed on demand from users

The effectiveness of a search engine is related to the amount of the Internet that it has “seen” and how discriminating its index is

© University of Washington, 2001

**FIT
100**

Google

- ❖ Google is a relatively sophisticated search engine

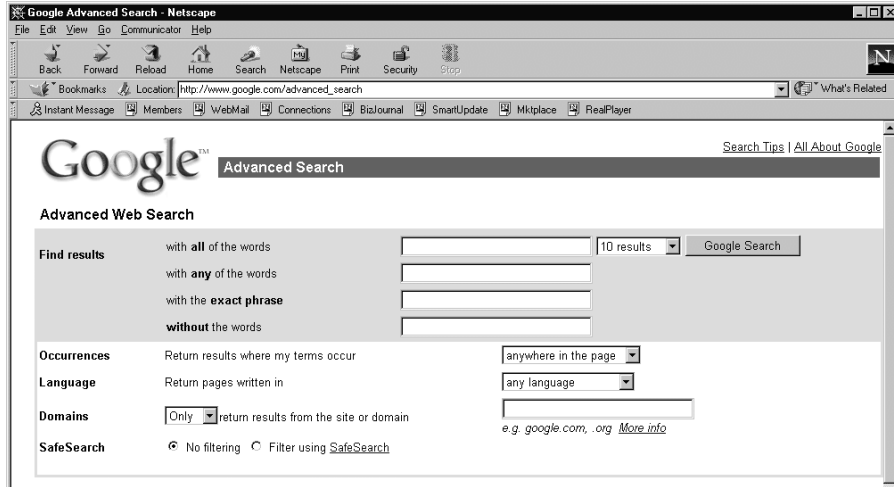
The “basic search” is often effective based on their rankings

The “advanced search” is usually better if you spend a moment thinking



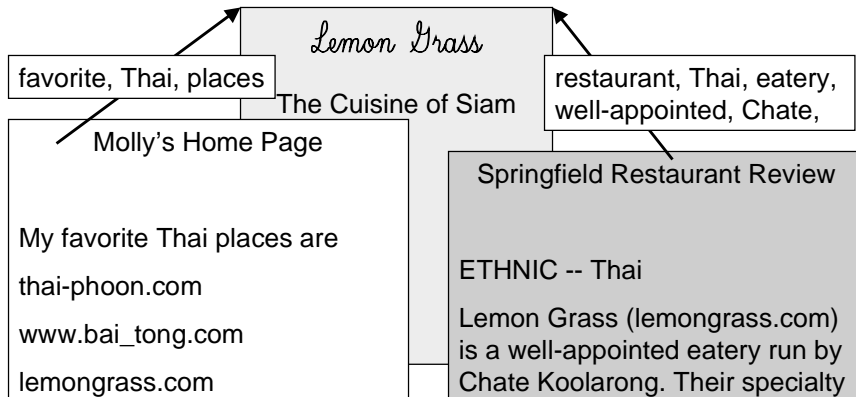
© University of Washington, 2001

Google: Advanced Search



Google's Sophistication

- ❖ Google is a search engine that indexes a page by the words used in the pages that link to it



**FIT
100**

Google: Advanced Search

“AND constraints”: cat AND had AND rat

“OR constraints”: red OR blue OR green

The screenshot shows the Google Advanced Search interface. On the left, there are radio buttons for search criteria: "with all of the words", "with any of the words", "with the exact phrase", and "without the words". Below these are sections for "Occurrences", "Language", and "Domains". On the right, there are three input fields for search terms. The first field contains "cat hat rat", the second "red blue green", and the third "square". A dropdown menu shows "10 results". At the bottom right, there are dropdown menus for "anywhere in the page" and "any language", and a text input field for domains with the example "e.g. google.com, .org" and a "More info" link.

“NOT constraints”: NOT square

© University of Washington, 2001

**FIT
100**

Summary

- ❖ Search where you will find the information you seek
- ❖ Navigating around a site is often effective
- ❖ Local search can find candidate pages
- ❖ Search engines build indexes to assist in searching web
- ❖ When asking for two (or more) words or phrases, specify whether
 - Both words must be present: AND
 - At least one of the words be present: OR
 - The word(s) must be absent: NOT

© University of Washington, 2001