

# CSEP 590 A

## Computational Biology

RNA: Function, Secondary Structure  
Prediction, Search, Discovery

# The Message

Cells make lots of ~~RNA~~ *noncoding* RNA

Functionally important, functionally diverse

Structurally complex

New tools required

alignment, discovery, search, scoring, etc.

# Rough Outline

## Today

Noncoding RNA Examples

RNA structure prediction

## Next Time

RNA “motif” models

Search

Motif discovery

# RNA

DNA: DeoxyriboNucleic Acid

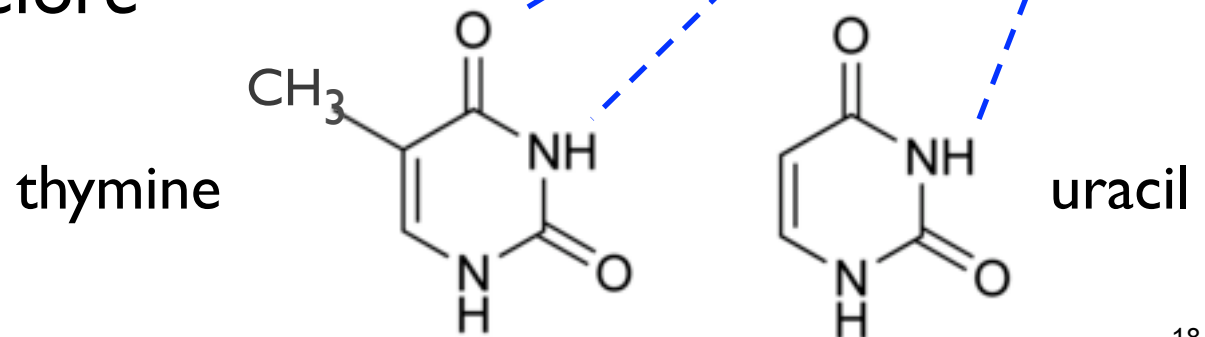
RNA: RiboNucleic Acid

Like DNA, except:

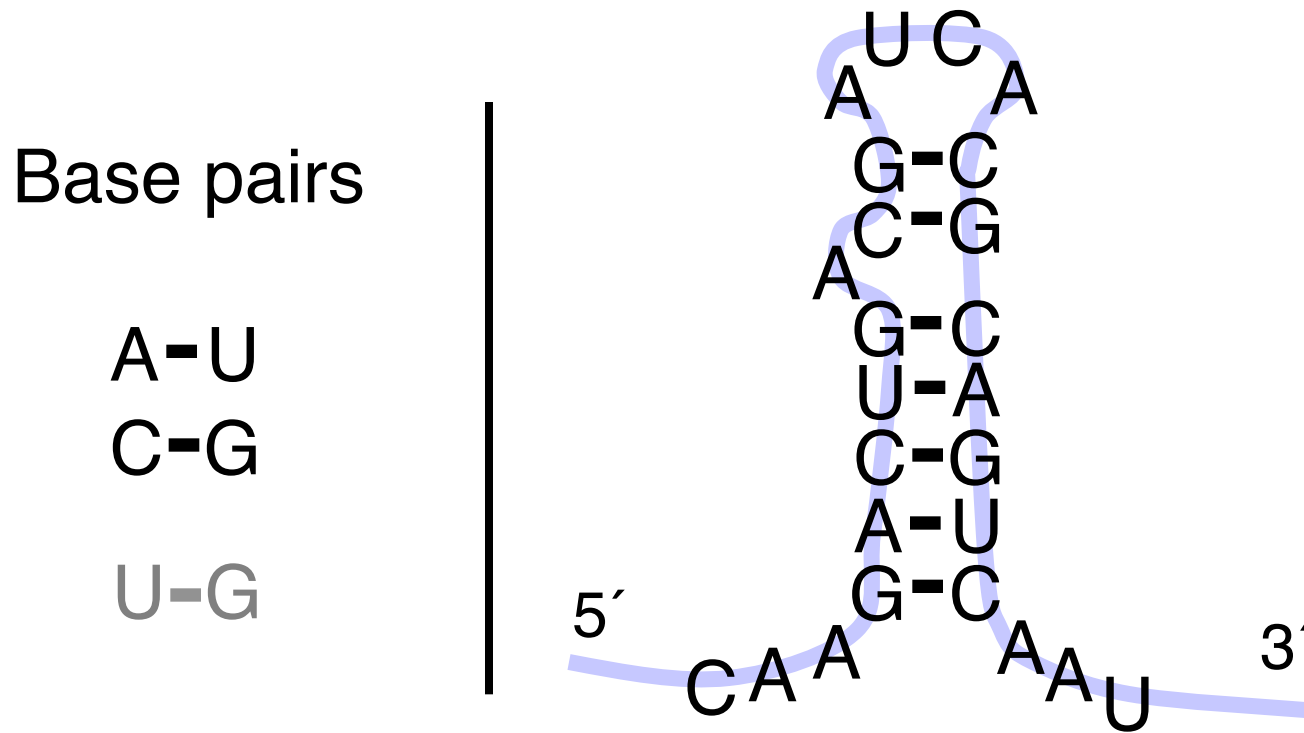
Lacks OH on ribose (backbone sugar)

Uracil (U) in place of thymine (T)

A, G, C as before



# RNA Secondary Structure: RNA makes helices too



Usually *single* stranded

# Central Dogma of Molecular Biology

by

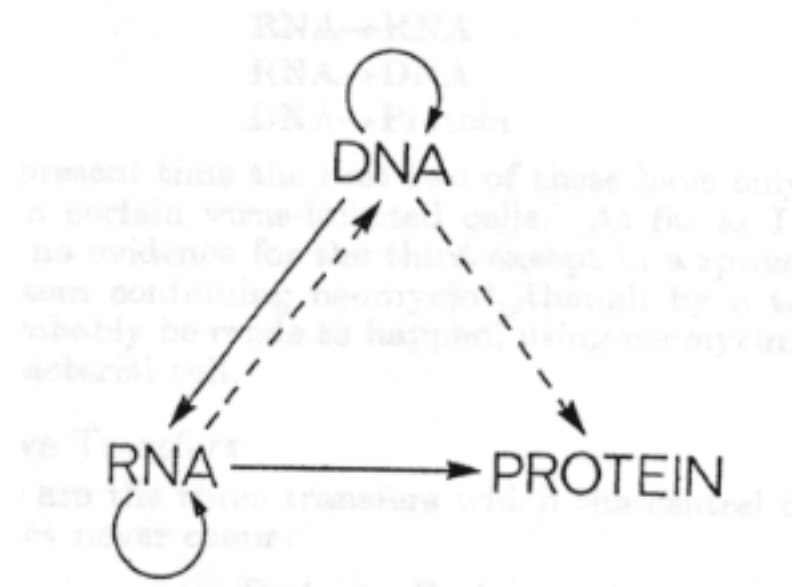
FRANCIS CRICK

MRC Laboratory  
Hills Road,  
Cambridge CB2 2QH

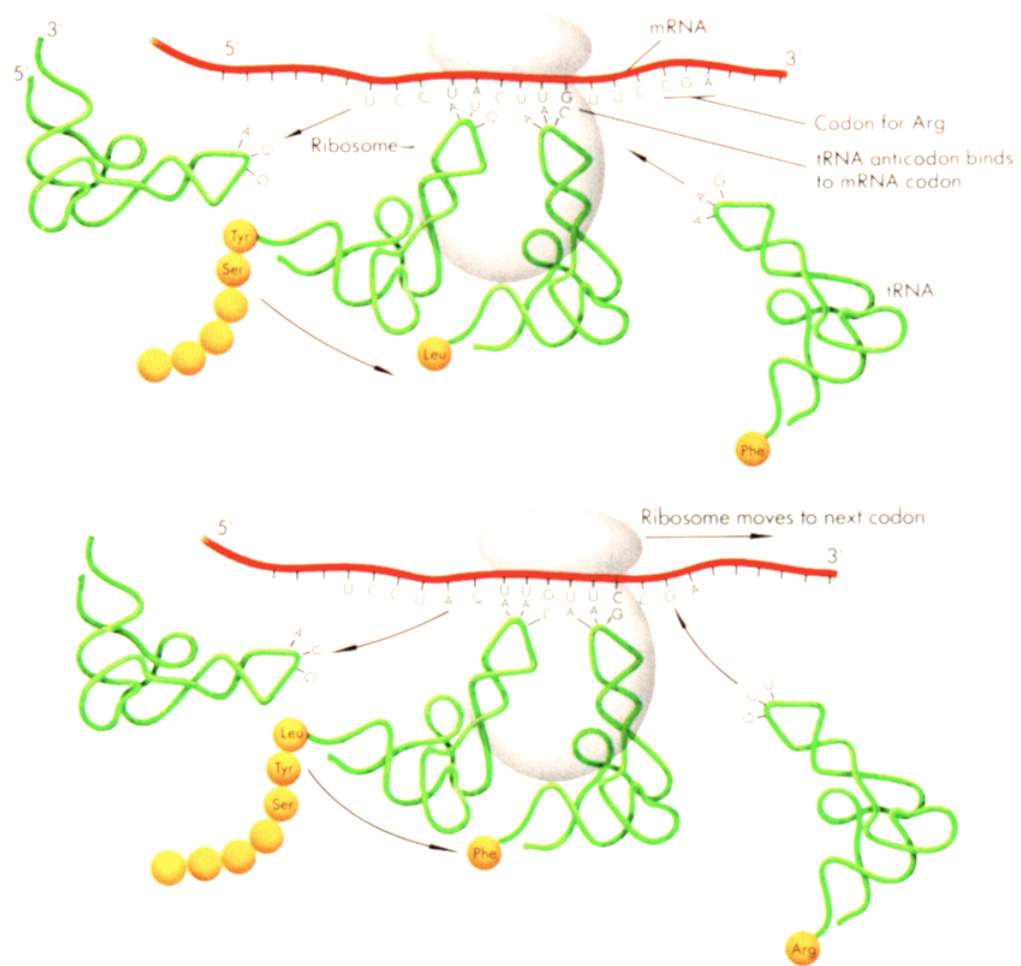
The central dogma of molecular biology deals with the detailed residue-by-residue transfer of sequential information. It states that such information cannot be transferred from protein to either protein or nucleic acid.

“The central dogma, enunciated by Crick in 1958 and the keystone of molecular biology ever since, is likely to prove a considerable over-simplification.”

Fig. 2. The arrows show the situation as it seemed in 1958. Solid arrows represent probable transfers, dotted arrows possible transfers. The absent arrows (compare Fig. 1) represent the impossible transfers postulated by the central dogma. They are the three possible arrows starting from protein.



# Ribosomes



# Ribosomes

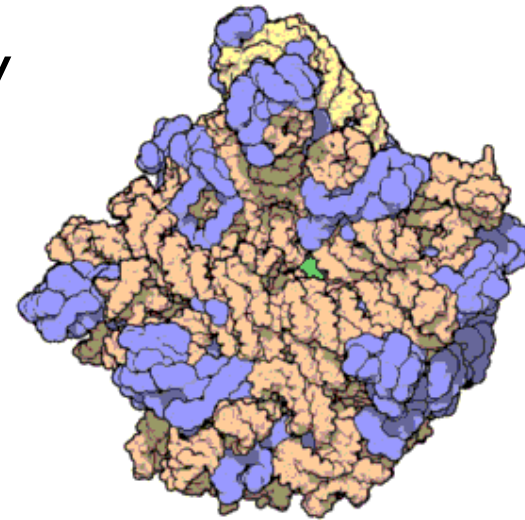
1974 Nobel prize to Romanian biologist George Palade (1912-2008) for discovery in mid 50's

50-80 proteins

3-4 RNAs (half the mass)

Catalytic core is RNA

Of course, mRNAs and tRNAs (messenger & transfer RNAs) are critical too



Atomic structure of the 50S Subunit from *Haloarcula marismortui*. Proteins are shown in blue and the two RNA strands in orange and yellow. The small patch of green in the center of the subunit is the active site.

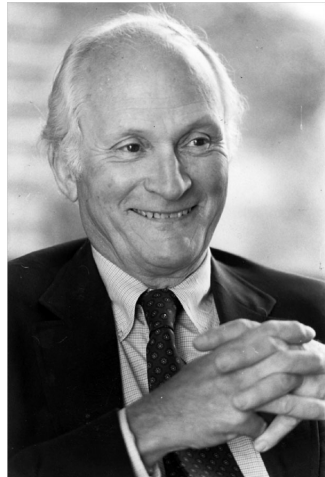
- Wikipedia



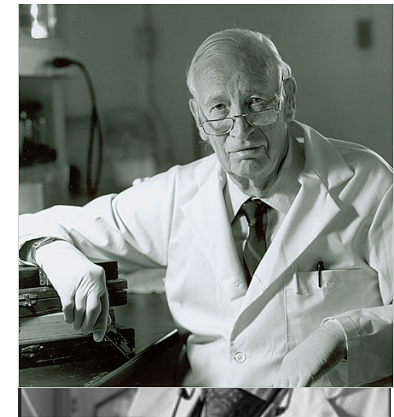
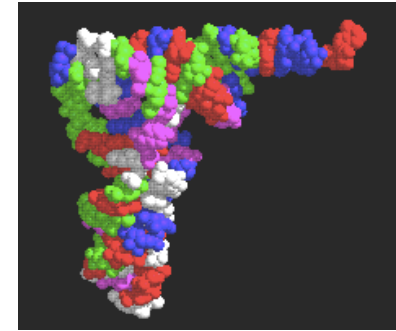
# Transfer RNA

The “adapter” coupling mRNA to protein synthesis.

Discovered in the mid-1950s by



Mahlon Hoagland (1921-2009, left), Mary Stephenson, and Paul Zamecnik (1912-2009; Lasker award winner, right).



# Bacteria

Triumph of proteins

80% of genome is coding DNA

Functionally diverse

receptors

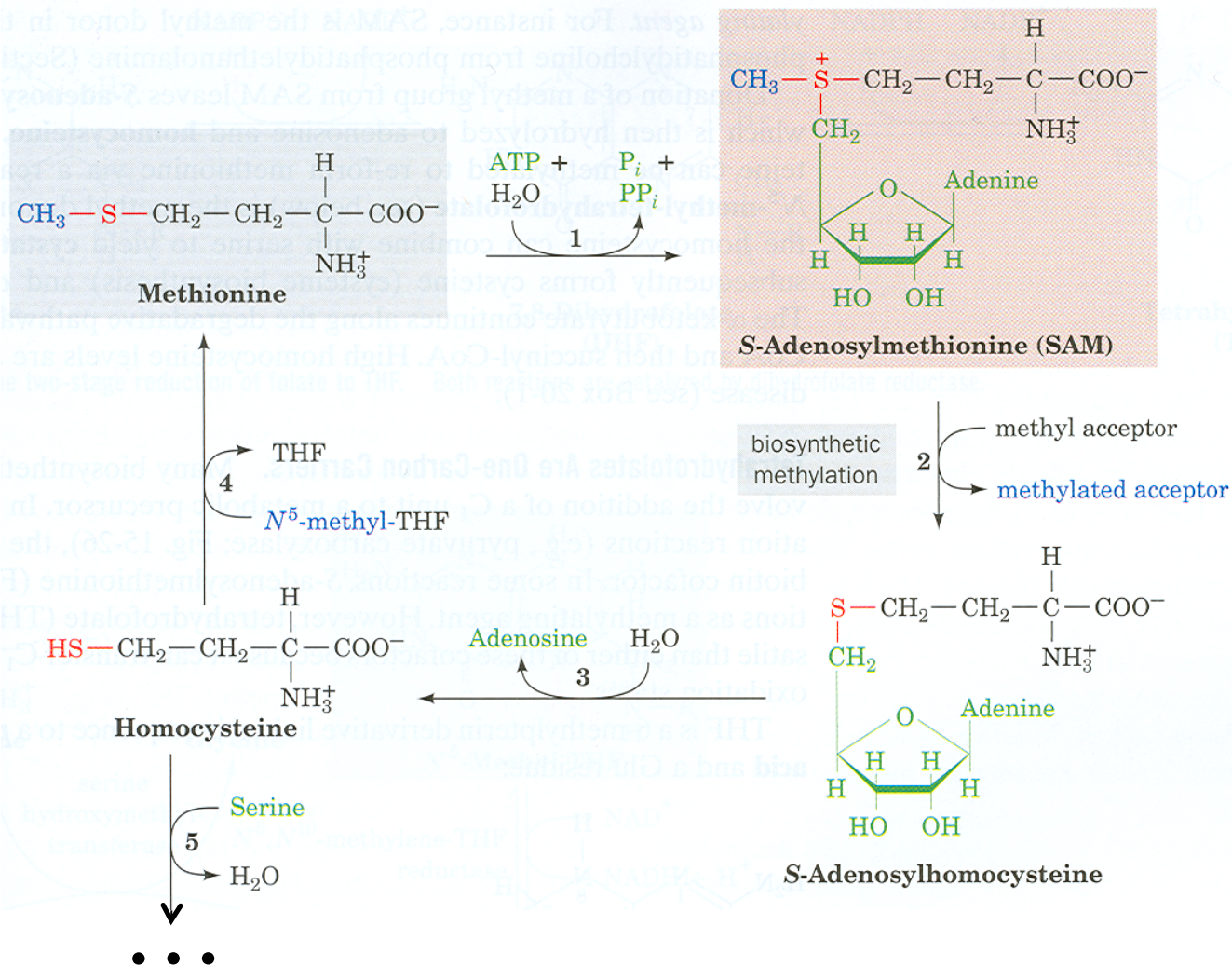
motors

catalysts

regulators (Monod & Jakob, Nobel prize 1965)

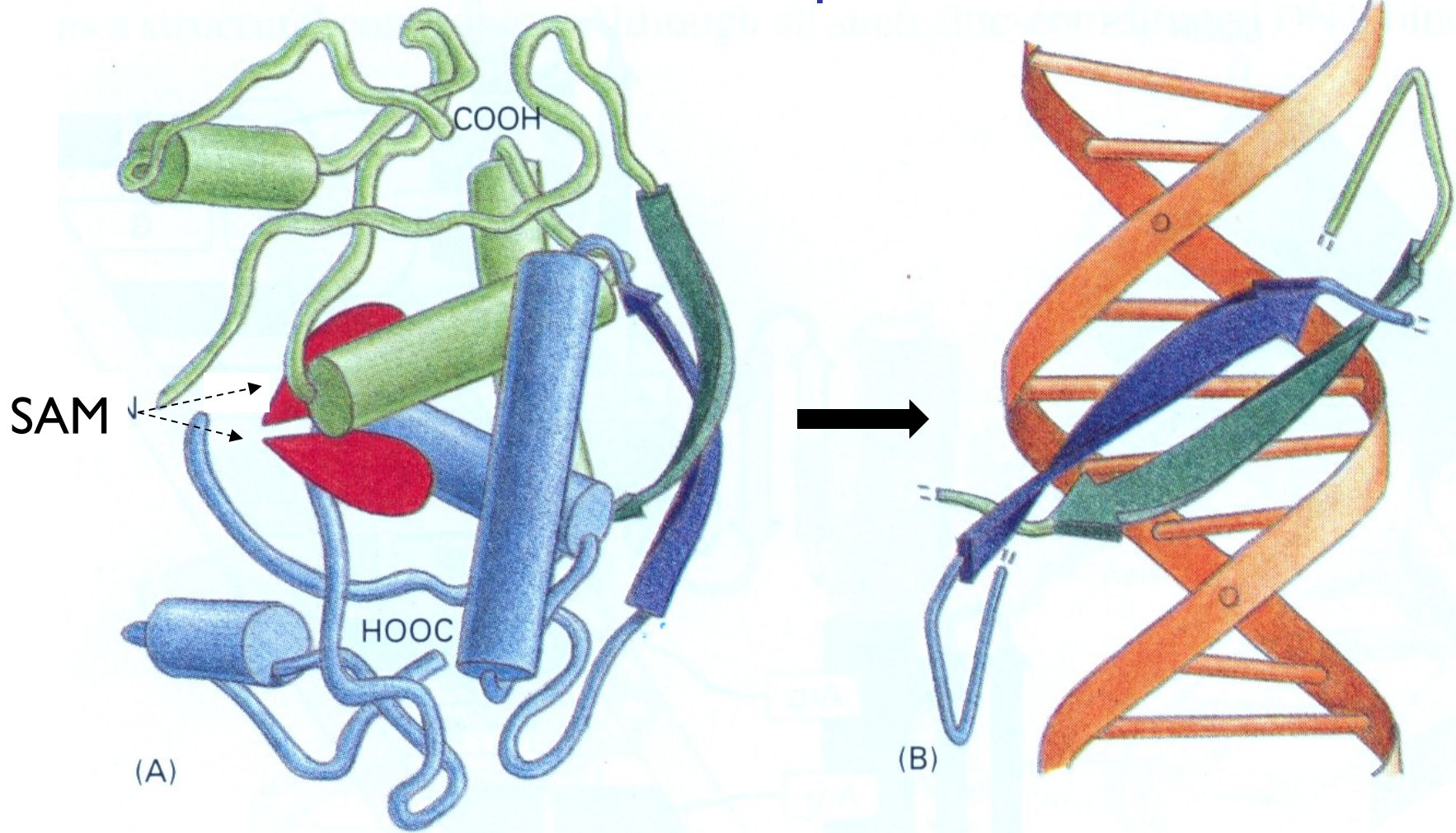
...

# Proteins Catalyze Biochemistry: Met Pathways



# Proteins Regulate Biochemistry:

## The MET Repressor

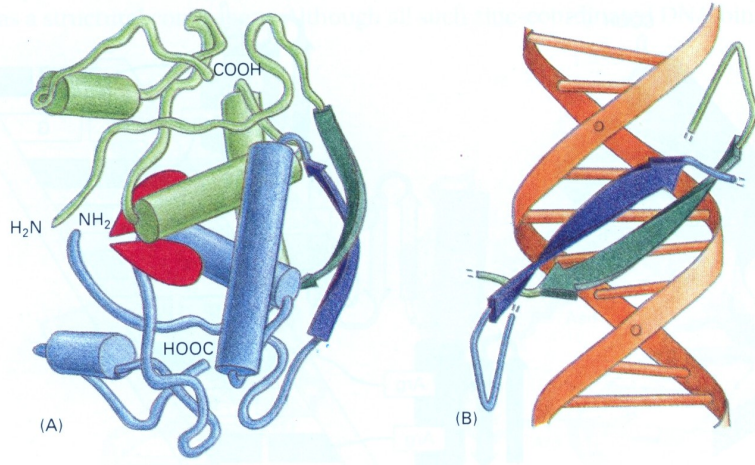


Protein

Alberts, et al, 3e.

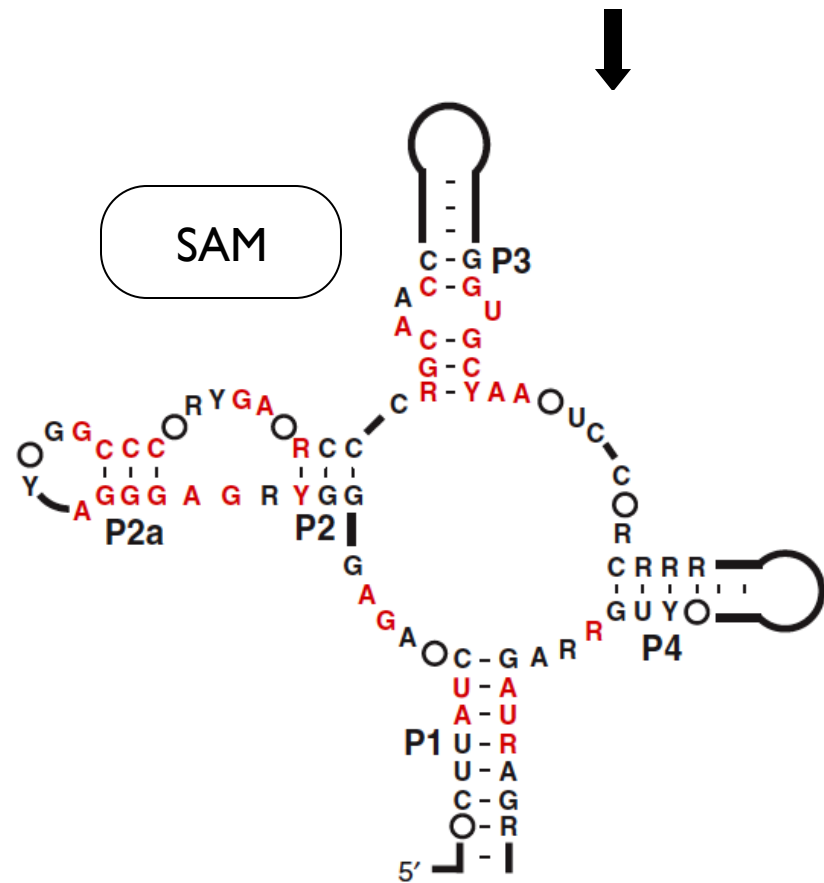
DNA

Alberts, et al, 3e.



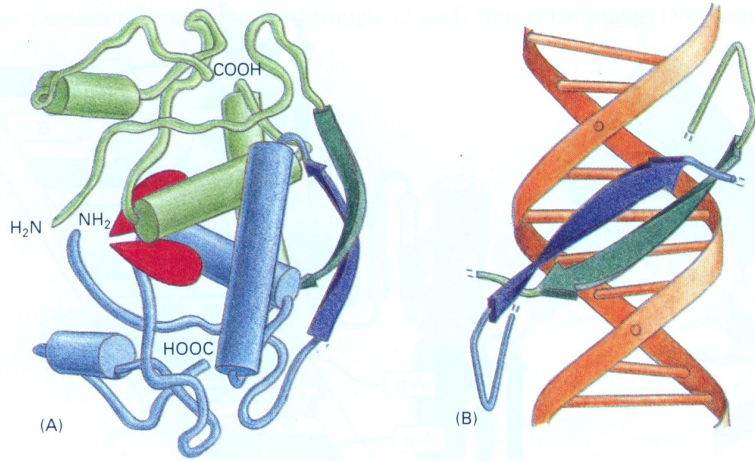
# Not the only way!

← Protein way      Riboswitch alternative



Grundy & Henkin, Mol. Microbiol 1998  
Epshtein, et al., PNAS 2003  
Winkler et al., Nat. Struct. Biol. 2003

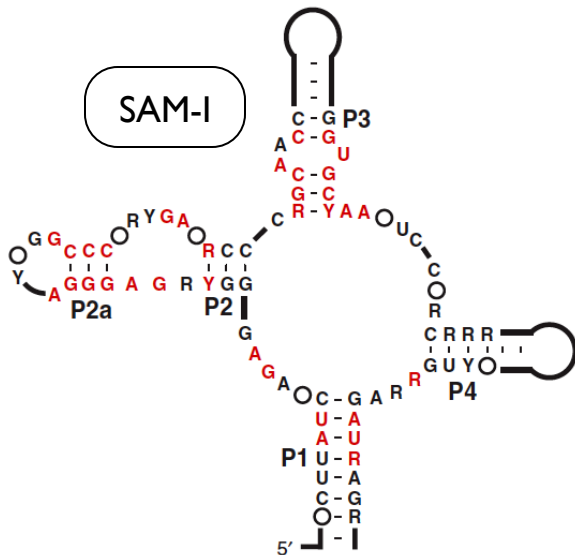
Alberts, et al, 3e.



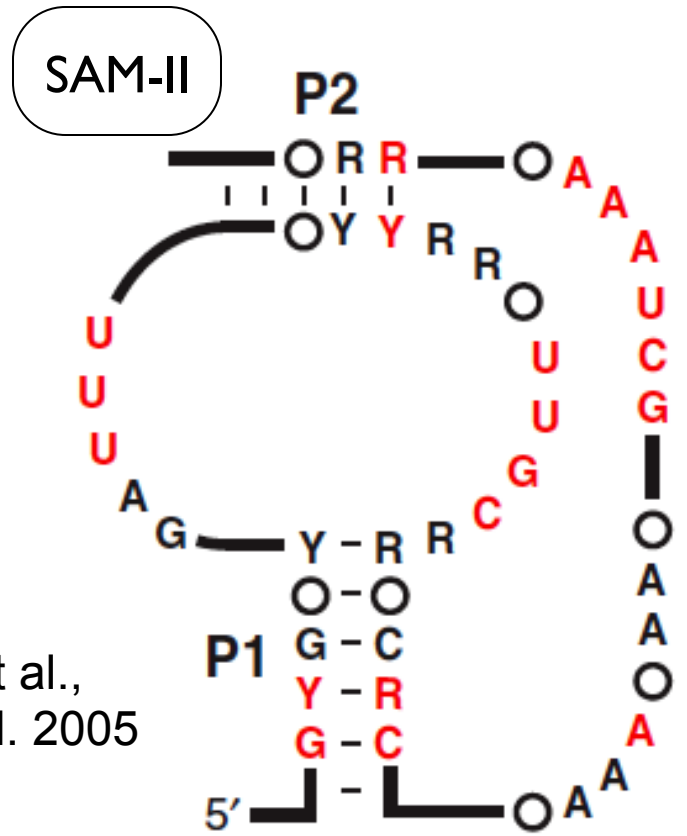
# Not the only way!

Protein way

Riboswitch alternatives

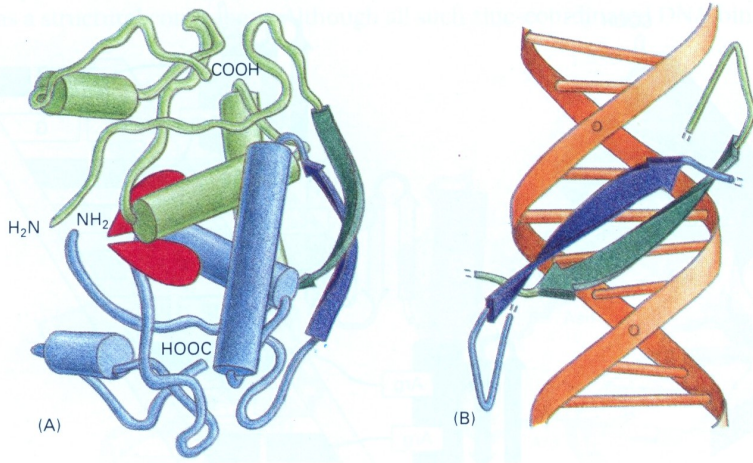


Grundy, Epshtein, Winkler et al., 1998, 2003



Corbino et al.,  
Genome Biol. 2005

Alberts, et al, 3e.



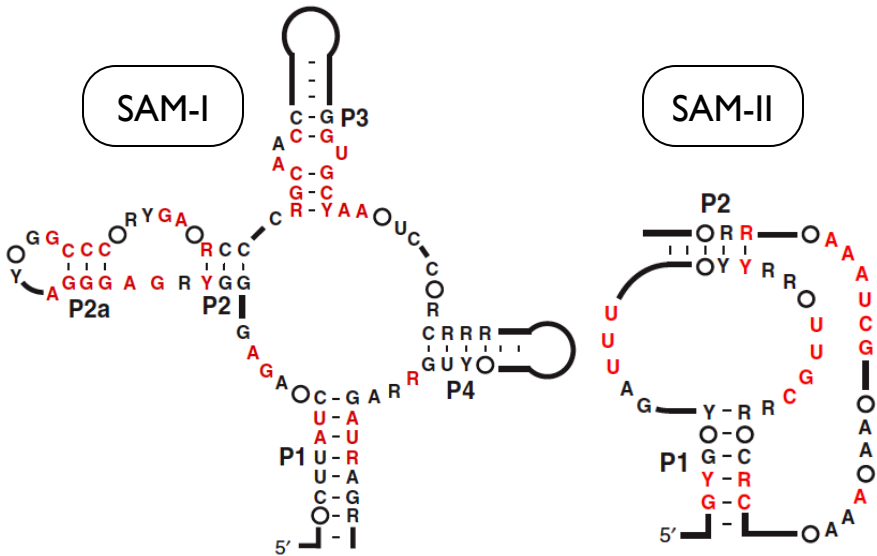
# Not the only way!

Protein way

Riboswitch alternatives



SAM-III



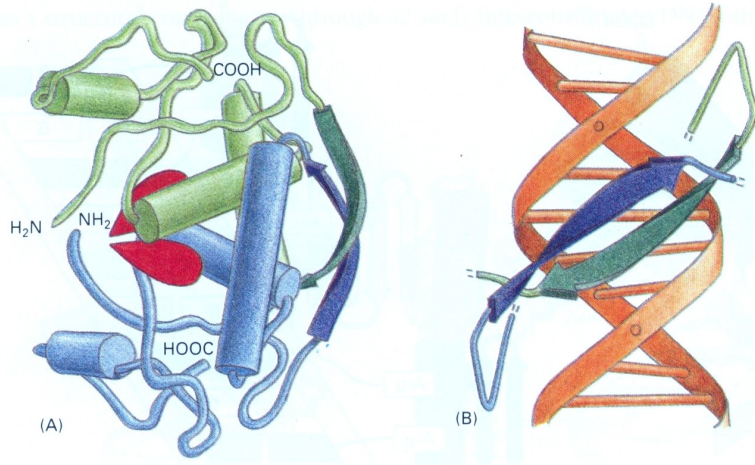
Grundy, Epshtein, Winkler et al., 1998, 2003

Corbino et al., Genome Biol. 2005

Fuchs et al., NSMB 2006



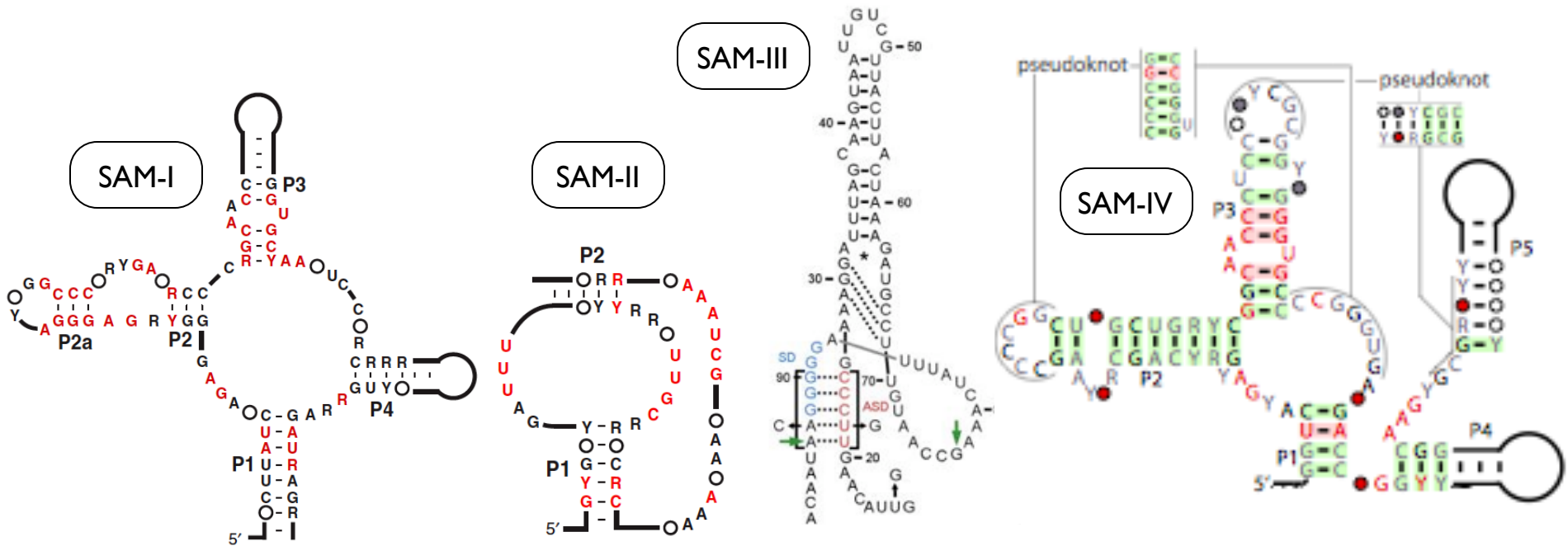
Alberts, et al, 3e.



# Not the only way!

Protein way

Riboswitch alternatives



Grundy, Epshtein, Winkler et al., 1998, 2003

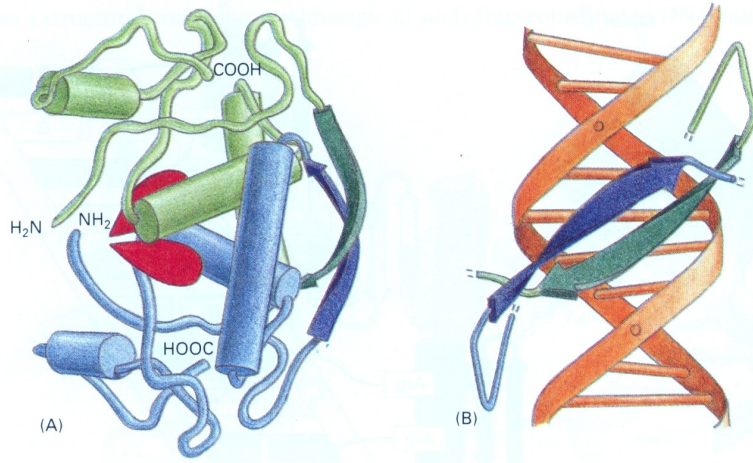
Corbino et al., Genome Biol. 2005

Fuchs et al., NSMB 2006

Weinberg et al., RNA 2008



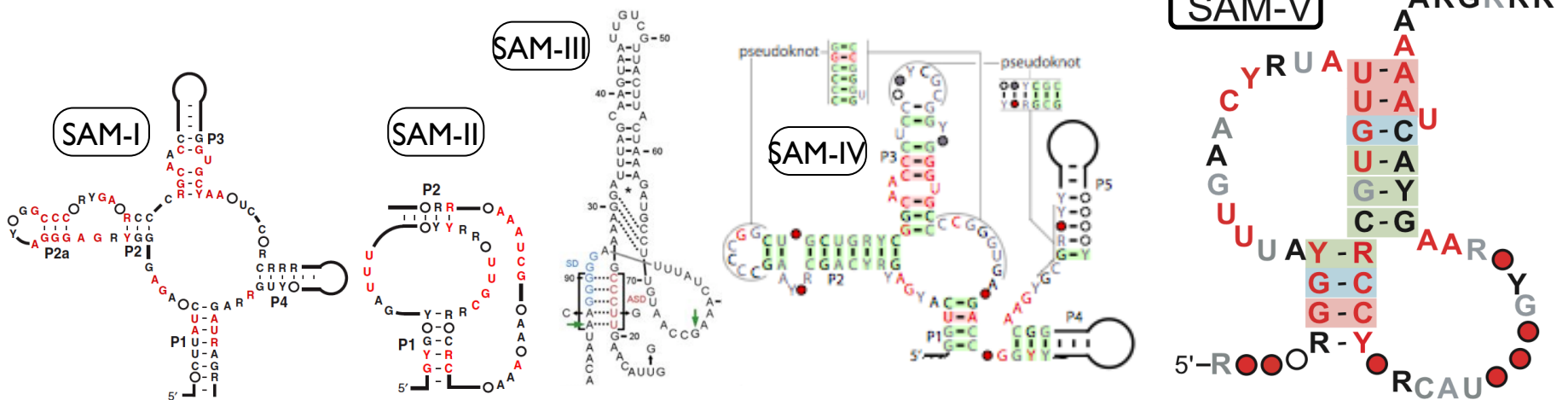
Alberts, et al, 3e.



Not the only way!

Protein way

Riboswitch alternatives



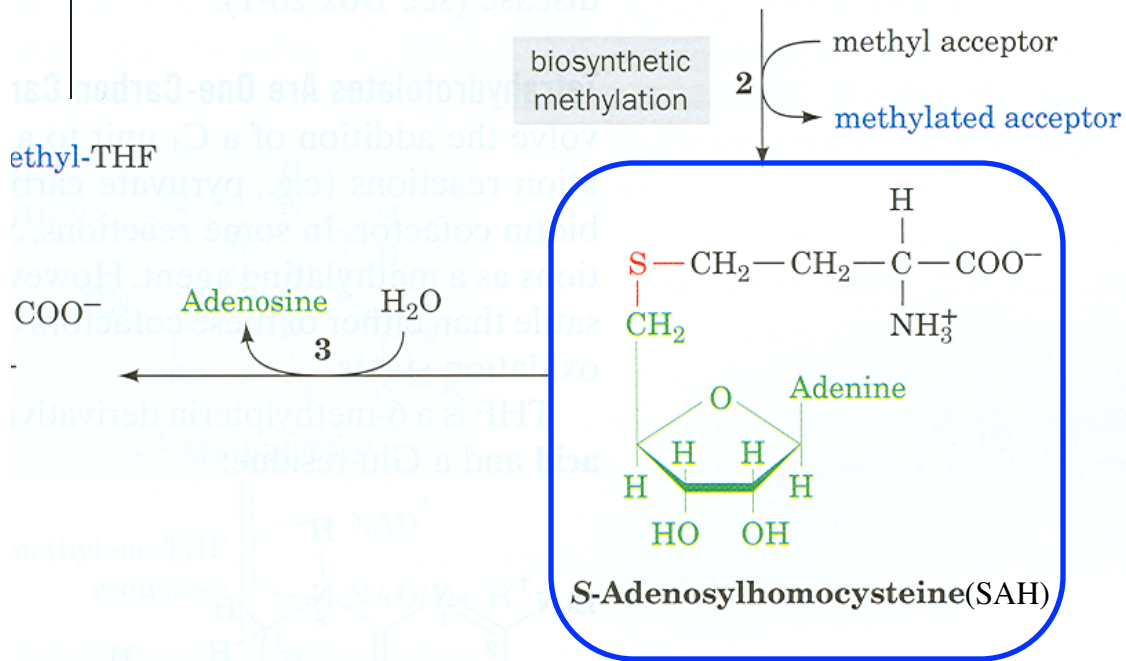
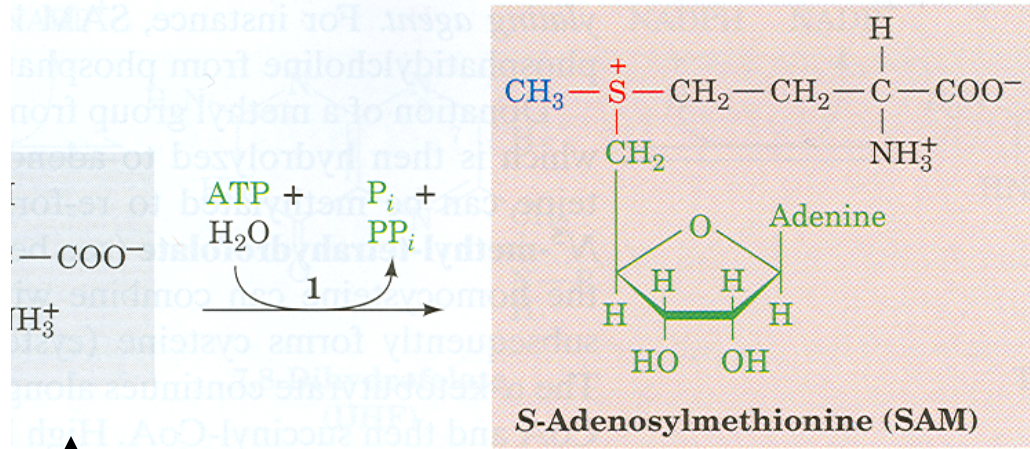
Grundy, Epshtein, Winkler et al., 1998, 2003

Corbino et al., Genome Biol. 2005

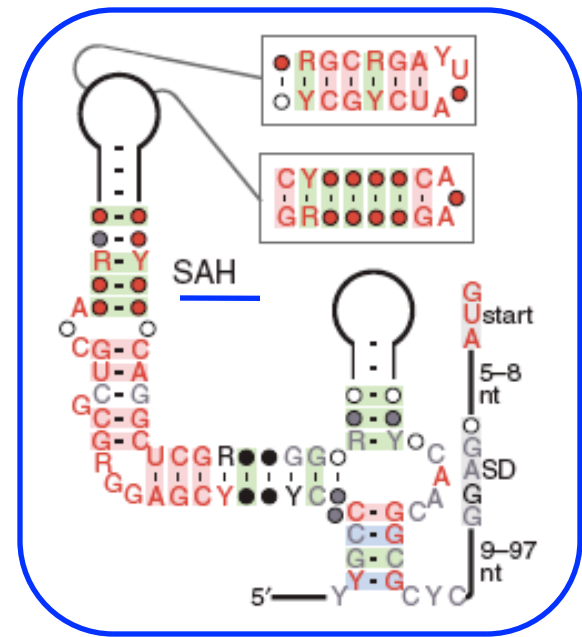
Fuchs et al., NSMB 2006

Weinberg et al., RNA 2008

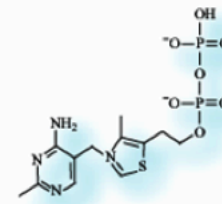
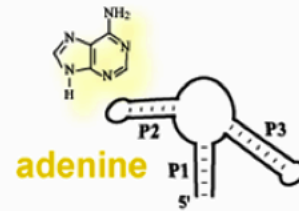
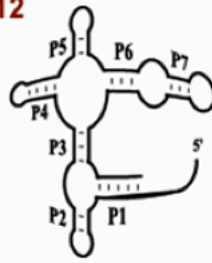
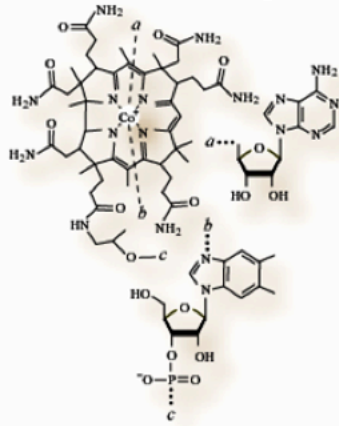
Meyer, et al., BMC Genomics 2009



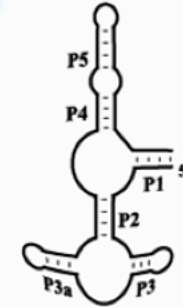
And in other bacteria, a riboswitch senses SAH



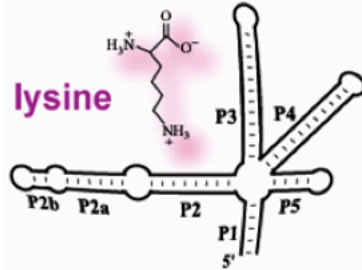
coenzyme B<sub>12</sub>



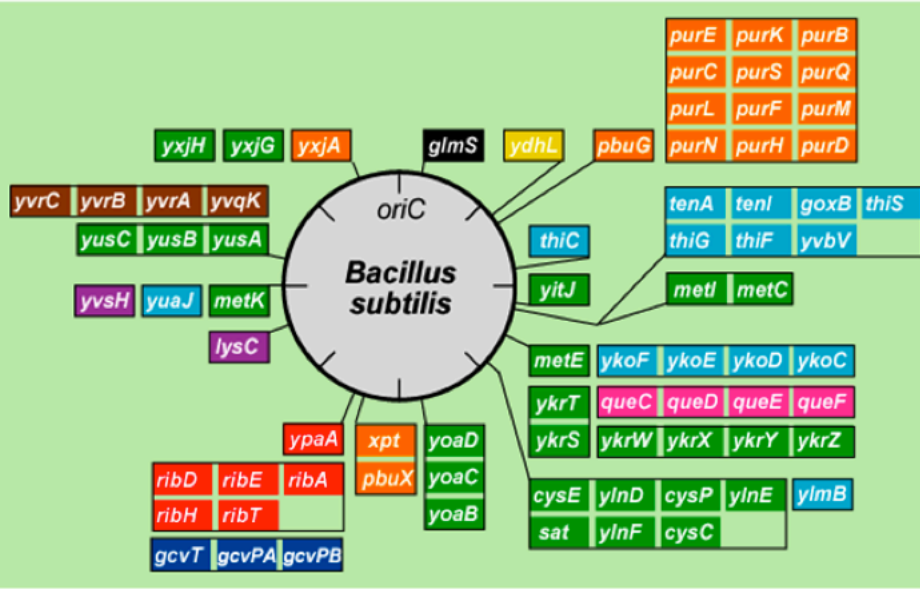
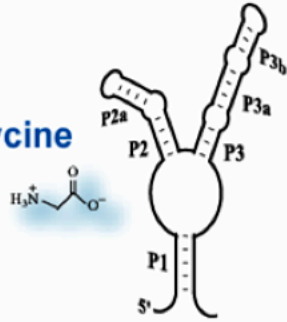
thiamine pyrophosphate



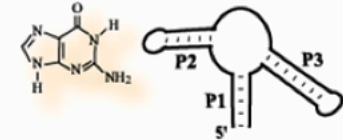
lysine



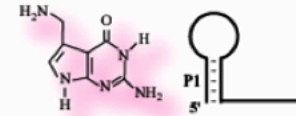
glycine



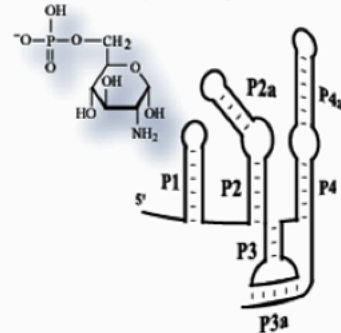
guanine



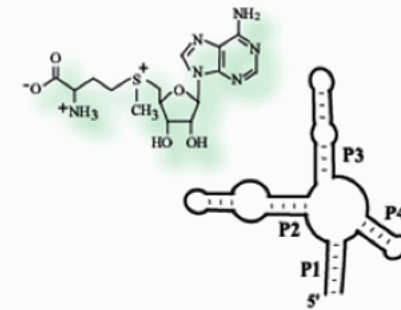
pre-queosine<sub>1</sub>



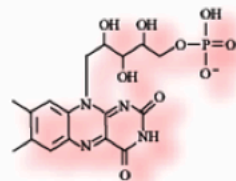
glucosamine-6-phosphate



S-adenosyl-methionine



flavin mononucleotide



# New Antibiotic Targets?

Old drugs, new understanding:

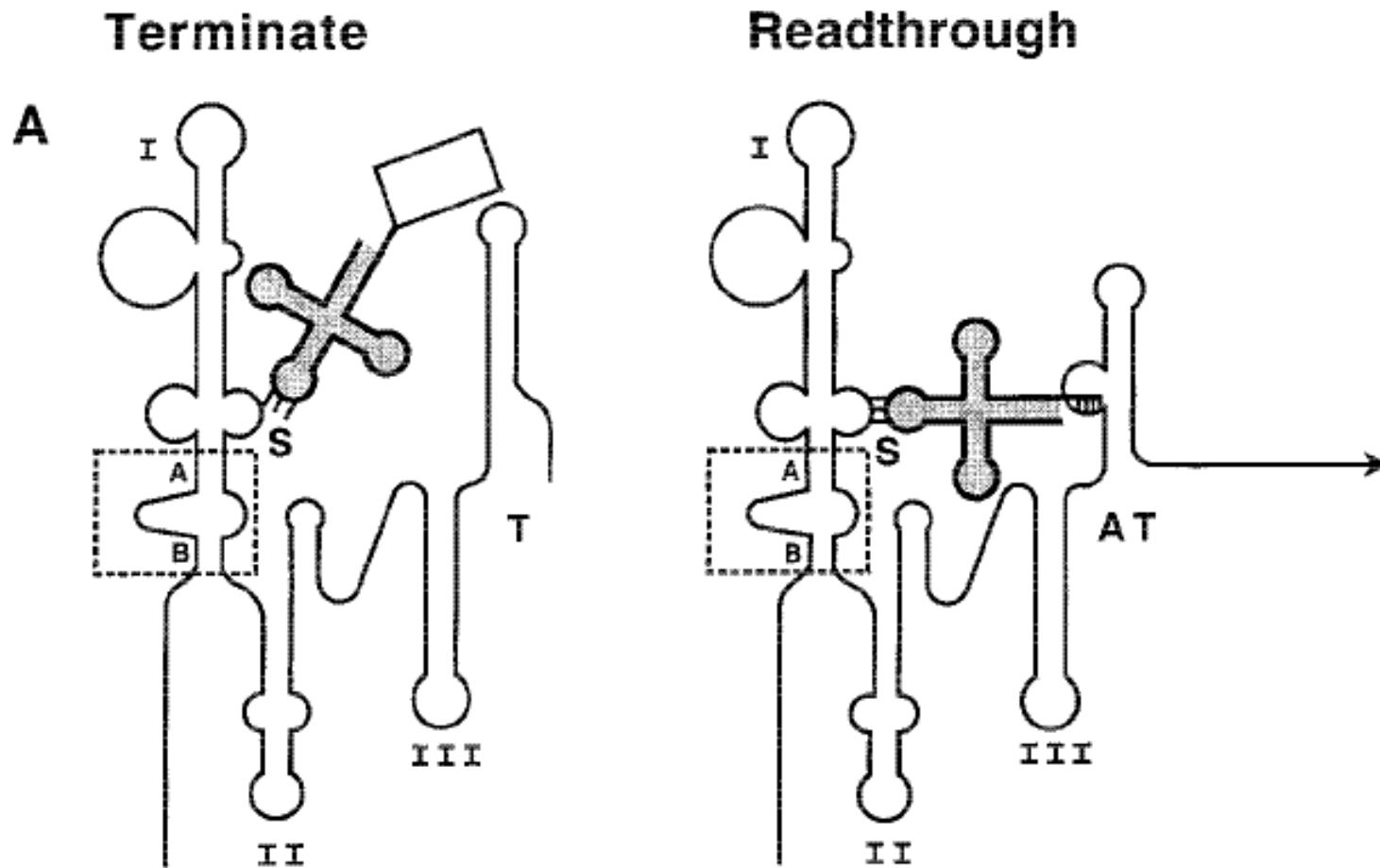
TPP riboswitch ~ pyriothiamine

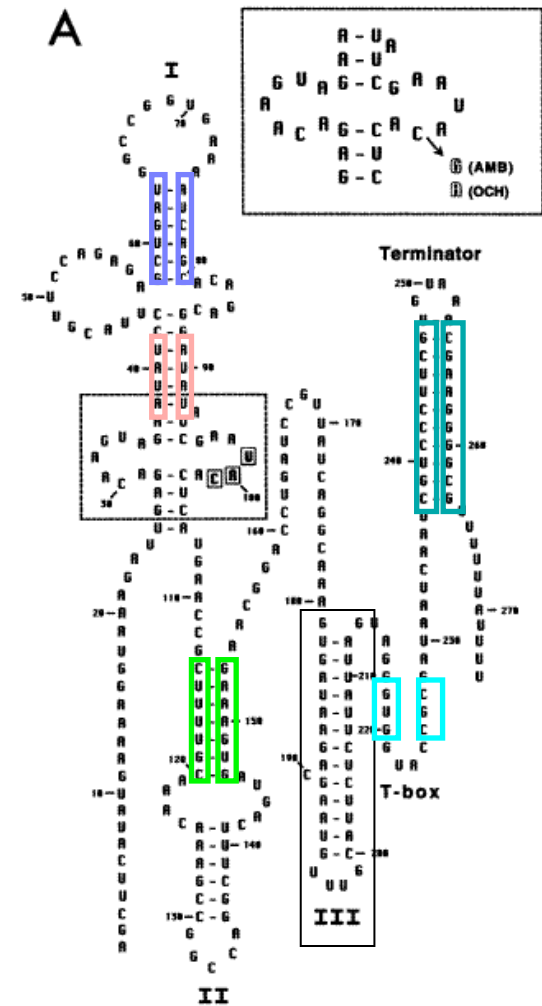
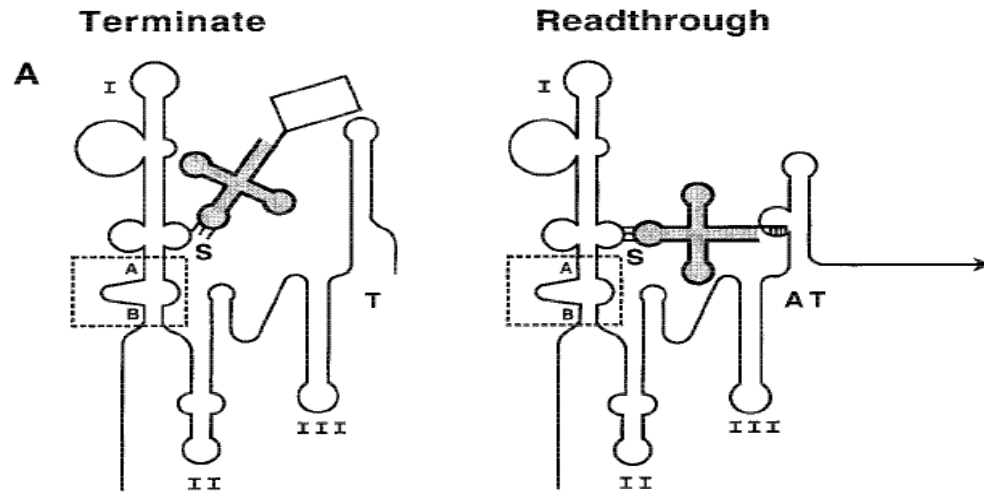
lysine riboswitch ~ L-aminoethylcysteine, DL-4-oxalysine

FMN riboswitch ~ roseoflavin

Potential advantages - no (known) human riboswitches, but often multiple copies in bacteria, so potentially efficacious with few side effects?

# ncRNA Example: T-boxes





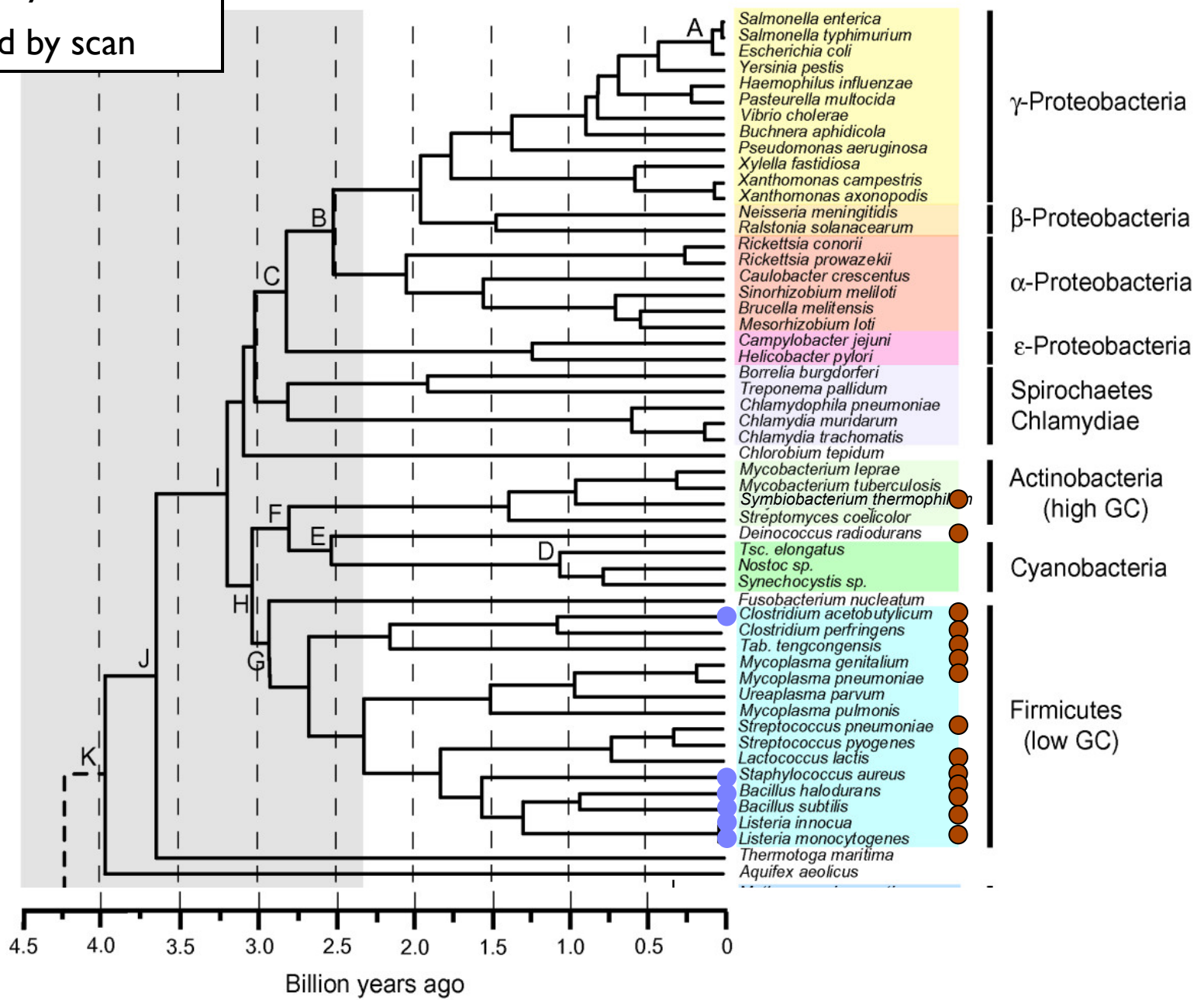
NC\_000964.1 **AUAUC**.CUUACGU..UCCAGAGAG**CUGAU**GGCCGGUGAAA.**AUCAGC**ACAGACGGAU**AUAU**  
 NC\_004722.1 **CAAAU**.GUCGUUUcUUAUAGAGAG**GUCGAU**GGUUGGUGGAA.**AUCGAU**AG..AAACA**GUUUG**  
 NC\_004193.1 **AAAAG**UAGAACCG.AUCUAGCGAA**AUUGAG**GAU.GGUGUGAG**CUCAGU**GC.GGAAAG**CUUUU**  
 NC\_003997.3 **CAAAU**.GUCGUUUcUUAUAGAGAG**GUCGAU**GGUUGGUGGAA.**AUCGAU**AG..AAACA**GUUUG**

NC\_000964.1 CGAA..UACACUCAUGAACCG**CUUUUGC**AAACAAAGccggccaggcuuucAGUA.**GUGAAAG**  
 NC\_004722.1 UGAA..UCCAUCCUGGAAU..**GGAAUGU**GGAAUAUCUuuuggauu....AGUAAG**GCAUUC**  
 NC\_004193.1 AGAAAUC.ACUCUUGAGUU.**UUCAUUAC**GAAA..CA.....AGUA**GUAUUGGA**  
 NC\_003997.3 UGAA..UCCAUCCUGGAAU..**GGAAUGU**GGAAUAUCUuuuugauu....AGUAA**ACAUUC**

NC\_000964.1 acGGAC.CUGAUCCGUUAUCAGGCAAAG**GUG**GUAC**CGC**GAUAAUCA**AAU**CGUCCCUUC**G**UGUAAa**CGAAGGGGCGUUU**  
 NC\_004722.1 .CGGUG.AAGAGCCGUUAUU...UCu**AGUG**GCAA**CGCGG**..GUU**AACUCCCGUCCCU**UUUAUu**AGGGACGGGAGUU**  
 NC\_004193.1 .CGGUUcAUC.UCCGUUAUCGAUCUUAG**GUG**GUAC**CGCGA**.....**GUCUUCU**CGUCCCUUUU..**GGGAU**AGAAGGC  
 NC\_003997.3 .CGGUG.AAGAGCCGUUAUU...UCu**AGUG**GCAA**CGCGG**..GUU**AACUCCCGUCCCU**UUUAUu**AGGGACGGGAGUU**

● Used by CMfinder  
● Found by scan

*Chloroflexus aurantiacus* ● Chloroflexi  
*Geobacter metallireducens* ●  $\delta$ -Proteobacteria  
*Geobacter sulphurreducens* ●



# ncRNA Example: 6S

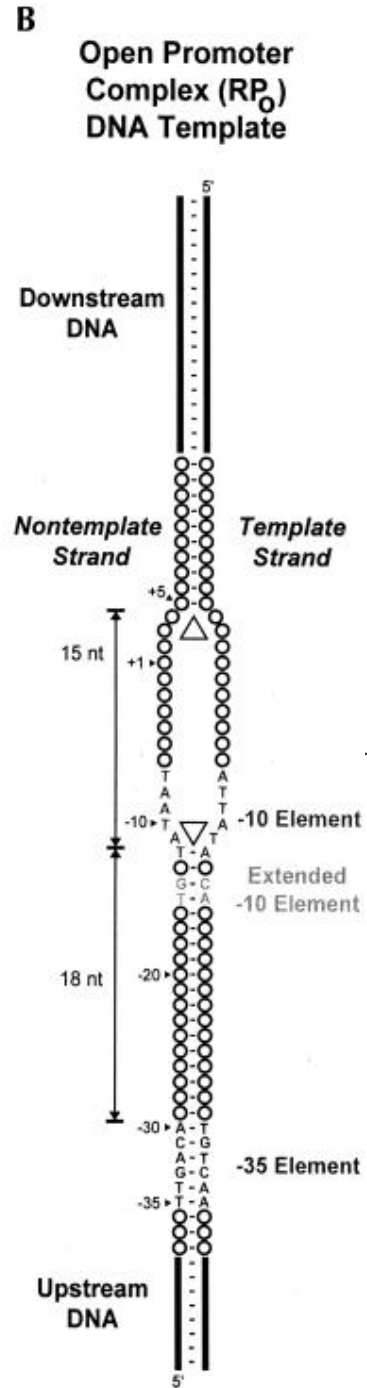
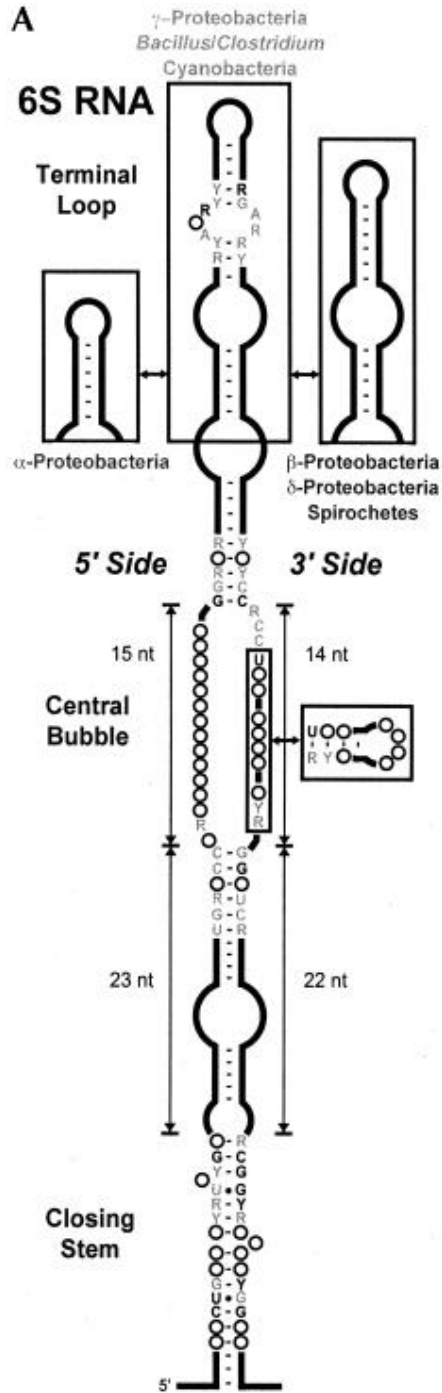
medium size (175nt)

structured

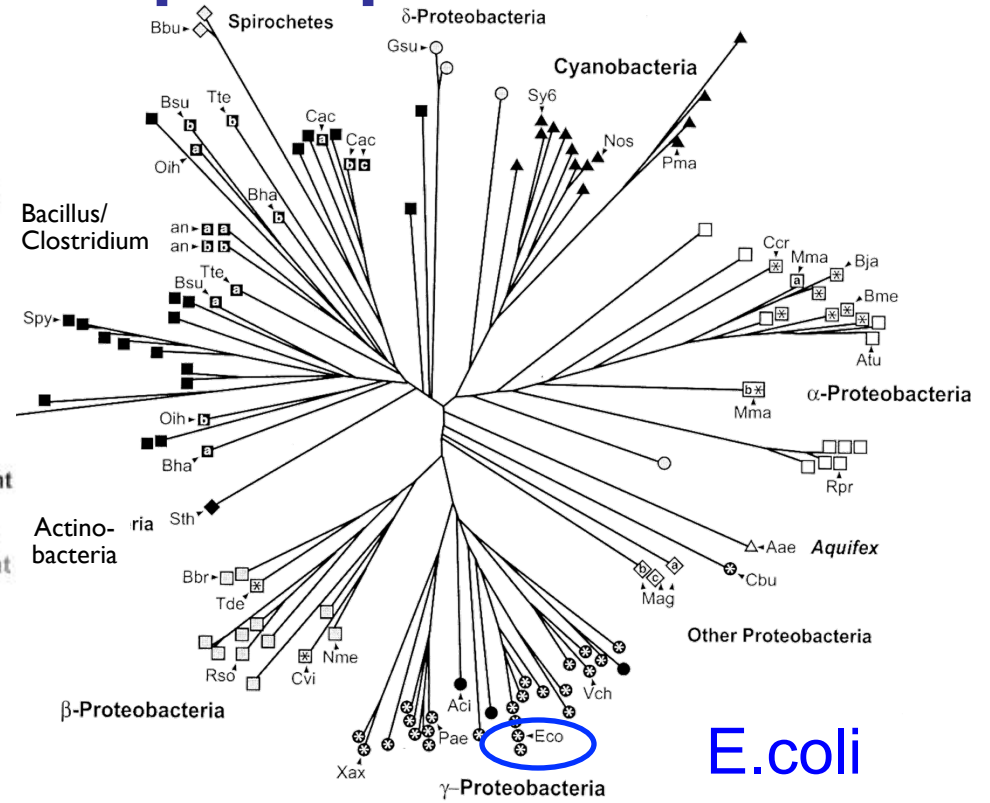
highly expressed in *E. coli* in certain growth conditions

sequenced in 1971; function unknown for 30 years





# 6S mimics an open promoter



**E.coli**

Barrick et al. *RNA* 2005

Trotochaud et al. *NSMB* 2005

Willkomm et al. *NAR* 2005

# Summary: RNA in Bacteria

Widespread, deeply conserved, structurally sophisticated, functionally diverse, biologically important uses for ncRNA throughout prokaryotic world.

Regulation of MANY genes involves RNA

In some species, we know identities of more riboregulators than protein regulators

Dozens of classes & thousands of new examples in just last 5-10 years

# Vertebrates

Bigger, more complex genomes

<2% coding

But >5% conserved in sequence?

And 50-90% transcribed?

And *structural* conservation, if any, invisible

(without proper alignments, etc.)

What's going on?

# Vertebrate ncRNAs

mRNA, tRNA, rRNA, ... of course

PLUS:

snRNA, spliceosome, snoRNA, telomerase,  
microRNA, RNAi, SECIS, IRE, piwi-RNA,  
XIST (X-inactivation), ribozymes, ...

# MicroRNA

1st discovered 1992 in *C. elegans*

2nd discovered 2000, also *C. elegans*

*and* human, fly, everything between – basically all multi-celled plants & animals

21-23 nucleotides

literally fell off ends of gels

Hundreds now known in human

may regulate 1/3-1/2 of all genes

development, stem cells, cancer, infectious disease,

...

# siRNA

2006 Nobel Prize  
Fire & Mello

“Short Interfering RNA”

Also discovered in *C. elegans*

Possibly an antiviral defense, shares  
machinery with miRNA pathways

Allows artificial repression of most genes in  
most higher organisms

Huge tool for biology & biotech

# Human Predictions

## Evofold

S Pedersen, G Bejerano, A Siepel, K Rosenbloom, K Lindblad-Toh, ES Lander, J Kent, W Miller, D Haussler, "Identification and classification of conserved RNA secondary structures in the human genome." [PLoS Comput. Biol., 2, #4 \(2006\) e33.](#)

48,479 candidates (~70% FDR?)

## RNAz

S Washietl, IL Hofacker, M Lukasser, A Huttenhofer, F Stadler, "Mapping of conserved RNA secondary structures predicts thousands of functional noncoding RNAs in the human genome." [Nat. Biotechnol., 23, #11 \(2005\) 1383-90.](#)  
30,000 structured RNA elements  
1,000 conserved across all vertebrates.  
~1/3 in introns of known genes, ~1/6 in UTRs  
~1/2 located far from any known gene

## FOLDALIGN

E Torarinsson, M Sawera, JH Havgaard, M Fredholm, J Gorodkin, "Thousands of corresponding human and mouse genomic regions unalignable in primary sequence contain common RNA structure." [Genome Research, 16, #7 \(2006\) 885-9.](#)

1800 candidates from 36970 (of 100,000) pairs

## CMfinder

Torarinsson, Yao, Wiklund, Bramsen, Hansen, Kjems, Tommerup, Ruzzo and Gorodkin. Comparative genomics beyond sequence based alignments: RNA structures in the ENCODE regions.

[Genome Research, Feb 2008, 18\(2\):242-251](#) PMID: [18096747](#)

6500 candidates in ENCODE alone (better FDR, but still high)

Thousands of Predictions

# Bottom line?

A significant number of “one-off” examples

Extremely wide-spread ncRNA expression

At a minimum, a vast evolutionary substrate

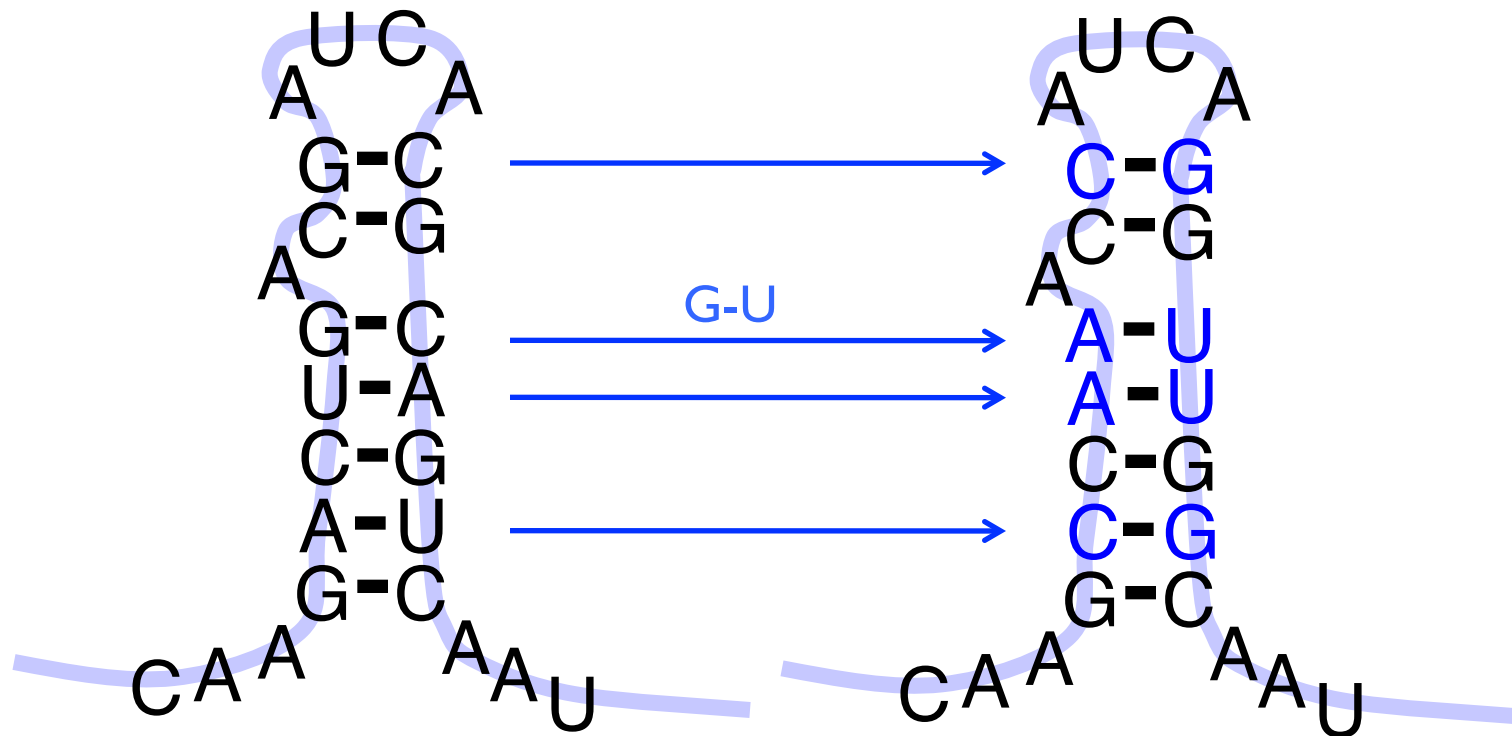
New technology (e.g. RNAseq) exposing  
more

How do you recognize an interesting one?

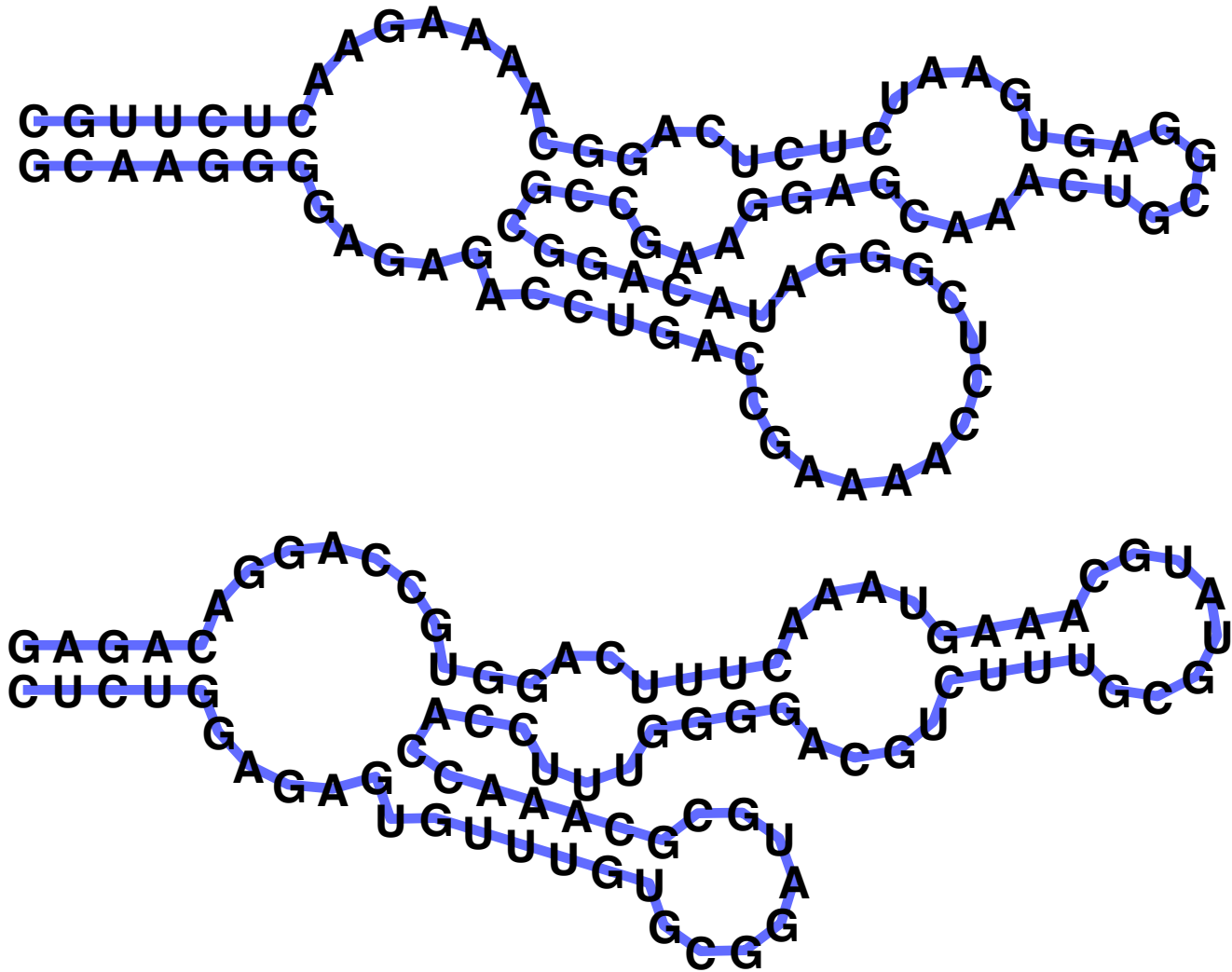
Conserved secondary structure



# RNA Secondary Structure: can be fixed while sequence evolves



# Why is RNA hard to deal with?



A: *Structure* often more important than *sequence*<sub>103</sub>

# Structure Prediction

# RNA Structure

Primary Structure: Sequence

Secondary Structure: Pairing

Tertiary Structure: 3D shape

# RNA Pairing

## Watson-Crick Pairing

C - G

~ 3 kcal/mole

A - U

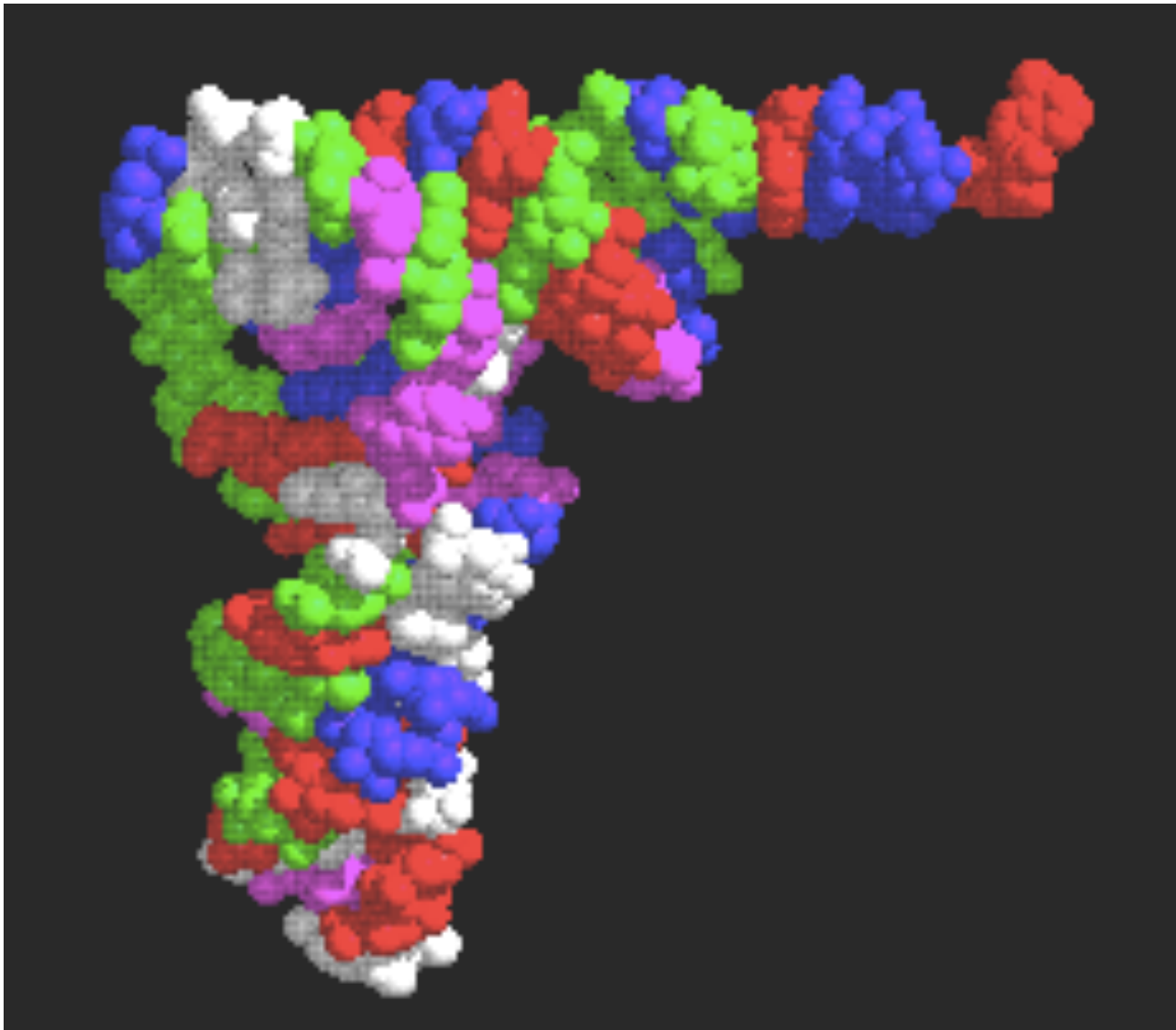
~ 2 kcal/mole

“Wobble Pair” G - U

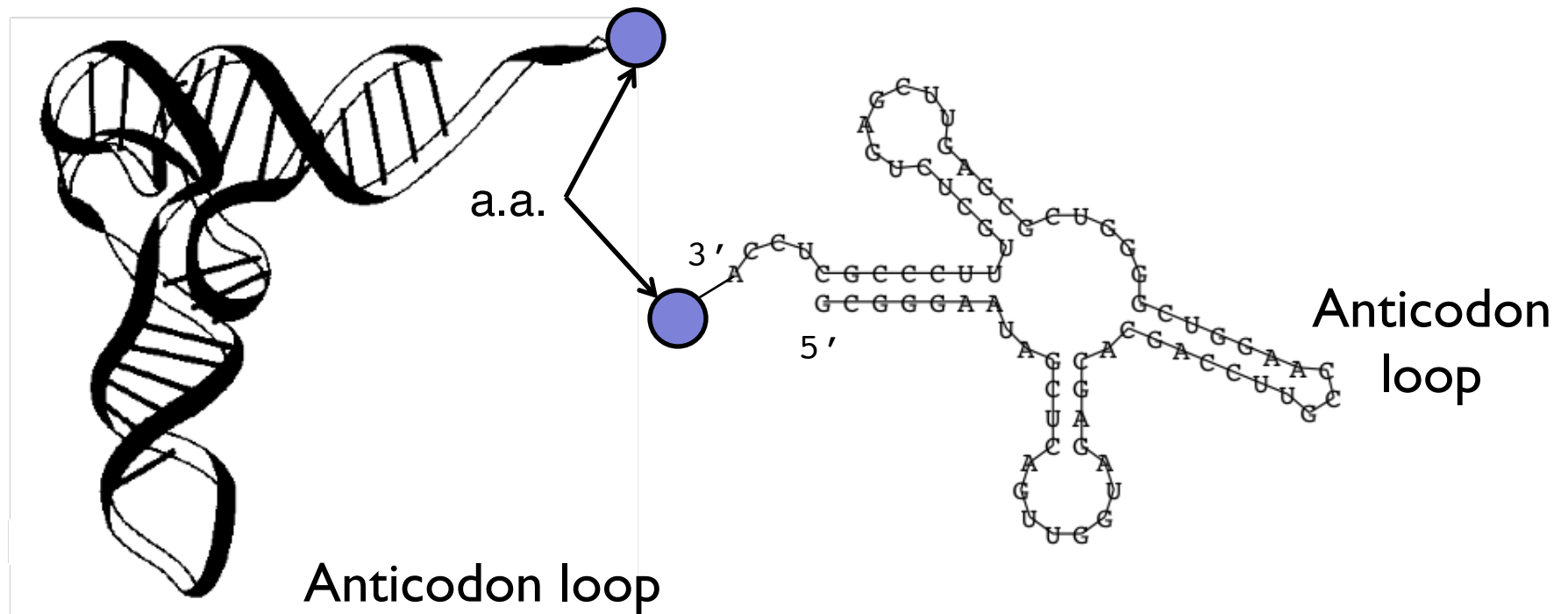
~ 1 kcal/mole

Non-canonical Pairs (esp. if modified)

# tRNA 3d Structure



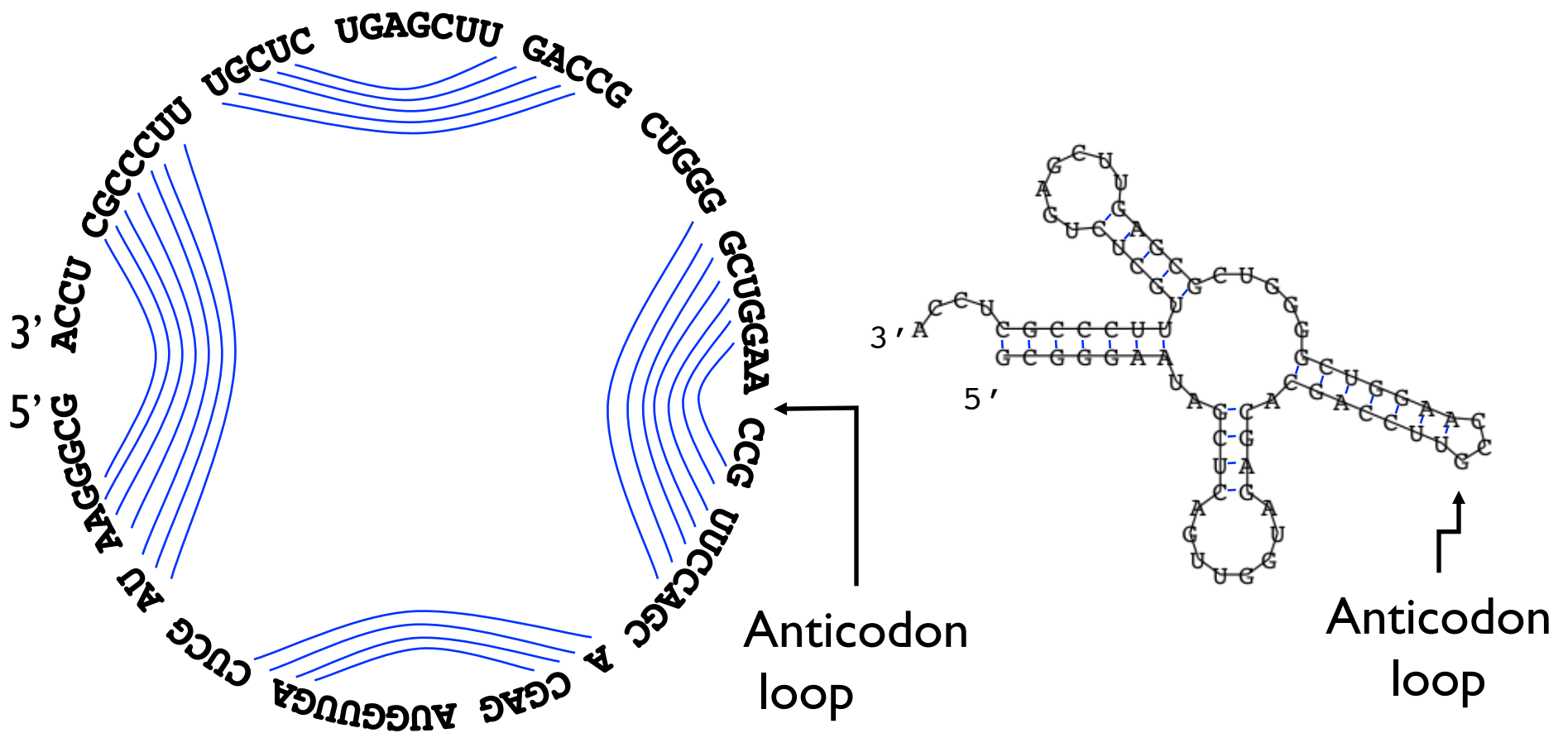
# tRNA - Alt. Representations



**Figure 1:** a) The spatial structure of the phenylalanine tRNA from yeast

b) The secondary structure extracts the most important information about the structure, namely the pattern of base pairings.

# tRNA - Alt. Representations





# Definitions

Sequence  $5' r_1 r_2 r_3 \dots r_n 3'$  in  $\{A, C, G, T/U\}$

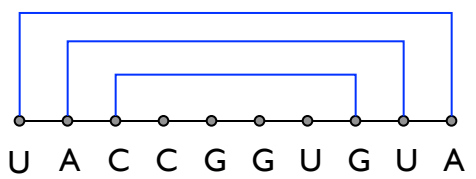
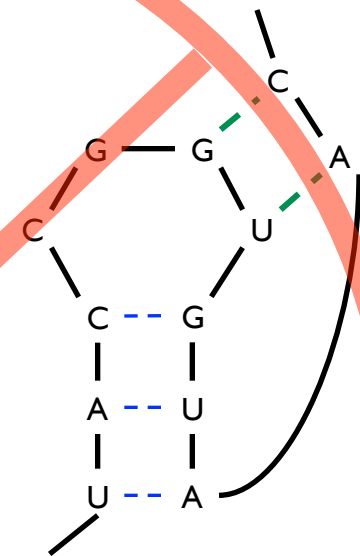
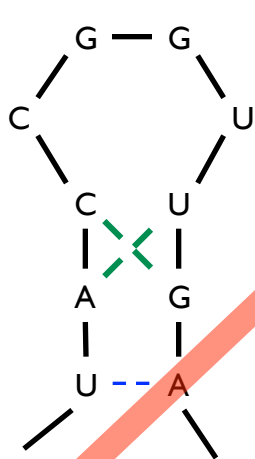
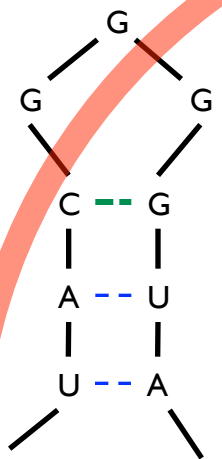
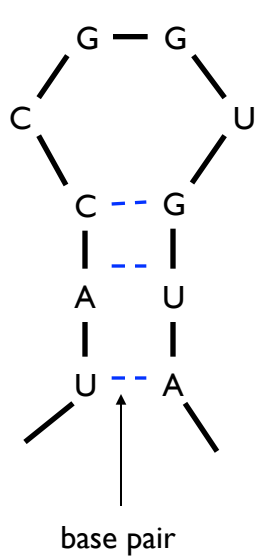
A **Secondary Structure** is a set of pairs  $i \bullet j$  s.t.

$i < j-4$ , and  $\}$  no sharp turns

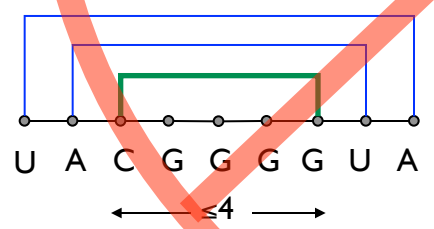
if  $i \bullet j$  &  $i' \bullet j'$  are two different pairs with  $i \leq i'$ , then

$j < i'$ , or  $\}$  2nd pair follows 1st, or is nested within it;  
 $i < i' < j' < j$   $\}$  no "pseudoknots."

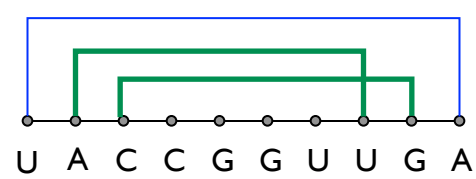
# RNA Secondary Structure: Examples



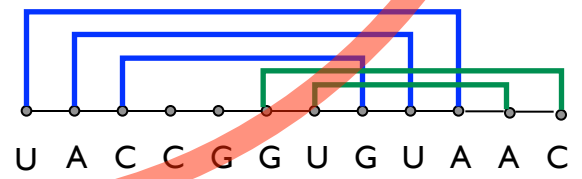
ok



sharp turn

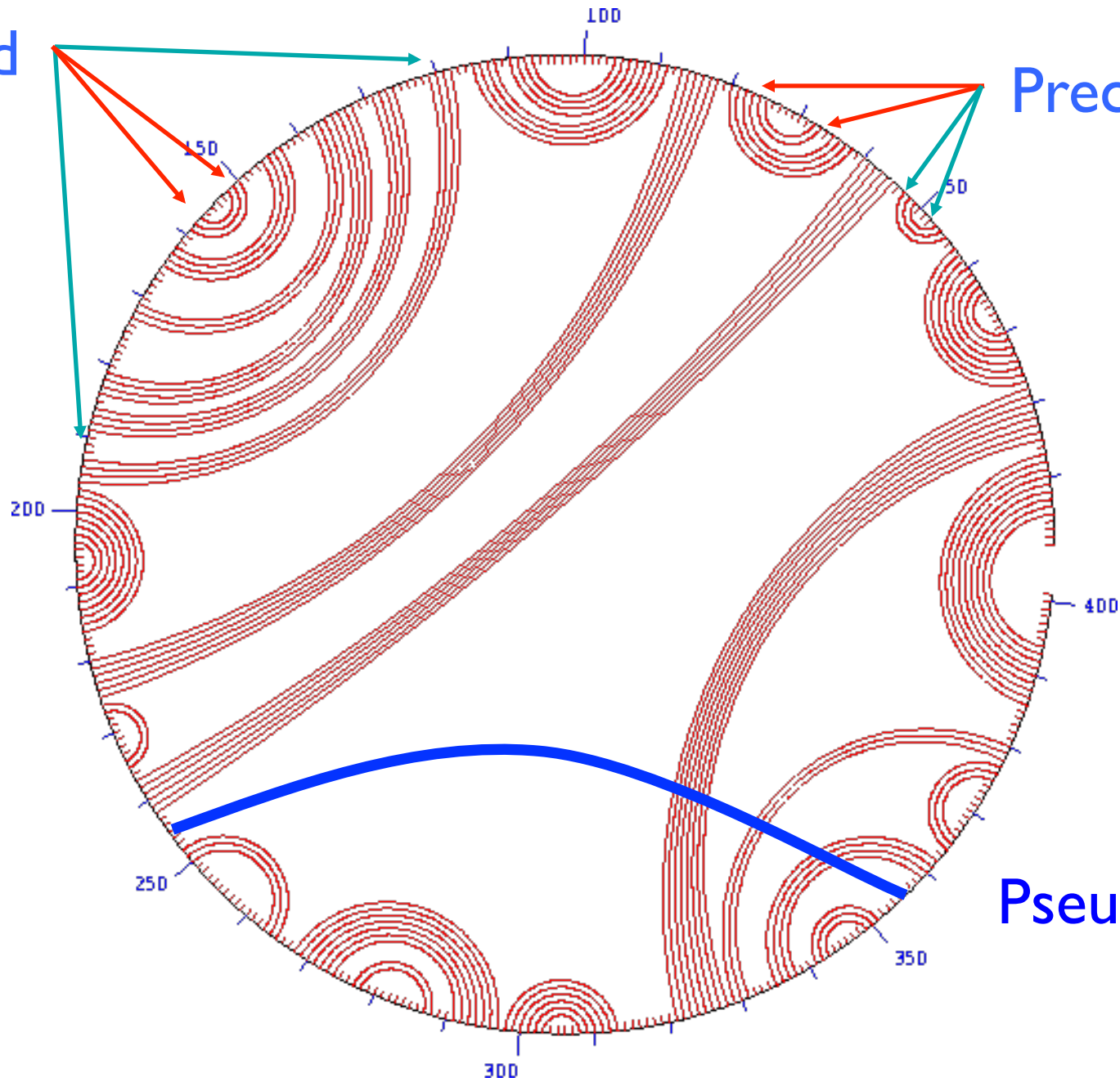


crossing



Nested

Precedes



Pseudoknot

# Approaches to Structure Prediction

## Maximum Pairing

- + works on single sequences
- + simple
- too inaccurate

## Minimum Energy

- + works on single sequences
- ignores pseudoknots
- only finds “optimal” fold

## Partition Function

- + finds all folds
- ignores pseudoknots

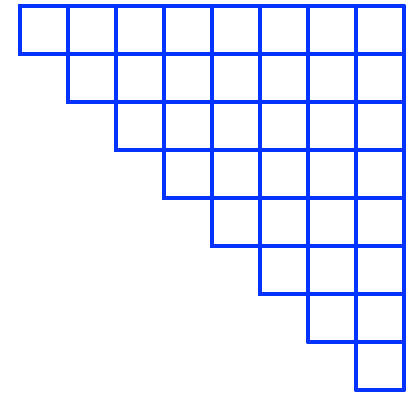
# Nussinov: Max Pairing

$B(i,j) = \#$  pairs in optimal pairing of  $r_i \dots r_j$

$B(i,j) = 0$  for all  $i, j$  with  $i \geq j-4$ ; otherwise

$B(i,j) = \max$  of:

$$\left\{ \begin{array}{l} B(i,j-1) \\ \max \{ B(i,k-1) + 1 + B(k+1,j-1) \mid \\ \quad i \leq k < j-4 \text{ and } r_k - r_j \text{ may pair} \} \end{array} \right.$$

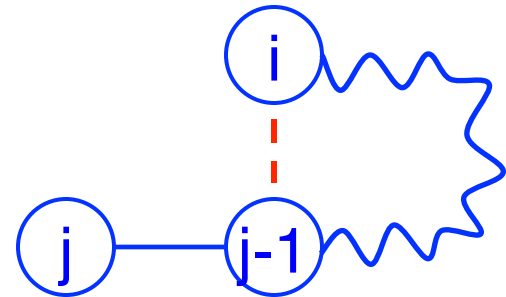


# “Optimal pairing of $r_i \dots r_j$ ”

## Two possibilities

j Unpaired:

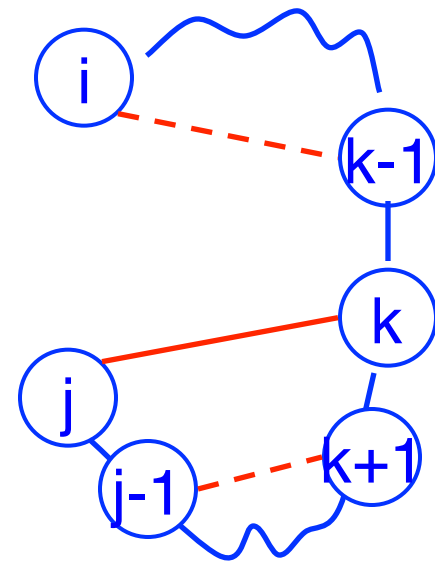
Find best pairing of  $r_i \dots r_{j-1}$



j Paired (with some k):

Find best  $r_i \dots r_{k-1}$  +

best  $r_{k+1} \dots r_{j-1}$  **plus 1**



Why is it slow?

Why do pseudoknots matter?

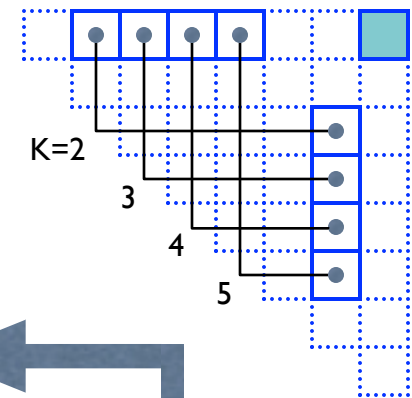
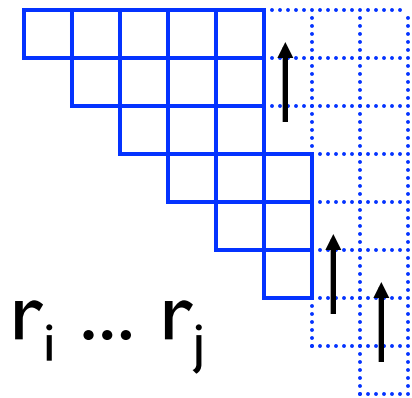
# Nussinov: A Computation Order

$B(i,j) = \#$  pairs in optimal pairing of  $r_i \dots r_j$

$B(i,j) = 0$  for all  $i, j$  with  $i \geq j-4$ ; otherwise

$B(i,j) = \max$  of:

$$\left\{ \begin{array}{l} B(i,j-1) \\ \max \{ B(i,k-1) + 1 + B(k+1,j-1) \mid \\ \quad i \leq k < j-4 \text{ and } r_k - r_j \text{ may pair} \} \end{array} \right.$$



Time:  $O(n^3)$

# Which Pairs?

Usual dynamic programming “trace-back” tells you *which* base pairs are in the optimal solution, not just how many



# Approaches to Structure Prediction

## Maximum Pairing

- + works on single sequences
- + simple
- too inaccurate

## Minimum Energy

- + works on single sequences
- ignores pseudoknots
- only finds “optimal” fold

## Partition Function

- + finds all folds
- ignores pseudoknots


# Pair-based Energy Minimization


$E(i,j)$  = energy of *pairs* in optimal pairing of  $r_i \dots r_j$

$E(i,j) = \infty$  for all  $i, j$  with  $i \geq j-4$ ; otherwise

$E(i,j) = \min$  of:

$$\begin{cases} E(i,j-1) \\ \min \{ E(i,k-1) + e(r_k, r_j) + E(k+1,j-1) \mid i \leq k < j-4 \} \end{cases}$$

 energy of  $k-j$  pair

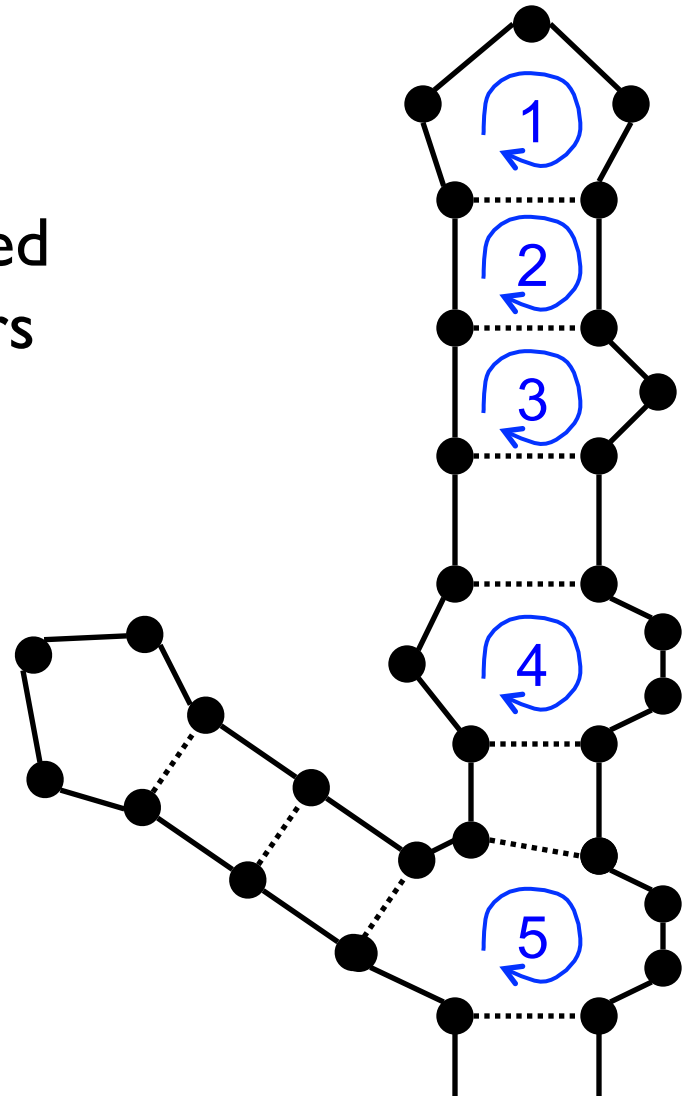
Time:  $O(n^3)$  

# Loop-based Energy Minimization

Detailed experiments show it's more accurate to model based on *loops*, rather than just pairs

## Loop types

1. Hairpin loop
2. Stack
3. Bulge
4. Interior loop
5. Multiloop



# Zuker: Loop-based Energy, I

$W(i,j)$  = energy of optimal pairing of  $r_i \dots r_j$

$V(i,j)$  = as above, but forcing pair  $i \bullet j$

$W(i,j) = V(i,j) = \infty$  for all  $i, j$  with  $i \geq j-4$

$W(i,j) = \min( W(i,j-1),$   
 $\min \{ W(i,k-1) + V(k,j) \mid i \leq k < j-4 \}$   
)

# Zuker: Loop-based Energy, II

hairpin    stack

bulge/  
interior    multi-  
loop

$$V(i,j) = \min(\text{eh}(i,j), \text{es}(i,j)+V(i+1,j-1), \text{VBI}(i,j), \text{VM}(i,j))$$

$$\text{VM}(i,j) = \min \{ W(i,k)+W(k+1,j) \mid i < k < j \}$$

$$\text{VBI}(i,j) = \min \{ \text{ebi}(i,j,i',j') + V(i', j') \mid$$

$$i < i' < j' < j \ \& \ i'-i+j-j' > 2 \}$$

bulge/  
interior

Time:  $O(n^4)$

$O(n^3)$  possible if  $\text{ebi}(\cdot)$  is “nice”

# Energy Parameters

Q. Where do they come from?

A1. Experiments with carefully selected synthetic RNAs

A2. Learned algorithmically from trusted alignments/structures [Andronescu et al., 2007]

# Single Seq Prediction Accuracy

Mfold, Vienna,... [Nussinov, Zuker, Hofacker, McCaskill]

Latest estimates suggest ~50-75% of base pairs predicted correctly in sequences of up to ~300nt

Definitely useful, but obviously imperfect

# Approaches, II

## Comparative sequence analysis

- + handles all pairings (potentially incl. pseudoknots)
- requires several (many?) aligned, appropriately diverged sequences

## Stochastic Context-free Grammars

Roughly combines min energy & comparative, but no pseudoknots

## Physical experiments (x-ray crystallography, NMR)



# Summary

RNA has important roles beyond mRNA

Many unexpected recent discoveries

Structure is critical to function

True of proteins, too, but they're easier to find from sequence alone due, e.g., to codon structure, which RNAs lack

RNA secondary structure can be predicted (to useful accuracy) by dynamic programming

Next: RNA “motifs” (seq + 2-ary struct) well-captured by “covariance models”