

## Shading

## Reading

- ◆ Foley, Section 16.1

## Introduction

So far, we've talked exclusively about geometry.

- ◆ What is the shape of an object?
- ◆ How do I place it in a virtual 3D space?
- ◆ How do I know which pixels it covers?
- ◆ How do I know which of the pixels I should actually draw?

Once we've answered all those, we have to ask one more important question:

## To what value do I set each pixel?

Answering this question is the job of the **shading model**.

Also known as:

- ◆ lighting model
- ◆ light reflection model
- ◆ local illumination model
- ◆ reflectance model



## An abundance of photons

Properly determining the right color is *really hard*.

Photons can:

- ◆ interact with the atmosphere, or with things in the atmosphere
- ◆ strike a surface and
  - be absorbed
  - be reflected
  - cause fluorescence or phosphorescence.
- ◆ interact in a wavelength-dependent manner
- ◆ generally bounce around and around, ad nauseum

## Our problem

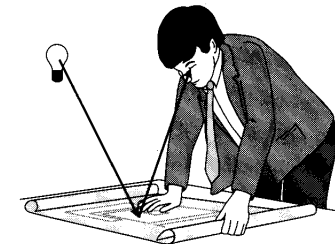
We're going to build up to an *approximation* of reality called the **Phong illumination model**.

It has the following characteristics:

- ◆ *not* physically based
- ◆ gives a first-order *approximation* to physical light reflection
- ◆ very fast
- ◆ widely used

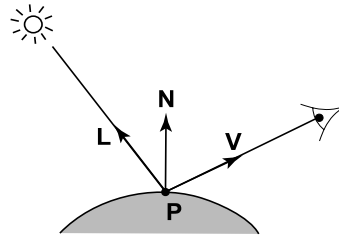
## Assumptions

**local illumination**



No interreflections, no shadows.

## Setup...



Given:

- ♦ a point  $\mathbf{P}$  on a surface visible through pixel  $p$
- ♦ The normal  $\mathbf{N}$  at  $\mathbf{P}$
- ♦ The lighting direction,  $\mathbf{L}$ , and intensity,  $I_\ell$ , at  $\mathbf{P}$
- ♦ The viewing direction,  $\mathbf{V}$ , at  $\mathbf{P}$
- ♦ The shading coefficients at  $\mathbf{P}$

Compute the color,  $I$ , of pixel  $p$ .

Assume that the direction vectors are normalized:  $\|\mathbf{N}\| = \|\mathbf{L}\| = \|\mathbf{V}\| = 1$

## Emissivity

Assign each polygon a single color:

$$I = k_e$$

where

- ♦  $I$  is the resulting intensity
- ♦  $k_e$  is the intrinsic shade associated with the object

This has some special-purpose uses, but not really good for drawing a scene.

Often used to add color to a surface by circumventing the shading computation.

## Ambient reflection

Let's make the color at least dependent on the overall quantity of light available in the scene:

$$I = k_a I_a$$

Where

- ♦  $k_a$  is the **ambient reflection coefficient**.
  - really the reflectance of ambient light
  - “ambient” light is assumed to be equal in all directions
- ♦  $I_a$  is the **ambient intensity**.

Physically, what is “ambient” light?

## Wavelength dependence

Really,  $k_a$  and  $I_a$  are functions over all wavelengths  $\lambda$ .

Ideally, we would do the calculation on these functions:

$$I(\lambda) = k_a(\lambda) I_a(\lambda)$$

then we would find good RGB values to represent the spectrum  $I_a(\lambda)$ .

Traditionally, though,  $k_a$  and  $I_a$  are represented as RGB triples, and the computation is performed on each color channel separately.

## Diffuse reflection

Let's examine the ambient shading model:

- ♦ objects have different colors
- ♦ we can control the overall light intensity
  - what happens when we turn off the lights?
  - what happens as the light intensity increases?
  - what happens if we change the color of the lights?

So far, objects are uniformly lit.

- ♦ not the way things really appear
- ♦ in reality, light sources are directional

Diffuse, or **Lambertian** reflection will allow reflected intensity to vary with the direction of the light.

## Diffuse reflectors

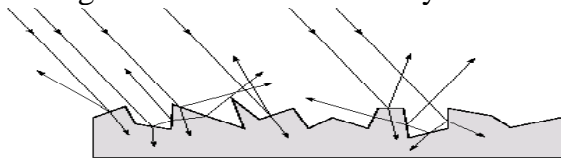
Diffuse reflection occurs from dull, matte surfaces, like latex paint, or chalk.

These **diffuse** or **Lambertian** reflectors reradiate light equally in all directions.

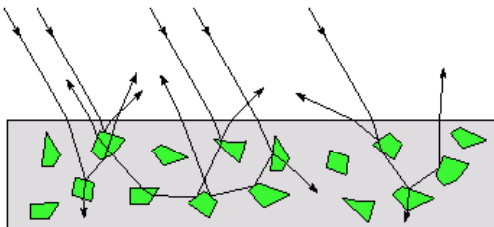


## Diffuse reflectors, cont'd

Picture a rough surface with lots of tiny **microfacets**:



Or a surface with embedded pigment particles:

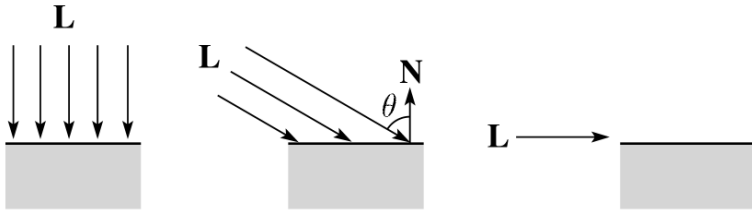


- ♦ Light may actually penetrate the surface, bounce around, and then reflect back out.
- ♦ Accounts for colorization of diffusely reflected light by plastics.

**Q:** Why is the North Pole cold? Why is winter cold?

## Diffuse reflectors

The reflected intensity from a diffuse surface does not depend on the direction of the viewer. The incoming light, though, does depend on the direction of the light source.



## Diffuse reflectors coefficients

The incoming energy is proportional to  $\cos \theta$ , giving the diffuse reflection equations:

$$I = k_e + k_a I_a + k_d I_l \cos \theta$$

$$= k_e + k_a I_a + k_d I_l (\mathbf{N} \cdot \mathbf{L})_+$$

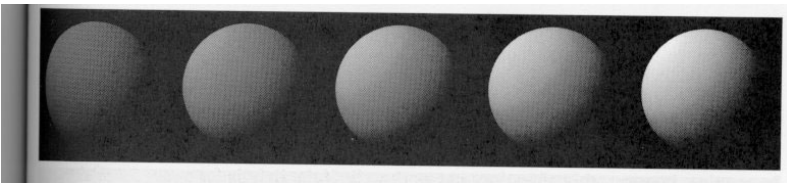
where:

- ♦  $k_d$  is the **diffuse reflection coefficient**
- ♦  $I_l$  is the intensity of the light source
- ♦  $\mathbf{N}$  is the normal to the surface (unit vector)
- ♦  $\mathbf{L}$  is the direction to the light source (unit vector)
- ♦  $(x)_+$  means  $\max \{0, x\}$

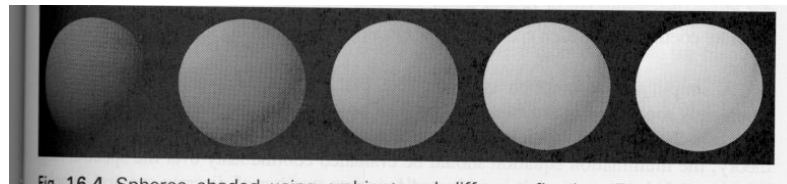
OpenGL supports different kinds of lights: point, directional, and spot. How do these work?

## Ambient and Diffuse Examples

Increasing the diffuse coefficient:



Increasing the ambient term while keeping the diffuse term constant:



## Intensity drop-off with distance

The laws of physics state that the intensity of a point light source must drop off with its distance squared.

We can incorporate this effect by multiplying  $I_l$  by  $1/d^2$ .

Sometimes, this distance-squared dropoff is considered too “harsh.” Angel suggests using

$$f(d) = \frac{1}{a + bd + cd^2}$$

with user-supplied constants for  $a$ ,  $b$ , and  $c$ .

$$f(d) = \min \left( 1, \frac{1}{a + bd + cd^2} \right)$$

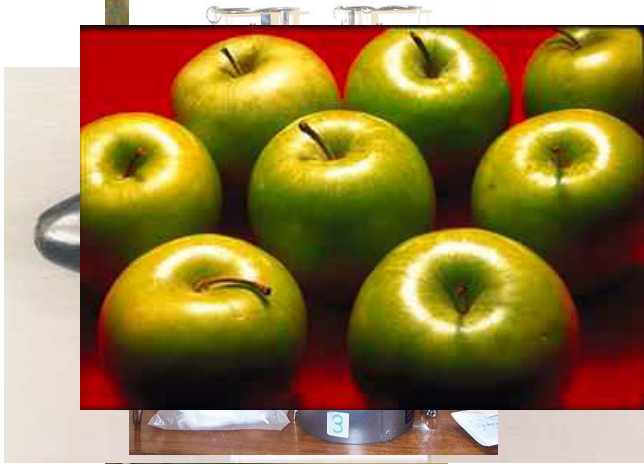
Fig. 16.4. Spheres shaded using ambient and diffuse reflection.

## Specular reflection

**Specular reflection** accounts for the highlight that you see on some objects.

It is particularly important for *smooth, shiny* surfaces, such as:

- ♦ metal
- ♦ polished stone
- ♦ plastics
- ♦ QFC apples

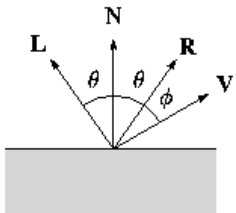


## Specular reflection properties

- Depends on the viewing direction  $\mathbf{V}$
- The color is often determined solely by the color of the light.
- Corresponds to absence of internal reflections

## Specular reflection derivation

For a perfect mirror reflector, light is reflected about  $\mathbf{N}$ , so



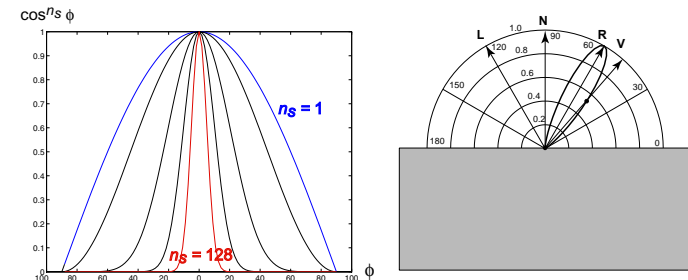
$$I = \begin{cases} I_l & \text{if } \mathbf{V} = \mathbf{R} \\ 0 & \text{otherwise} \end{cases}$$

For a near-perfect reflector, you might expect the highlight to fall off quickly with increasing angle  $\phi$ .

Also known as:

- ♦ “rough specular” reflection
- ♦ “directional diffuse” reflection
- ♦ “glossy” reflection

## Derivation, cont.



One way to get this effect is to take  $(\mathbf{R} \cdot \mathbf{V})$ , raised to a power  $n_s$ .

As  $n_s$  gets larger,

- ♦ the dropoff becomes {more,less} gradual
- ♦ gives a {larger,smaller} highlight
- ♦ simulates a {more,less} glossy surface

## Putting it all together

Since light is additive, we can handle multiple lights by taking the sum over every light.

Our equation is now:

$$I = k_e + k_a I_a + \sum_i f(d_i) I_{li} \left[ k_d (\mathbf{N} \cdot \mathbf{L}_i)_+ + k_s (\mathbf{V} \cdot \mathbf{R})_+^{n_s} \right]$$

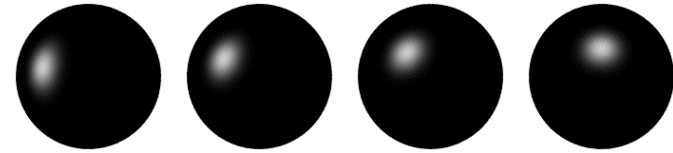
This is the Phong illumination model.

Which quantities are spatial vectors?

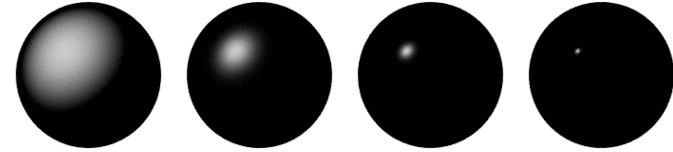
Which are RGB triples?

Which are scalars?

## Specular Example



Moving the light source



Changing  $n_s$

## Choosing the parameters

How would I model...

- ♦ polished copper?
  
- ♦ blue plastic?
  
- ♦ lunar dust?

## Choosing the Parameters

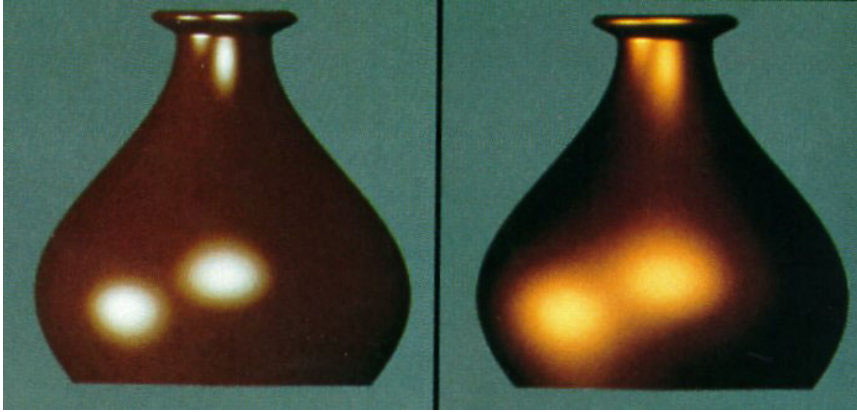
$n_s$  in the range [0,100]

Try  $k_a + k_d + k_s \leq 1$

Use a small  $k_a$  (~0.1)

	$n_s$	$k_d$	$k_s$
Metal	Large	Small, color of metal	Large, color of metal
Plastic	Medium	Medium, color of plastic	Medium, white
Planet	0	Varying	0

## Choosing the parameters



## Image of Jupiter



## Blinn-Phong Model

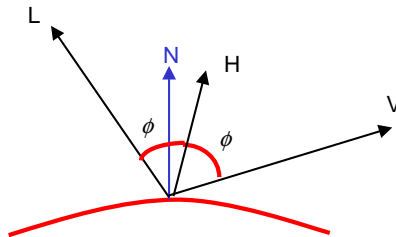
Popular variation of Phong model.

Uses the *halfway vector*,  $H$ .

$$I_s = k_s I_{incident} (N \cdot H)^n.$$

- $H = (L + V) / |L + V|$

What are the advantages?



## Blinn-Phong Model

Popular variation of Phong model.

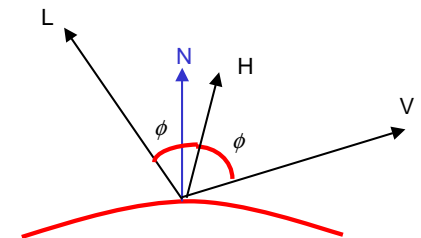
Uses the *halfway vector*,  $H$ .

$$I_s = k_s I_{incident} (N \cdot H)^n.$$

- $H = (L + V) / |L + V|$

Faster to compute than reflection vector.

Still view-dependent since  $H$  depends on  $V$ .



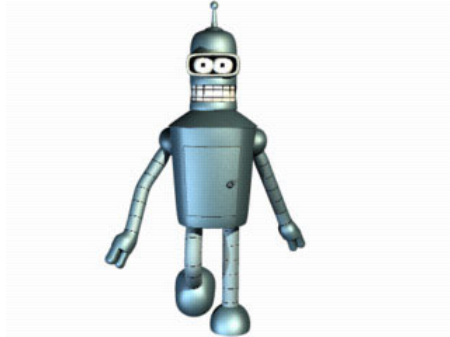
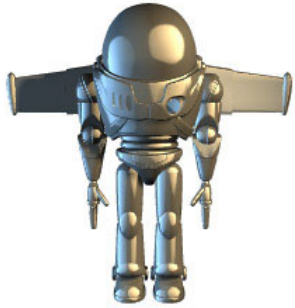


## Blinn-Phong Highlights

Does using  $N \cdot H$  vs.  $R \cdot V$  affect highlights?

- ◆ Yes, the highlights “spread”.
- ◆ Why?

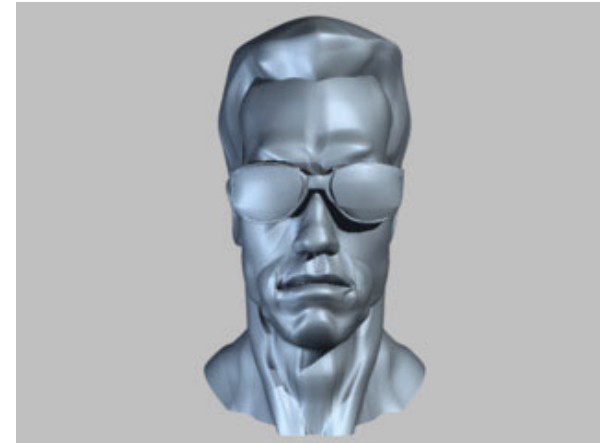
Is this bad?



## Torrance-Sparrow Model

Attempts to provide a more physical model for specular reflections from real surfaces.

- ◆ Points out that intensity of specular highlights is dependent on the incident direction relative to normal.

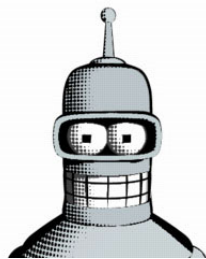


## Many other shading models

*Ward*

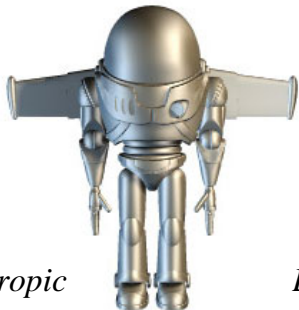


*Velvet*

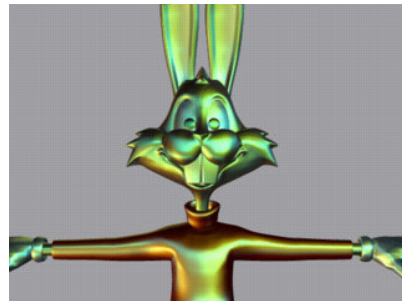


*Comic*

*Anisotropic*



*Layered*



## Gouraud vs. Phong Interpolation

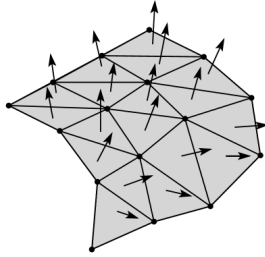
Smooth surfaces are often approximated by polygonal facets because:

- ◆ Graphic hardware generally wants polygons
- ◆ We know how to intersect rays with polygons

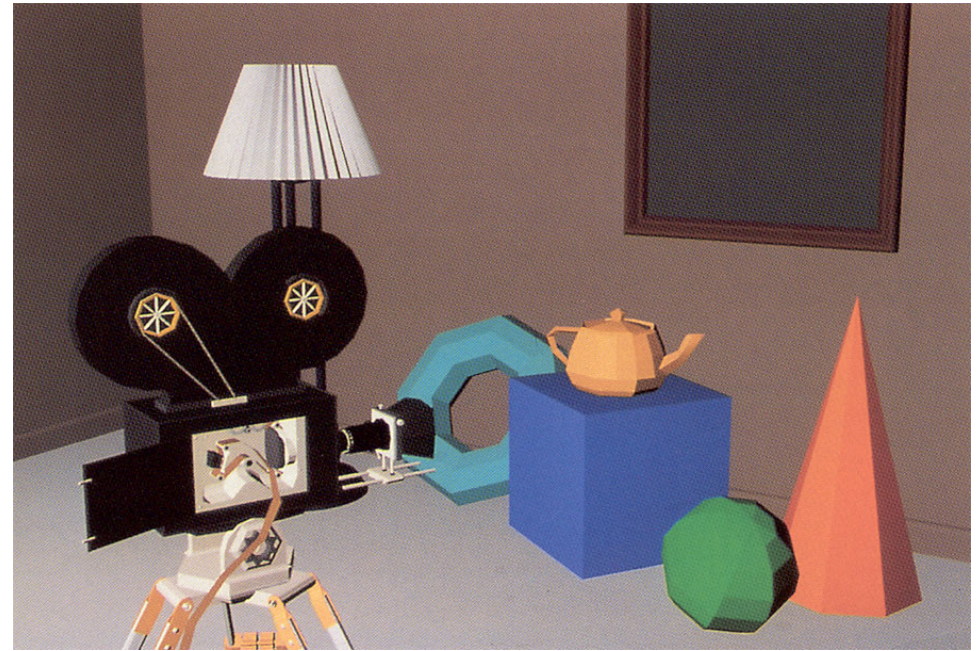
How do we compute the shading for such a surface?

## Faceted shading

Assume each face has constant normal

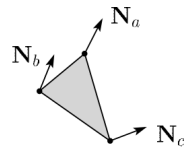
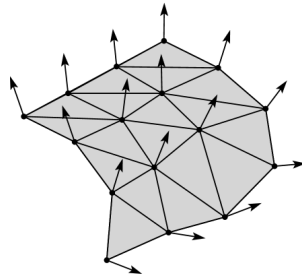


Result: faceted, non non-smooth, appearance

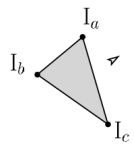


## Gouraud interpolation

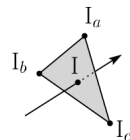
1. Compute normals at vertices
2. Shade only vertices
3. Interpolate the resulting vertex colors



Shade

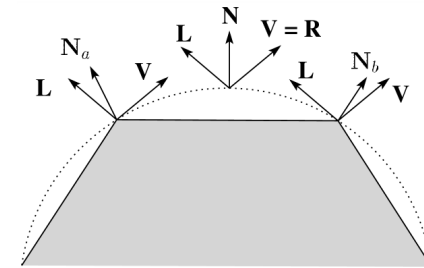


Interpolate

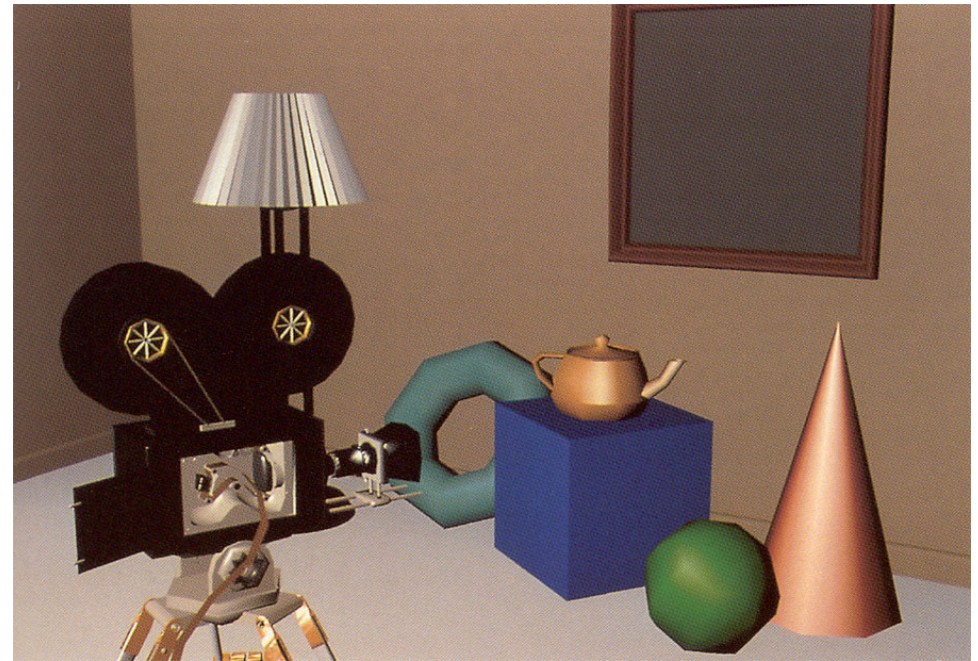
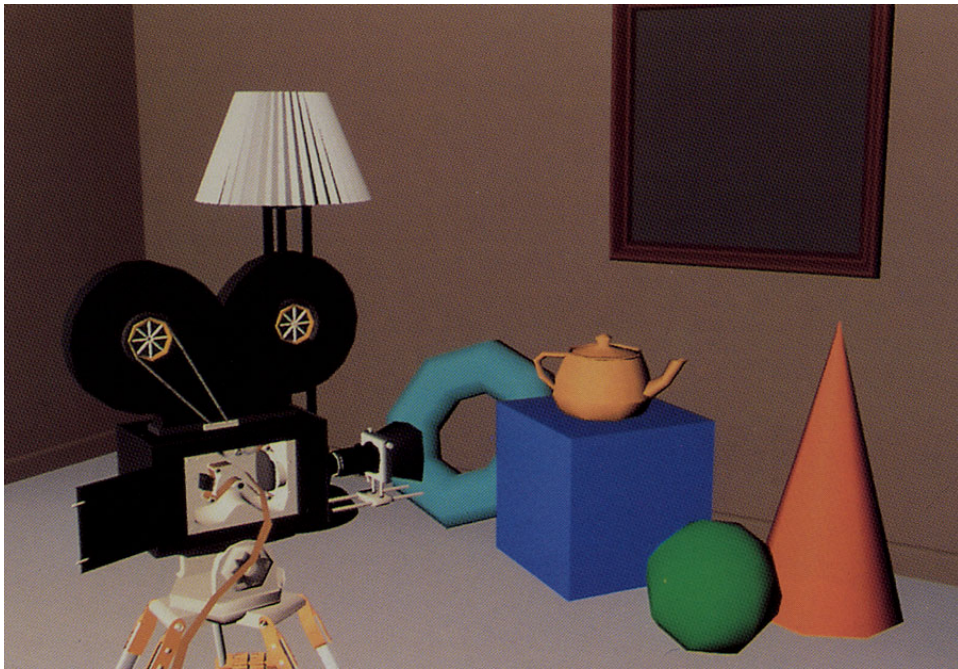


## Gouraud interpolation problems

If the polygonal approximation is too coarse we can miss specular highlights

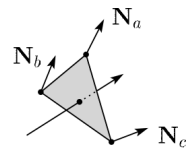
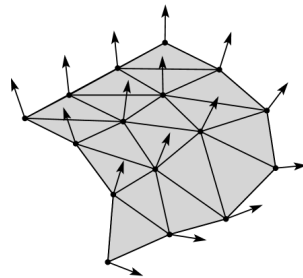


We will encounter Mach banding

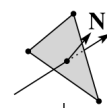


## Phong interpolation

1. Compute normals at the vertices
2. Interpolate normals and normalize
3. Shade using the interpolated normals



Interpolate



Shade

