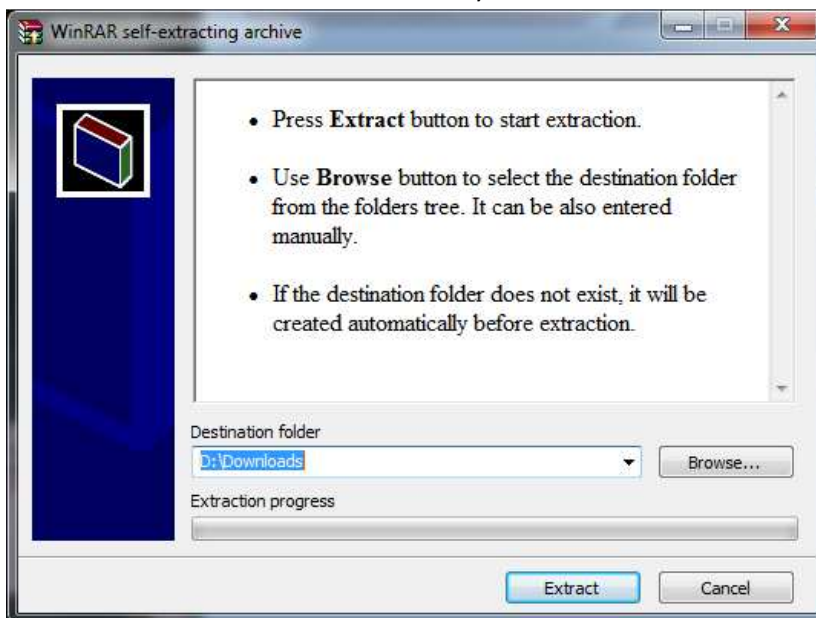


Mayhem Task Instructions

As discussed and approved in class we have chosen to upload an executable file containing a working version of Mayhem rather than a web based version that would have no functionality. The one caveat that comes with this approach is that the demo must be run on a Windows machine as it is built using the .NET framework which is not supported on Linux-based operating systems.

Steps for Setup

- 1) Download the executable file from the Interactive Prototype page.
- 2) Run the executable and select a directory to extract the files to.



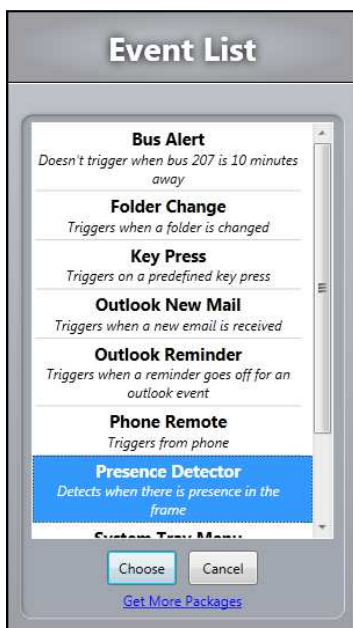
- a. Note we chose to use a self-extracting archive since some browsers modified files in a regular zip as they were downloading, causing the program to crash.
- 3) Navigate to the directory you extracted the archived files to and run "Mayhem.exe" to launch the application.

Task 1:

As with all of the tasks, you can start at any point during the execution of the program so long as you navigate to the main screen shown below when there are no events or reactions currently selected. If you find yourself in a state other than this, please either complete the task or restart the application using step three of "Steps for Setup" before you proceed.



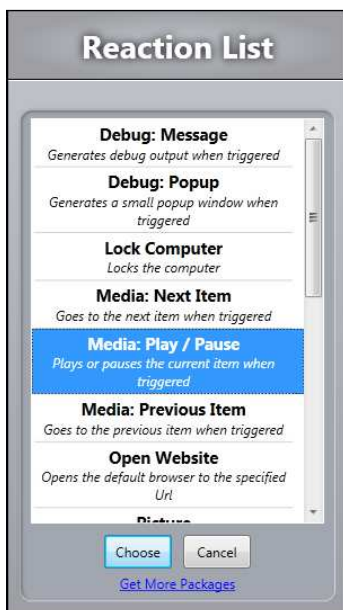
- 1) Select the red-grey “Choose Event” button near the top of the window.
- 2) Navigate down and select “Presence Detector” from the scrolling list in the popover “Event List” window.



- 3) Click the “Choose” button near the bottom of the popover “Event List” window.
- 4) In the “Presence Detector” popover select any region in the box near the top, scroll to any sensitivity on the scroll bar, and select any attached camera (or nothing if there are no cameras attached) in the dropdown menu.
- 5) Click the “Save” button near the bottom of the “Presence Detector” popover.
 - a. If no camera is selected in the dropdown menu you will receive three errors when you return to the main window. These can be ignored as it is a workaround to allow for the completion of the task even if no camera is attached to your computer.



- b. The presence detector implementation is not very reliable, so while this task can still be completed the actual implemented functionality may not work.
- 6) Select the blue-grey “Choose Reaction” button near the top of the window.
- 7) Navigate down and select “Media: Play/Pause” from the scrolling list in the popover “Reaction List” window.



- 8) Click the “Choose” button near the bottom of the popover “Reaction List” window.
- 9) Select the toggle option currently labeled “OFF” located next to the event/reaction pair in order to turn the connection on
- 10) The connection should now be illuminated in red and blue as well as currently active.
 - a. Again, you will not actually be able to turn the connection on if no camera is connected to your computer, and step nine will not actually cause the state to change. You can ignore any errors at the bottom as they are most likely reporting that there is still no camera attached.

Task 2:

- 1) Select the red-grey “Choose Event” button near the top of the window.
- 2) Navigate down and select “Bus Alert” from the scrolling list in the popover “Event List” window.
- 3) Click the “Choose” button near the bottom of the popover “Event List” window.
- 4) In the “Bus Alert” popover select the option labeled “207 – SandPoint” from the provided list.



- 5) Click the “Save” button near the bottom of the “Bus Alert” popover.
 - a. No matter which selection you actually pick, the implementation will default to 207 to make the task easier to complete.
 - b. Currently the “One Bus Away” event plugin has not been fully implemented so we have provided this mockup instead to demonstrate how it might work. As such, the completed connection will not actually be functional.
- 6) Select the blue-grey “Choose Reaction” button near the top of the window.
- 7) Navigate down and select “Debug: Popup” from the scrolling list in the popover “Reaction List” window.
- 8) Click the “Choose” button near the bottom of the popover “Reaction List” window.
- 9) Select the toggle option currently labeled “OFF” located next to the event/reaction pair in order to turn the connection on.
- 10) The connection should now be illuminated in red and blue as well as currently active.



Task 3:

- 1) Select the red-grey "Choose Event" button near the top of the window.
- 2) Navigate down and select "Phone Remote" from the scrolling list in the popover "Event List" window.
- 3) Click the "Choose" button near the bottom of the popover "Event List" window.
- 4) In the "Phone Remote" hover over the button labeled "Button" in the center of the black screen and surrounded by a pulsing white border.
- 5) Click on the button that reads "Text" that appears next to the button.
- 6) Highlight the text reading "Button" and type "Previous Slide".
- 7) Drag the Button now labeled "Previous Slide" to the top left of the black box.



- 8) Click on the "Pair with your phone" button on the right side of the window.
 - a. At this point you may be asked for permission to gather network details from your home network to allow for a paired phone to interact with Mayhem. Please click through the popover and select "Yes" on the Windows popover if this is the case.
- 9) If you have a phone with the Mayhem phone remote app installed pair the device now, otherwise ignore this step.



- 10) Click the “OK” button near the bottom of the “Pair With Phone” popover window
- 11) Click the “Save” button near the bottom of the “Phone Remote” popover.
- 12) Select the blue-grey “Choose Reaction” button near the top of the window.
- 13) Navigate down and select “PowerPoint: Last Slide” from the scrolling list in the popover “Reaction List” window.
- 14) Click the “Choose” button near the bottom of the popover “Reaction List” window.
- 15) Open up an instance of PowerPoint.
 - a. Note this is not a required step, but without it you will be unable to actually turn on the connection
- 16) Select the toggle option currently labeled “OFF” located next to the event/reaction pair in order to turn the connection on.



- 17) The connection should now be illuminated in red and blue as well as currently active.
- 18) Select the red-grey “Choose Event” button near the top of the window.
- 19) Navigate down and select “Phone Remote” from the scrolling list in the popover “Event List” window.
- 20) Click the “Choose” button near the bottom of the popover “Event List” window.
- 21) In the “Phone Remote” hover over the button labeled “Button” in the center of the black screen and surrounded by a pulsing white border.
- 22) Click on the button that reads “Text” that appears next to the button.
- 23) Highlight the text reading “Button” and type “Next Slide”.



- 24) Drag the Button now labeled "Next Slide" to the top right of the black box.
- 25) Click the "Save" button near the bottom of the "Phone Remote" popover.
- 26) Select the blue-grey "Choose Reaction" button near the top of the window.
- 27) Navigate down and select "PowerPoint: Next Slide" from the scrolling list in the popover "Reaction List" window.
- 28) Click the "Choose" button near the bottom of the popover "Reaction List" window.
- 29) Select the toggle option currently labeled "OFF" located next to reaction pair in order to turn the connection on.
 - a. Again, this step will not be possible if there is not an open instance of PowerPoint.
- 30) The connection should now be illuminated in red and blue as well as currently active.

