



## Lab AA on Tuesday

- For those of you in Lab AA, Stuti had to wait well over an hour for a bus and got here too late for her lab.
  - \* In future she will
    - leave home earlier on snowy days
    - contact us asap to give us a chance to find a substitute
    - contact Student Services to put a sign on the door
    - send an email to the listserv



## Lab AA on Wednesday

- So everyone in Lab AA will have two more days to complete Labs 2 and 3, and Homework 2.
  - \* See Catalyst Collect-It for due dates



# Announcements

- Inclement weather
  - \* Policy:
    - Safety First! No faculty, staff, or student should attempt to travel to campus if you believe it would be unsafe to do so because of snow, sleet, or ice.
  - \* Classes are rarely suspended
  - \* Announcements on UW main page
  - \* Call (206) UWS-INFO (897-4636) or 1 888 897-4636



## HW 2 Change

- Change in how HW2 will be turned in
  - \* Create a Word document with
    - Name
    - Student ID
    - Lab Section
    - The URL for your hw2 directory
  - \* Upload only the Word doc to Catalyst
  - \* For more info see the latest version of HW2



# Another Change

- Uploading to Catalyst Collect-It
  - \* Manually added students for each section. . .
    - Because class lists for sections not hooked up with TAs yet
  - \* Links changed for Stuti's and Keith's sections
  - \* Find link for your lab section at top of Calendar page
  - \* Use same link all quarter



# Announcements

- **CLASS RULES**

- \* Lecture ends at 1:20pm!
- \* I expect quiet until class is over as a
  - Courtesy to me and a
  - Courtesy to your fellow students
- \* This means that *no one*
  - picks up their backpack or puts their notebook away until 1:20pm
  - leaves until after the lights are turned back up at 1:20pm



# Announcements

- Due by today
  - \* Chapters 1-4 in *Fluency*
- For Friday
  - \* Read Chapter 5



# Announcements

- Quiz

- \* Thursday/Friday online in lab
- \* Bring a photo ID such as Husky ID or Driver's License
- \* Chapters 1-3 of *Fluency*
- \* 10 Multiple-choice or true-or-false questions
- \* When I wrote the quiz, I added feedback so you will find out immediately
  - Why one answer is correct and not the others and
  - What score you received





# Announcements

- Catalyst Turn-In Areas
  - \* Finally ready
  - \* Had to manually add students for each section
    - Class lists for sections not hooked up with TAs yet
  - \* Go to the links at the top of the course calendar
    - Demonstration



# More About Networks

- Campus Area Network (CAN)
  - \* Examples
    - Microsoft – Redmond, WA
    - Cisco Systems – San Jose, CA
    - Any Boeing Plant – Renton, Kent, Auburn, Everett
    - Typical High School or College campus
  - \* Buildings in close proximity
  - \* Wired ethernet cable connects buildings
  - \* One-time capital cost



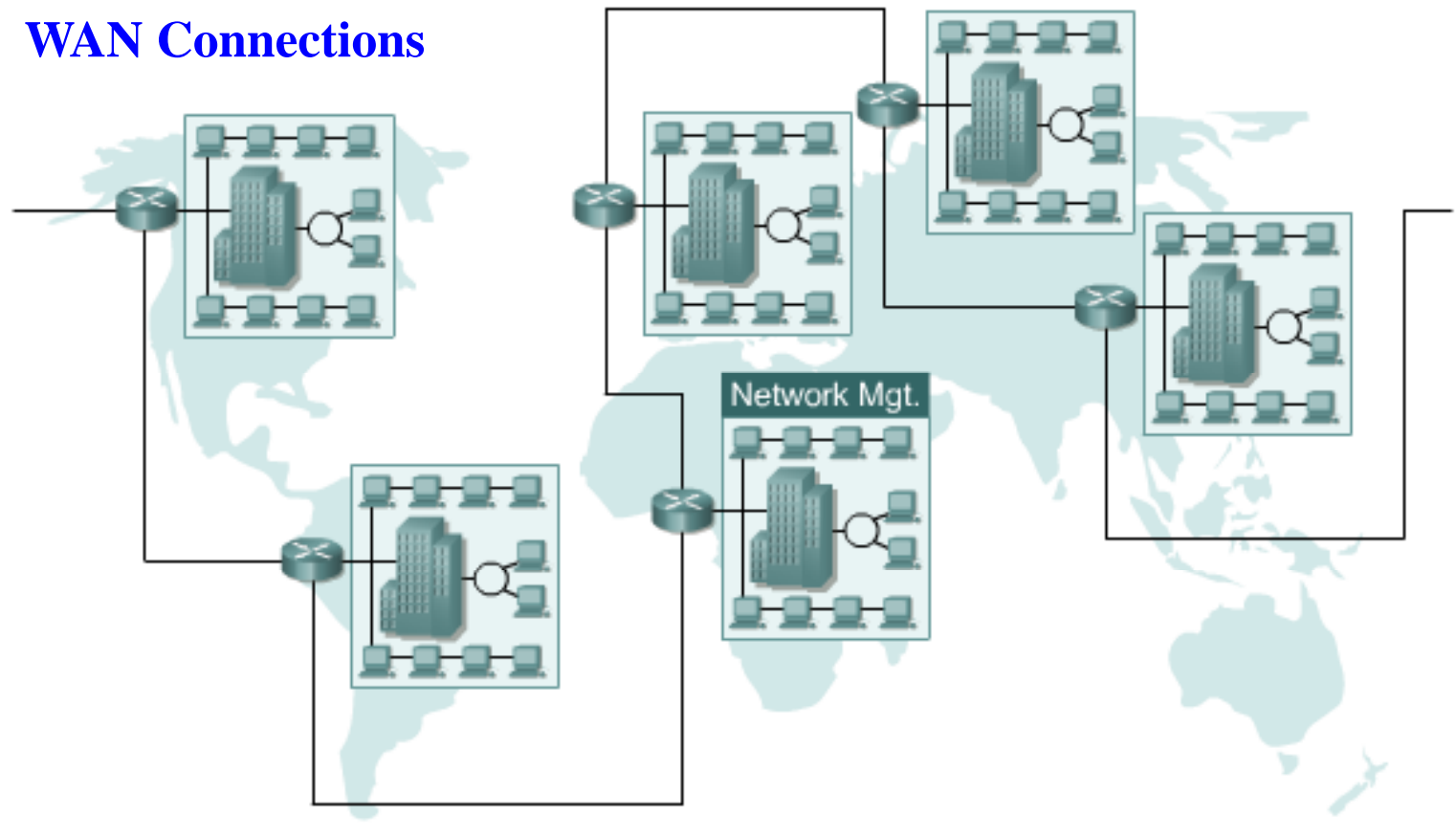
# More About Networks

- Metropolitan Area Network (MAN)
  - \* Examples
    - Boeing Puget Sound Facilities (10+ campuses)
    - Typical School District with multiple campuses
  - \* Multiple buildings in close proximity
  - \* Third-party service between buildings
  - \* Monthly expense for connectivity



# Global Businesses

## WAN Connections



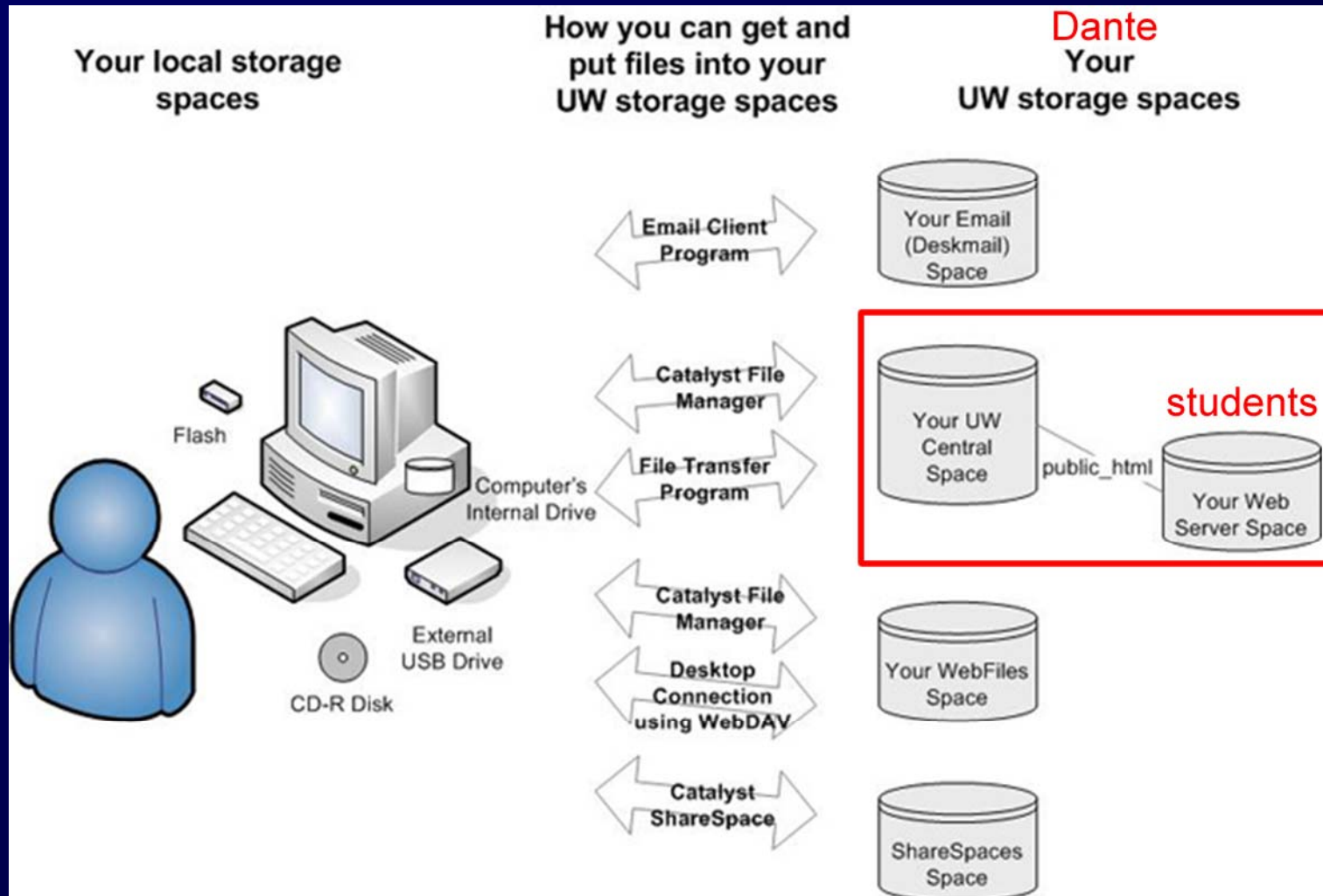


## A Bit More on Web Servers

- Web servers
  - \* serve Web pages
  - \* store Web pages
- When a browser requests a Web page, the server responds by sending the page
  - \* The browser on the local computer is the client
  - \* Server is also called the host for the Web site



# Your UW Storage Space





# Your Web Files

homer-sftp (profile) - SSH Tectia File Transfer

File Edit View Operation Window Help

Quick Connect Profiles

Local Name Size Type Mod Remote Name Size Type

Local Name	Size	Type	Mod	Remote Name	Size	Type
checkout		System F...	9/29	_REFERENCE		Folder
Public		System F...	11/2	IMT501		Folder
Computer		System F...		INFO100		Folder
Network		System F...		ITA 341A 2006		Folder
Internet Explorer		System F...		ITA341_2007		Folder
Control Panel		System F...		LIS542		Folder
Recycle Bin		System F...		LIS545		Folder
.htaccess	61	HTACCE...	10/1	mysql		Folder
ACTION.xlsx	11,076	Microsof...	9/30	mysql-standard-5.0.27-lin...		Folder
				public_html		Folder
				public_media		Folder
				student.html		Folder



## Web servers

- Your Dante account is private
- Public or Web pages
  - \* Public\_html
  - \* Shortcut or link to the Vergil server (Students)
  - \* Shortcut is in your Dante account
- <http://students.washington.edu/yourUWNetID/fit100/>





# Hypertext Markup Language

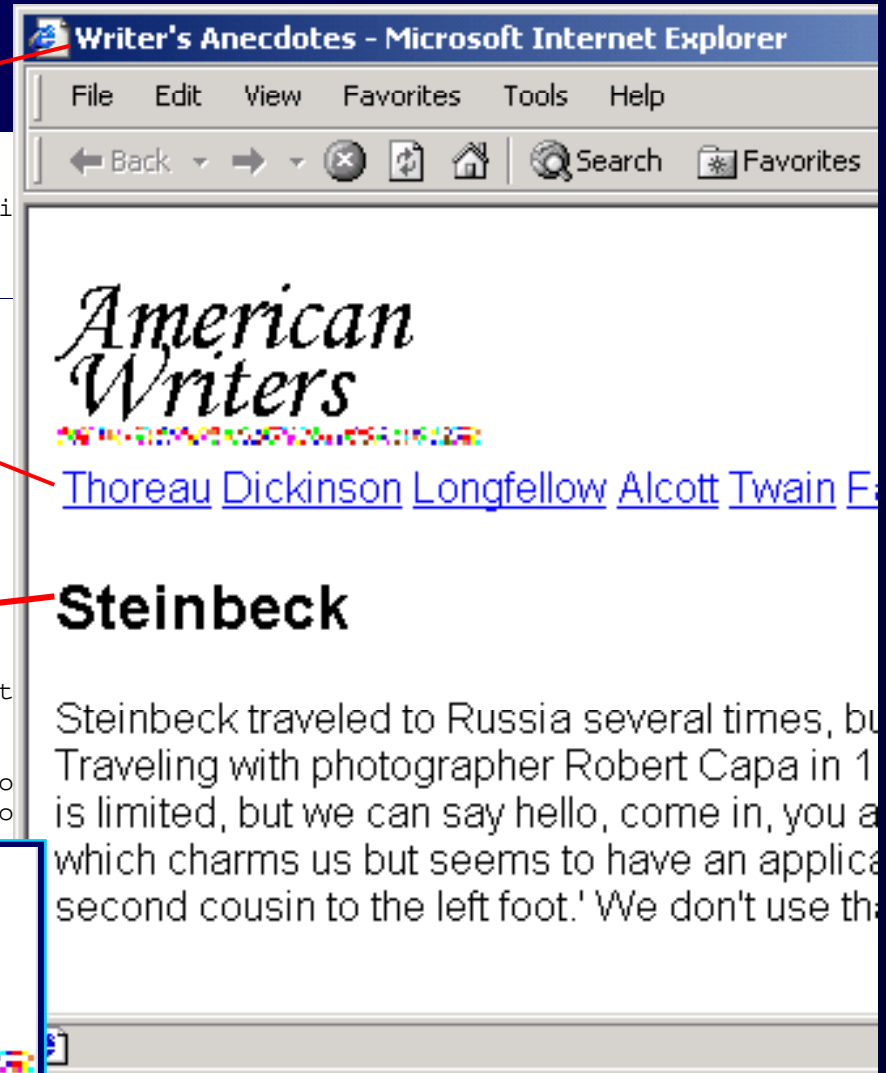
*HTML is the language of Web pages*



# Web Pages in HTML

```
<html>
<head><title>Writer's Anecdotes</title></head>
<body bgcolor="white" text="black"><font face="Helveti

<table>
<tr>
<td><a href="hdt.html">Thoreau</a></td>
<td><a href="ed.html">Dickinson</a></td>
<td><a href="hwf.html">Longfellow</a></td>
<td><a href="lnc.html">Alcott</a></td>
<td><a href="sc.html">Twain</a></td>
<td><a href="wf.html">Faulkner</a></td>
<td><a href="rf.html">Frost</a></td>
<td><a href="eh.html">Hemingway</a></td>
<td><a href="js.html">Steinbeck</a></td>
</tr>
</table>
<h2>Steinbeck</h2>
<p>Steinbeck traveled to Russia several times, but
never mastered the language. Traveling with
photographer Robert Capa in 1947 he wrote, "...I
admit our Russian is limited, but we can say hello
come in, you are beautiful, ohno you don't, and o
which charms us but
rarely needed, 'The
left foot.' We don't
</body>
</html>
```





# HTML Structure

All HTML files use the same structure:

```
<html>  
  <head>  
    <title>Name of Page Goes Here  
  </title>  
    Heading content goes here  
  </head>  
  <body>  
    Body content goes here  
  </body>  
</html>
```

Web page  
content goes  
in the body

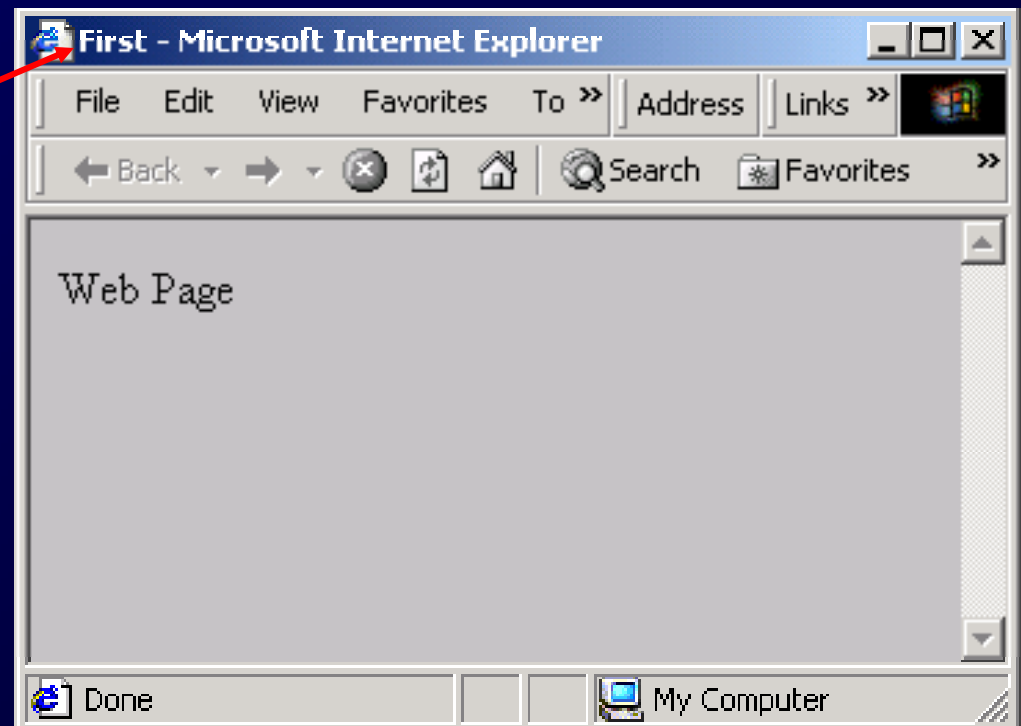


# First HTML Web Page

This HTML produces this result

```
<html>
  <head>
    <title>First
  </title>
  </head>
  <body>
    Web Page
  </body>
</html>
```

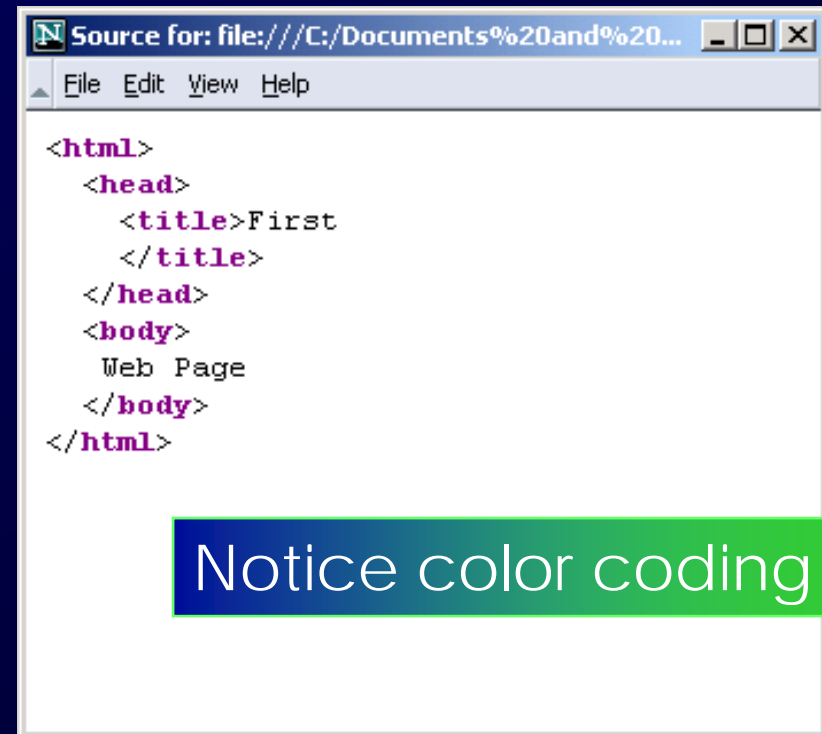
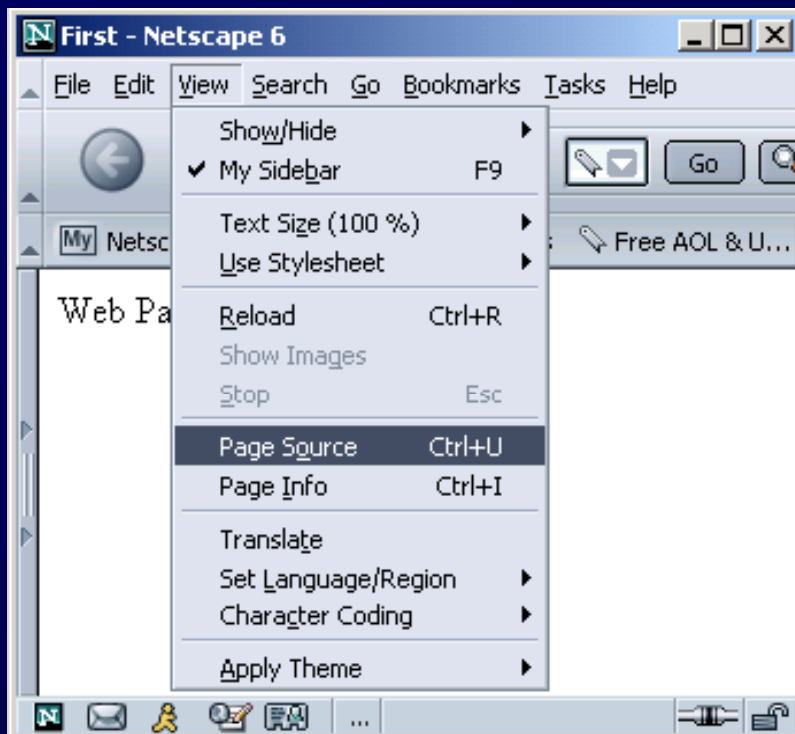
*Content*





# The Source

The HTML code producing a page is the *source...which can always be viewed*



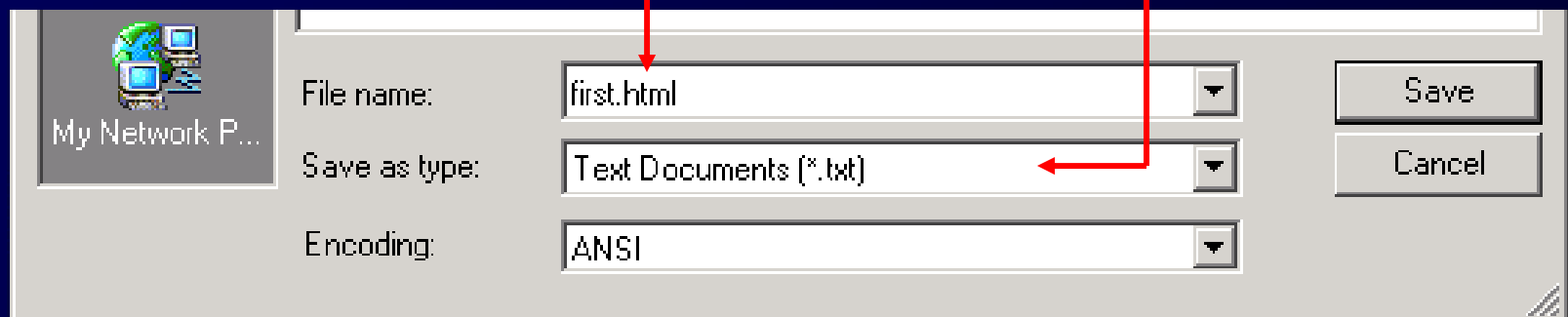


# HTML Must Be Text

Word processors (recall Chap. 2) insert formatting tags, confusing browsers

- Create source in NotePad, etc.
- Save in **Text** or **txt** format
- Save with file extension **.html**

Avoid  
Confusion





# Illustrate the Process



# Illustrate the Process

```
<html>
  <head><title>Party Time</title>
  </head>
  <body bgcolor="white">
    <h2>I'm thinking ...</h2>
    <h1> I need downhill skiing!!! </h1>
  </body>
</html>
```





## Add An Image

Images are encoded two ways:

GIF -- Graphics Interchange Format -- is for diagrams and simple drawings

JPEG -- Joint Photographic Experts Group -- is for high resolution photos, complex art

- The encoding is given in the file extension

• Image tags for placing images

```

```

tag    attribute name (source)    path name to file



## File Structure

The path must say how to reach the file

- When the file is in the directory as the web page, just give the file name, **ski.jpg**
- If the file is in a subdirectory, say how to navigate to it, **pix/ski.jpg**
- If the file is in a superdirectory, move up using dot-dot notation, **../ski.jpg**

The most common reason that an image is not displayed is the path is wrong ... check!



# Files, Folders, & Paths

- Net Point Video
- Files, Folders, and Paths

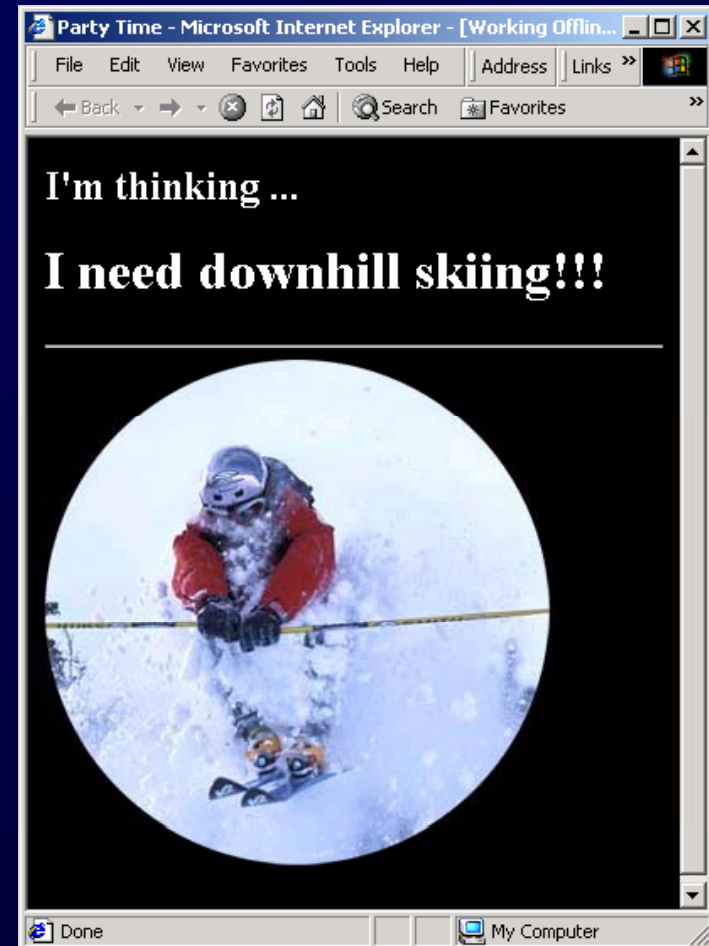


# Illustrate the Process



# Illustrate the Process

```
<html>
  <head><title>Party Time</title>
  </head>
  <body bgcolor="black">
    <font color="white">
      <h2>I'm thinking ...</h2>
      <h1> I need downhill skiing!!! </h1>
      <hr>
      
    </body>
</html>
```





Illustrate



## Illustrate

The file is accessed from the same directory, from a subdirectory and from the containing directory



## Summary

Web pages are written in HTML

- The files must be text
- The file extension must be **.html**

Tags enclose content like parentheses

- Control look with attributes on tags

Use a change-and-test process

Images have two formats and explicit paths

- Either absolute or relative





## Looking Ahead

- Read Chapter 5 for Friday
- Quiz during your Thursday-Friday labs on chapters 1- 3 of *Fluency*
- Next week's pop quiz will cover chapters 3-5 of *Fluency*